



**Baylor at Kansas**

02/05/22 Allen Fieldhouse, Lawrence  
2021-22 Men's Basketball

Game Time: 3:00 PM  
Game Duration: 1:55  
Attendance: 16,300

Officials: Kipp Kissinger, Terry Oglesby, Rick Crawford

**Baylor - 59**

**Record: 19-4 (7-3)**

NO.	Name	F	Min	FG	3P	FT	Rebounds			Fouls		TP	AS	TO	ST	Blocks		+/-
				M-A	M-A	M-A	OR	DR	TOT	PF	FD					BS	BA	
0	Flo Thamba	F	16:47	1-5	0-0	1-4	4	3	7	5	3	3	0	2	0	0	1	-5
2	Kendall Brown	F	33:20	5-12	2-3	0-0	3	5	8	2	1	12	3	1	0	1	1	-28
24	Matthew Mayer	F	17:15	2-9	1-4	2-2	2	2	4	3	3	7	0	1	1	0	1	-15
10	Adam Flagler	G	25:59	6-15	3-8	1-1	1	1	2	2	1	16	1	1	4	0	1	-20
11	James Akinjo	G	24:39	0-11	0-5	0-0	1	0	1	0	0	0	3	3	2	0	1	-19
1	Jeremy Sochan		25:35	2-5	0-2	0-0	2	4	6	3	0	4	1	1	2	0	0	-25
3	Dale Bonner		27:06	2-7	0-3	2-3	0	1	1	0	3	6	1	1	1	0	1	-11
23	Jonathan Tchamwa Tchatchoua		23:13	1-4	0-1	4-4	1	3	4	3	2	6	0	4	1	1	0	-19
32	Zach Loveday		02:48	0-0	0-0	0-0	1	1	2	0	0	0	1	0	0	1	0	8
14	Mitchell Paul		01:39	1-1	0-0	0-0	0	0	0	0	0	2	0	0	1	0	0	7
21	Kijana Love		01:39	1-2	1-1	0-0	0	0	0	0	0	3	0	0	0	0	0	7
Team							2	0	2			0		0				
<b>Totals</b>				21-71	7-27	10-14	17	20	37	19	13	59	10	14	12	3	6	-24

Shooting By Period		
1 <sup>st</sup> FG%	8-31	25.8%
3PT%	2-14	14.3%
FT%	3-6	50%
2 <sup>nd</sup> FG%	13-40	32.5%
3PT%	5-13	38.5%
FT%	7-8	87.5%
GM FG%	21-71	29.6%
3PT%	7-27	25.9%
FT%	10-14	71.4%

Dead Ball Rebounds: 2, 0

Technical Fouls: Coach 2<sup>nd</sup> 17:09

**Kansas - 83**

**Record: 19-3 (8-1)**

NO.	Name	F	Min	FG	3P	FT	Rebounds			Fouls		TP	AS	TO	ST	Blocks		+/-
				M-A	M-A	M-A	OR	DR	TOT	PF	FD					BS	BA	
10	Jalen Wilson	F	29:23	7-10	1-4	0-0	2	5	7	1	2	15	4	1	2	1	0	25
33	David McCormack	F	21:27	1-6	0-0	7-8	4	4	8	2	3	9	1	2	0	1	0	16
2	Christian Braun	G	32:27	8-14	1-3	1-1	2	8	10	3	1	18	3	4	1	0	1	27
3	Dajuan Harris	G	28:38	1-5	0-0	0-0	1	1	2	1	3	2	7	2	3	0	1	31
30	Ochai Agbaji	G	31:36	5-11	2-6	6-7	0	9	9	0	5	18	2	3	0	0	0	22
1	Joseph Yesufu		17:15	1-3	1-3	0-0	0	0	0	1	0	3	0	0	0	0	0	16
44	Mitch Lightfoot		14:34	4-4	0-0	0-2	1	4	5	3	2	8	0	0	0	2	0	16
55	Jalen Coleman-Lands		11:16	4-5	0-1	0-0	1	1	2	1	1	8	1	1	0	0	0	-1
24	KJ Adams, Jr.		03:59	0-0	0-0	0-0	0	0	0	1	0	0	0	0	0	2	0	-8
0	Bobby Pettiford		03:49	1-1	0-0	0-0	0	1	1	0	0	2	0	0	0	0	0	-8
12	Chris Teahan		02:48	0-2	0-2	0-0	0	1	1	0	1	0	0	1	0	0	1	-8
20	Michael Jankovich		02:48	0-1	0-1	0-0	0	0	0	0	0	0	0	0	0	0	0	-8
Team							0	1	1			0		3				
<b>Totals</b>				32-62	5-20	14-18	11	35	46	13	18	83	18	17	6	6	3	24

Shooting By Period		
1 <sup>st</sup> FG%	17-37	45.9%
3PT%	3-11	27.3%
FT%	2-2	100%
2 <sup>nd</sup> FG%	15-25	60.0%
3PT%	2-9	22.2%
FT%	12-16	75%
GM FG%	32-62	51.6%
3PT%	5-20	25.0%
FT%	14-18	77.8%

Dead Ball Rebounds: 3, 0

Technical Fouls: NONE

	BU	KU
Biggest lead	2 (1 <sup>st</sup> 19:31)	34 (2 <sup>nd</sup> 3:37)
Best Scoring Run	8 (2 <sup>nd</sup> 0:05)	12 (1 <sup>st</sup> 15:26)
Lead Changes	1	
Times Tied	1	
Time with Lead	00:57	38:33

Points from	BU	KU
Turnovers	17	20
Paint	26	48
Second Chance	13	20
Fast Breaks	9	17
Bench	21	21

	Period by Period Scoring		
	1st	2nd	TOT
BU	21	38	59
KU	39	44	83

Game Notes: BU #0 F. Thamba fouled out with 5:54 remaining in regulation. ♦



**Baylor at Kansas**

02/05/22 Allen Fieldhouse, Lawrence  
2021-22 Men's Basketball

**Game Time:** 3:00 PM  
**Game Duration:** 1:55  
**Attendance:** 16,300

**Officials:** Kipp Kissinger, Terry Oglesby, Rick Crawford

**Period 1**

**Quarter Starters:**

<b>KU</b>	2 Braun C	3 Harris D	10 Wilson J	30 Agbaji O	33 McCormack D
<b>BU</b>	0 Thamba F	2 Brown K	10 Flagler A	11 Akinjo J	24 Mayer M

Game Time	KU	Score	Diff	BU
20:00	33 MCCORMACK D jumpball won			0 THAMBA F jumpball lost
19:38	2 BRAUN C 2pt FG in the paint, layup blocked			
19:38				2 BROWN K block (1)
19:34				2 BROWN K defensive rebound (1)
19:31		<b>0-2</b>	<b>-2</b>	2 BROWN K 2pt FG fast break in the paint, layup made (2)
19:09	30 AGBAJI O 3pt FG , jump shot missed			
19:05				10 FLAGLER A defensive rebound (1)
18:41	10 WILSON J steal (1)			11 AKINJO J turnover lost ball (1)
18:34	30 AGBAJI O 2pt FG fast break from turnover in the paint, layup made (2)	<b>2-2</b>	<b>0</b>	
18:34	10 WILSON J assist (1)			
18:33	30 AGBAJI O foul drawn (1)			24 MAYER M foul shooting (1 - 1)
18:33	30 AGBAJI O free throw fast break 1 - 1 made (3)	<b>3-2</b>	<b>1</b>	
18:17				10 FLAGLER A 3pt FG , jump shot missed
18:14	2 BRAUN C defensive rebound (1)			
18:07	3 HARRIS D 2pt FG in the paint, layup missed			
18:04				0 THAMBA F defensive rebound (1)
17:54				11 AKINJO J 3pt FG , jump shot missed
17:51	33 MCCORMACK D defensive rebound (1)			
17:39	33 MCCORMACK D 2pt FG in the paint, hook shot missed			
17:36	33 MCCORMACK D offensive rebound (2)			
17:35	33 MCCORMACK D 2pt FG second chance in the paint, layup missed			
17:31	10 WILSON J offensive rebound (1)			
17:31	10 WILSON J 2pt FG second chance in the paint, layup made (2)	<b>5-2</b>	<b>3</b>	
17:09				24 MAYER M 3pt FG , jump shot missed
17:07	10 WILSON J defensive rebound (2)			
17:02	2 BRAUN C 2pt FG fast break in the paint, layup made (2)	<b>7-2</b>	<b>5</b>	
17:02	30 AGBAJI O assist (1)			
17:00				Timeout 30 Sec
17:00				0 THAMBA F substitution out
17:00				11 AKINJO J substitution out
17:00				24 MAYER M substitution out
17:00				1 SOCHAN J substitution in
17:00				3 BONNER D substitution in
17:00				23 TCHAMWA TCHATCHOUA J substitution in
16:43				10 FLAGLER A 3pt FG , jump shot missed
16:40	33 MCCORMACK D defensive rebound (3)			
16:23	3 HARRIS D turnover bad pass (1)			23 TCHAMWA TCHATCHOUA J steal (1)
16:08	2 BRAUN C steal (1)			3 BONNER D turnover bad pass (1)
16:04	2 BRAUN C 2pt FG fast break from turnover in the paint, dunk, made (4)	<b>9-2</b>	<b>7</b>	
15:44				2 BROWN K 2pt FG in the paint, layup missed



**Baylor at Kansas**

02/05/22 Allen Fieldhouse, Lawrence  
2021-22 Men's Basketball

**Game Time:** 3:00 PM  
**Game Duration:** 1:55  
**Attendance:** 16,300

**Officials:** Kipp Kissinger, Terry Oglesby, Rick Crawford

Game Time	KU	Score	Diff	BU
15:41	33 MCCORMACK D defensive rebound (4)			
15:31	33 MCCORMACK D 2pt FG in the paint, layup missed			
15:29	33 MCCORMACK D offensive rebound (5)			
15:26	30 AGBAJI O 3pt FG second chance, jump shot made (6)	<b>12-2</b>	<b>10</b>	
15:26	33 MCCORMACK D assist (1)			
15:06	Timeout media			
15:06				10 FLAGLER A substitution out
15:06				11 AKINJO J substitution in
14:52				23 TCHAMWA TCHATCHOUA J 2pt FG in the paint, jump shot missed
14:50	10 WILSON J defensive rebound (3)			
14:27	33 MCCORMACK D 2pt FG outside the paint, jump shot missed			
14:24				2 BROWN K defensive rebound (2)
13:59		<b>12-4</b>	<b>8</b>	23 TCHAMWA TCHATCHOUA J 2pt FG in the paint, layup made (2)
13:59				2 BROWN K assist (1)
13:48	3 HARRIS D foul drawn (1)			1 SOCHAN J foul personal (1 - 2)
13:48	30 AGBAJI O substitution out			
13:48	33 MCCORMACK D substitution out			
13:48	1 YESUFU J substitution in			
13:48	44 LIGHTFOOT M substitution in			
13:47	10 WILSON J 2pt FG in the paint, layup made (4)	<b>14-4</b>	<b>10</b>	
13:47	3 HARRIS D assist (1)			
13:21		<b>14-7</b>	<b>7</b>	2 BROWN K 3pt FG , jump shot made (5)
13:21				11 AKINJO J assist (1)
12:57	1 YESUFU J 3pt FG , jump shot made (3)	<b>17-7</b>	<b>10</b>	
12:57	3 HARRIS D assist (2)			
12:29				3 BONNER D 3pt FG , jump shot missed
12:24	44 LIGHTFOOT M defensive rebound (1)			
12:21	10 WILSON J 2pt FG fast break in the paint, layup made (6)	<b>19-7</b>	<b>12</b>	
12:21	3 HARRIS D assist (3)			
12:02				11 AKINJO J 2pt FG outside the paint, jump shot missed
11:59	44 LIGHTFOOT M defensive rebound (2)			
11:48	2 BRAUN C 2pt FG in the paint, layup missed			
11:45	44 LIGHTFOOT M offensive rebound (3)			
11:45	44 LIGHTFOOT M 2pt FG second chance in the paint, layup made (2)	<b>21-7</b>	<b>14</b>	
11:16				3 BONNER D 2pt FG outside the paint, pull up jump shot missed
11:14	2 BRAUN C defensive rebound (2)			
11:08	2 BRAUN C 3pt FG , jump shot missed			
11:05				2 BROWN K defensive rebound (3)
11:00	10 WILSON J steal (2)			23 TCHAMWA TCHATCHOUA J turnover lost ball (1)
10:55	2 BRAUN C 2pt FG fast break from turnover in the paint, layup made (6)	<b>23-7</b>	<b>16</b>	
10:55	10 WILSON J assist (2)			
10:54				Timeout 30 Sec
10:54	Timeout media			
10:54	3 HARRIS D substitution out			
10:54	30 AGBAJI O substitution in			
10:54				1 SOCHAN J substitution out



**Baylor at Kansas**

02/05/22 Allen Fieldhouse, Lawrence  
2021-22 Men's Basketball

**Game Time:** 3:00 PM  
**Game Duration:** 1:55  
**Attendance:** 16,300

**Officials:** Kipp Kissinger, Terry Oglesby, Rick Crawford

Game Time	KU	Score	Diff	BU
10:54				2 BROWN K substitution out
10:54				23 TCHAMWA TCHATCHOUA J substitution out
10:54				0 THAMBA F substitution in
10:54				10 FLAGLER A substitution in
10:54				24 MAYER M substitution in
10:41		<b>23-9</b>	<b>14</b>	24 MAYER M 2pt FG in the paint, jump shot made (2)
10:22	44 LIGHTFOOT M 2pt FG in the paint, jump shot made (4)	<b>25-9</b>	<b>16</b>	
10:22	10 WILSON J assist (3)			
10:01	44 LIGHTFOOT M foul shooting (1 - 1)			0 THAMBA F foul drawn (1)
10:01				0 THAMBA F free throw 1 - 2 missed
10:01				offensive dead ball rebound (1)
10:01		<b>25-10</b>	<b>15</b>	0 THAMBA F free throw 2 - 2 made (1)
09:47	30 AGBAJI O 2pt FG in the paint, jump shot missed			
09:43	10 WILSON J offensive rebound (4)			
09:43	10 WILSON J 2pt FG second chance in the paint, layup made (8)	<b>27-10</b>	<b>17</b>	
09:24				11 AKINJO J 2pt FG outside the paint, jump shot missed
09:21	44 LIGHTFOOT M defensive rebound (4)			
09:17	1 YESUFU J 3pt FG , jump shot missed			
09:14				0 THAMBA F defensive rebound (2)
08:47		<b>27-13</b>	<b>14</b>	24 MAYER M 3pt FG , jump shot made (5)
08:47				10 FLAGLER A assist (1)
08:21	2 BRAUN C foul offensive (1 - 2)			24 MAYER M foul drawn (1)
08:21	2 BRAUN C turnover offensive (1)			
08:21	2 BRAUN C substitution out			
08:21	44 LIGHTFOOT M substitution out			
08:21	3 HARRIS D substitution in			
08:21	33 MCCORMACK D substitution in			
08:21				3 BONNER D substitution out
08:21				2 BROWN K substitution in
08:08				10 FLAGLER A turnover bad pass (1)
07:53	jump ball situation			
07:53	33 MCCORMACK D turnover lost ball (1)			10 FLAGLER A steal (1)
07:53	Timeout media			
07:39				24 MAYER M 2pt FG from turnover in the paint, hook shot missed
07:36				2 BROWN K offensive rebound (4)
07:34				24 MAYER M 3pt FG from turnover second chance, jump shot missed
07:33	10 WILSON J defensive rebound (5)			
07:33	10 WILSON J foul drawn (1)			0 THAMBA F foul personal (1 - 3)
07:33				0 THAMBA F substitution out
07:33				23 TCHAMWA TCHATCHOUA J substitution in
07:07	10 WILSON J foul drawn (2)			23 TCHAMWA TCHATCHOUA J foul personal (1 - 4)
07:04	10 WILSON J 2pt FG in the paint, jump shot made (10)	<b>29-13</b>	<b>16</b>	
07:04	3 HARRIS D assist (4)			
06:50				24 MAYER M 3pt FG , jump shot missed
06:47	30 AGBAJI O defensive rebound (1)			
06:32	33 MCCORMACK D 2pt FG in the paint, layup missed			
06:30				23 TCHAMWA TCHATCHOUA J defensive rebound (1)



**Baylor at Kansas**

02/05/22 Allen Fieldhouse, Lawrence  
2021-22 Men's Basketball

**Game Time:** 3:00 PM  
**Game Duration:** 1:55  
**Attendance:** 16,300

**Officials:** Kipp Kissinger, Terry Oglesby, Rick Crawford

Game Time	KU	Score	Diff	BU
06:24				11 AKINJO J 2pt FG in the paint, layup missed
06:22	30 AGBAJI O defensive rebound (2)			
06:17	10 WILSON J 3pt FG , jump shot missed			
06:13				23 TCHAMWA TCHATCHOA J defensive rebound (2)
06:06				11 AKINJO J 3pt FG , jump shot missed
06:03				23 TCHAMWA TCHATCHOA J offensive rebound (3)
06:03	10 WILSON J foul shooting (1 - 3)			23 TCHAMWA TCHATCHOA J foul drawn (1)
06:03		<b>29-14</b>	<b>15</b>	23 TCHAMWA TCHATCHOA J free throw 1 - 2 made (3)
06:03	10 WILSON J substitution out			
06:03	33 MCCORMACK D substitution out			
06:03	2 BRAUN C substitution in			
06:03	44 LIGHTFOOT M substitution in			
06:03				11 AKINJO J substitution out
06:03				24 MAYER M substitution out
06:03				1 SOCHAN J substitution in
06:03				3 BONNER D substitution in
06:03		<b>29-15</b>	<b>14</b>	23 TCHAMWA TCHATCHOA J free throw 2 - 2 made (4)
05:41	3 HARRIS D 2pt FG in the paint, floating jump shot missed			
05:38	3 HARRIS D offensive rebound (1)			
05:37	2 BRAUN C 3pt FG second chance, jump shot made (9)	<b>32-15</b>	<b>17</b>	
05:37	3 HARRIS D assist (5)			
05:14				10 FLAGLER A 2pt FG in the paint, layup blocked
05:14	44 LIGHTFOOT M block (1)			
05:10	2 BRAUN C defensive rebound (3)			
05:08	30 AGBAJI O 3pt FG , jump shot missed			
05:04				1 SOCHAN J defensive rebound (1)
04:49				10 FLAGLER A 2pt FG in the paint, jump shot missed
04:46	30 AGBAJI O defensive rebound (3)			
04:42	1 YESUFU J 3pt FG , jump shot missed			
04:39				2 BROWN K defensive rebound (5)
04:34				2 BROWN K 2pt FG in the paint, layup missed
04:32	2 BRAUN C defensive rebound (4)			
04:25	2 BRAUN C 3pt FG , jump shot missed			
04:22				23 TCHAMWA TCHATCHOA J defensive rebound (4)
04:21	3 HARRIS D steal (1)			23 TCHAMWA TCHATCHOA J turnover bad pass (2)
04:16	3 HARRIS D 2pt FG from turnover in the paint, layup blocked			
04:16				23 TCHAMWA TCHATCHOA J block (1)
04:15	2 BRAUN C offensive rebound (5)			
04:15	2 BRAUN C 2pt FG from turnover second chance in the paint, layup made (11)	<b>34-15</b>	<b>19</b>	
04:15	2 BRAUN C foul drawn (1)			1 SOCHAN J foul shooting (2 - 5)
04:15	1 YESUFU J substitution out			
04:15	10 WILSON J substitution in			
04:15				10 FLAGLER A substitution out
04:15				23 TCHAMWA TCHATCHOA J substitution out
04:15				0 THAMBA F substitution in
04:15				11 AKINJO J substitution in
04:15	2 BRAUN C free throw 1 - 1 made (12)	<b>35-15</b>	<b>20</b>	
04:03		<b>35-17</b>	<b>18</b>	0 THAMBA F 2pt FG in the paint, jump shot made (3)



**Baylor at Kansas**

02/05/22 Allen Fieldhouse, Lawrence  
2021-22 Men's Basketball

**Game Time:** 3:00 PM  
**Game Duration:** 1:55  
**Attendance:** 16,300

**Officials:** Kipp Kissinger, Terry Oglesby, Rick Crawford

Game Time	KU	Score	Diff	BU
04:03				2 BROWN K assist (2)
03:55	2 BRAUN C 2pt FG fast break in the paint, alleyoop made (14)	<b>37-17</b>	<b>20</b>	
03:55	30 AGBAJI O assist (2)			
03:53				Timeout 30 Sec
03:53	Timeout media			
03:42				1 SOCHAN J 3pt FG , jump shot missed
03:38				11 AKINJO J offensive rebound (1)
03:35	3 HARRIS D steal (2)			11 AKINJO J turnover lost ball (2)
03:25	2 BRAUN C 2pt FG from turnover in the paint, driving layup missed			
03:22				1 SOCHAN J defensive rebound (2)
03:18				11 AKINJO J 3pt FG , jump shot missed
03:16				1 SOCHAN J offensive rebound (3)
03:04				3 BONNER D 3pt FG second chance, jump shot missed
03:02				0 THAMBA F offensive rebound (3)
03:02	44 LIGHTFOOT M foul shooting (2 - 4)			0 THAMBA F foul drawn (2)
02:59				0 THAMBA F free throw 1 - 2 missed
02:59				offensive dead ball rebound (2)
02:59	44 LIGHTFOOT M substitution out			
02:59	33 MCCORMACK D substitution in			
02:59				0 THAMBA F free throw 2 - 2 missed
02:56				2 BROWN K offensive rebound (6)
02:39		<b>37-19</b>	<b>18</b>	1 SOCHAN J 2pt FG second chance outside the paint, pull up jump shot made (2)
02:12	10 WILSON J 3pt FG , jump shot missed			
02:09				1 SOCHAN J defensive rebound (4)
01:54				1 SOCHAN J turnover bad pass (1)
01:36	33 MCCORMACK D foul offensive (1 - 5)			0 THAMBA F foul drawn (3)
01:36	33 MCCORMACK D turnover offensive (2)			
01:24				2 BROWN K 3pt FG from turnover, jump shot missed
01:21				1 SOCHAN J offensive rebound (5)
01:08				11 AKINJO J 2pt FG from turnover second chance outside the paint, jump shot missed
01:06	2 BRAUN C defensive rebound (6)			
00:53	33 MCCORMACK D 2pt FG in the paint, layup made (2)	<b>39-19</b>	<b>20</b>	
00:32		<b>39-21</b>	<b>18</b>	2 BROWN K 2pt FG in the paint, layup made (7)
00:32				11 AKINJO J assist (2)
00:23	Timeout 30 Sec			
00:00	turnover shot clock (5)			
<b>END OF PERIOD</b>				
<b>KU 39-21 BU</b>				



**Baylor at Kansas**

02/05/22 Allen Fieldhouse, Lawrence  
2021-22 Men's Basketball

Game Time: 3:00 PM  
Game Duration: 1:55  
Attendance: 16,300

Officials: Kipp Kissinger, Terry Oglesby, Rick Crawford

**Baylor - 21**

NO.	Name	Min	FG			Rebounds			Fouls		TP	AS	TO	ST	Blocks		+/-
			M-A	3P	FT	OR	DR	TOT	PF	FD					BS	BA	
0	Flo Thamba	F 10:36	1-1	0-0	1-4	1	2	3	1	3	3	0	0	0	0	0	-2
2	Kendall Brown	F 17:27	3-6	1-2	0-0	2	4	6	0	0	7	2	0	0	1	0	-20
24	Matthew Mayer	F 07:51	2-6	1-4	0-0	0	0	0	1	1	5	0	0	0	0	0	-4
10	Adam Flagler	G 11:33	0-4	0-2	0-0	0	1	1	0	0	0	1	1	1	0	1	-13
11	James Akinjo	G 16:18	0-7	0-3	0-0	1	0	1	0	0	0	2	2	0	0	0	-9
1	Jeremy Sochan	12:09	1-2	0-1	0-0	2	3	5	2	0	2	0	1	0	0	0	-14
3	Dale Bonner	14:42	0-3	0-2	0-0	0	0	0	0	0	0	0	1	0	0	0	-12
23	Jonathan Tchamwa Tchatchoua	09:24	1-2	0-0	2-2	1	3	4	1	1	4	0	2	1	1	0	-16
Team						0	0	0			0						
<b>Totals</b>			8-31	2-14	3-6	7	13	20	5	5	21	5	7	2	2	1	-18

Shooting By Period		
1st FG%	8-31	25.8%
3PT%	2-14	14.3%
FT%	3-6	50%
GM FG%	8-31	25.8%
3PT%	2-14	14.3%
FT%	3-6	50.0%

Dead Ball Rebounds: 2, 0

Technical Fouls: NONE

**Kansas - 39**

NO.	Name	Min	FG			Rebounds			Fouls		TP	AS	TO	ST	Blocks		+/-
			M-A	3P	FT	OR	DR	TOT	PF	FD					BS	BA	
10	Jalen Wilson	F 18:12	5-7	0-2	0-0	2	3	5	1	2	10	3	0	2	0	0	14
33	David McCormack	F 11:29	1-6	0-0	0-0	2	3	5	1	0	2	1	2	0	0	0	7
2	Christian Braun	G 17:42	6-11	1-3	1-1	1	5	6	1	1	14	0	1	1	0	1	17
3	Dajuan Harris	G 17:27	0-3	0-0	0-0	1	0	1	0	1	0	5	1	2	0	1	20
30	Ochai Agbaji	G 17:06	2-5	1-3	1-1	0	3	3	0	1	6	2	0	0	0	0	10
1	Joseph Yesufu	09:33	1-3	1-3	0-0	0	0	0	0	0	3	0	0	0	0	0	11
44	Mitch Lightfoot	08:31	2-2	0-0	0-0	1	3	4	2	0	4	0	0	0	1	0	11
Team						0	0	0			0		1				
<b>Totals</b>			17-37	3-11	2-2	7	17	24	5	5	39	11	5	5	1	2	18

Shooting By Period		
1st FG%	17-37	45.9%
3PT%	3-11	27.3%
FT%	2-2	100%
GM FG%	17-37	45.9%
3PT%	3-11	27.3%
FT%	2-2	100.0%

Dead Ball Rebounds: 0, 0

Technical Fouls: NONE

	BU	KU
Biggest lead	2 (1st 19:31)	20 (1st 4:15)
Best Scoring Run	3 (1st 13:21)	12 (1st 15:26)
Lead Changes	1	
Times Tied	1	
Time with Lead	00:57	18:33

	BU	KU
Points from		
Turnovers	0	10
Paint	10	28
Second Chance	4	15
Fast Breaks	2	13
Bench	6	7

	Period by Period Scoring		
	1st	2nd	TOT
BU	21	38	59
KU	39	44	83

Game Notes: BU #0 F. Thamba fouled out with 5:54 remaining in regulation. ♦



**Baylor at Kansas**

02/05/22 Allen Fieldhouse, Lawrence  
2021-22 Men's Basketball

**Game Time:** 3:00 PM  
**Game Duration:** 1:55  
**Attendance:** 16,300

**Officials:** Kipp Kissinger, Terry Oglesby, Rick Crawford

**Period 2**

**Quarter Starters:**

<b>KU</b>	2 Braun C	3 Harris D	10 Wilson J	30 Agbaji O	33 McCormack D
<b>BU</b>	0 Thamba F	2 Brown K	10 Flagler A	11 Akinjo J	24 Mayer M

Game Time	KU	Score	Diff	BU
20:00				1 SOCHAN J substitution out
20:00				3 BONNER D substitution out
20:00				10 FLAGLER A substitution in
20:00				24 MAYER M substitution in
19:45	3 HARRIS D 2pt FG in the paint, layup missed			
19:45	33 MCCORMACK D offensive rebound (6)			
19:45	33 MCCORMACK D foul drawn (1)			24 MAYER M foul shooting (2 - 1)
19:44	33 MCCORMACK D free throw 1 - 2 missed			
19:44	offensive dead ball rebound (1)			
19:44	33 MCCORMACK D free throw 2 - 2 made (3)	<b>40-21</b>	<b>19</b>	
19:29				24 MAYER M 2pt FG outside the paint, jump shot blocked
19:29	33 MCCORMACK D block (1)			
19:25	3 HARRIS D defensive rebound (2)			
19:25	3 HARRIS D foul drawn (2)			10 FLAGLER A foul personal (1 - 2)
19:06	3 HARRIS D turnover bad pass (2)			10 FLAGLER A steal (2)
19:01				11 AKINJO J 3pt FG from turnover, jump shot missed
18:59				24 MAYER M offensive rebound (1)
18:59	33 MCCORMACK D foul personal (2 - 1)			24 MAYER M foul drawn (2)
18:57				10 FLAGLER A 2pt FG from turnover second chance outside the paint, jump shot missed
18:54				0 THAMBA F offensive rebound (4)
18:35				0 THAMBA F 2pt FG from turnover second chance outside the paint, jump shot missed
18:33				2 BROWN K offensive rebound (7)
18:31		<b>40-24</b>	<b>16</b>	10 FLAGLER A 3pt FG from turnover second chance, jump shot made (3)
18:31				2 BROWN K assist (3)
18:16	2 BRAUN C 2pt FG in the paint, driving layup missed			
18:14	33 MCCORMACK D offensive rebound (7)			
18:13	33 MCCORMACK D foul drawn (2)			0 THAMBA F foul shooting (2 - 3)
18:13	33 MCCORMACK D free throw 1 - 2 made (4)	<b>41-24</b>	<b>17</b>	
18:13				2 BROWN K substitution out
18:13				1 SOCHAN J substitution in
18:13	33 MCCORMACK D free throw 2 - 2 made (5)	<b>42-24</b>	<b>18</b>	
18:05	30 AGBAJI O foul drawn (2)			0 THAMBA F foul offensive (3 - 4)
18:05				0 THAMBA F turnover offensive (1)
18:05				0 THAMBA F substitution out
18:05				23 TCHAMWA TCHATCHOUA J substitution in
17:45	3 HARRIS D 2pt FG from turnover in the paint, driving layup made (2)	<b>44-24</b>	<b>20</b>	
17:24	2 BRAUN C foul shooting (2 - 2)			23 TCHAMWA TCHATCHOUA J foul drawn (2)
17:24		<b>44-25</b>	<b>19</b>	23 TCHAMWA TCHATCHOUA J free throw 1 - 2 made (5)
17:24		<b>44-26</b>	<b>18</b>	23 TCHAMWA TCHATCHOUA J free throw 2 - 2 made (6)
17:18	2 BRAUN C turnover bad pass (2)			24 MAYER M steal (1)





**Baylor at Kansas**

02/05/22 Allen Fieldhouse, Lawrence  
2021-22 Men's Basketball

**Game Time:** 3:00 PM  
**Game Duration:** 1:55  
**Attendance:** 16,300

**Officials:** Kipp Kissinger, Terry Oglesby, Rick Crawford

Game Time	KU	Score	Diff	BU
17:09	3 HARRIS D foul drawn (3)			24 MAYER M foul offensive (3 - 5)
17:09				24 MAYER M turnover offensive (1)
17:09				foul coach class A technical (6)
17:09	33 MCCORMACK D free throw 1 - 2 made (6)	<b>45-26</b>	<b>19</b>	
17:09	33 MCCORMACK D free throw 2 - 2 made (7)	<b>46-26</b>	<b>20</b>	
16:56	30 AGBAJI O 3pt FG , jump shot missed			
16:51				1 SOCHAN J defensive rebound (6)
16:48				11 AKINJO J 3pt FG , jump shot missed
16:47	30 AGBAJI O defensive rebound (4)			
16:47	jump ball situation			
16:47	30 AGBAJI O turnover lost ball (1)			1 SOCHAN J steal (1)
16:47				10 FLAGLER A substitution out
16:47				2 BROWN K substitution in
16:45				23 TCHAMWA TCHATCHOUA J 2pt FG from turnover outside the paint, jump shot missed
16:43	30 AGBAJI O defensive rebound (5)			
16:43	30 AGBAJI O foul drawn (3)			2 BROWN K foul personal (1 - 7)
16:43	30 AGBAJI O 1&1 free throw 1 made (7)	<b>47-26</b>	<b>21</b>	
16:43	30 AGBAJI O 1&1 free throw 2 made (8)	<b>48-26</b>	<b>22</b>	
16:27				11 AKINJO J 2pt FG in the paint, layup blocked
16:27	10 WILSON J block (1)			
16:27	defensive rebound (30)			
16:27				11 AKINJO J substitution out
16:27				10 FLAGLER A substitution in
16:20	30 AGBAJI O turnover bad pass (2)			1 SOCHAN J steal (2)
16:15		<b>48-29</b>	<b>19</b>	10 FLAGLER A 3pt FG from turnover, jump shot made (6)
16:15				1 SOCHAN J assist (1)
16:03	30 AGBAJI O foul drawn (4)			2 BROWN K foul shooting (2 - 8)
16:03	30 AGBAJI O free throw 1 - 2 made (9)	<b>49-29</b>	<b>20</b>	
16:03	30 AGBAJI O free throw 2 - 2 made (10)	<b>50-29</b>	<b>21</b>	
15:53				1 SOCHAN J 3pt FG , jump shot missed
15:50	30 AGBAJI O defensive rebound (6)			
15:39	2 BRAUN C 2pt FG outside the paint, jump shot made (16)	<b>52-29</b>	<b>23</b>	
15:17				23 TCHAMWA TCHATCHOUA J 3pt FG , jump shot missed
15:15	30 AGBAJI O defensive rebound (7)			
15:03	2 BRAUN C turnover lost ball (3)			10 FLAGLER A steal (3)
14:59		<b>52-31</b>	<b>21</b>	10 FLAGLER A 2pt FG fast break from turnover in the paint, layup made (8)
14:59	3 HARRIS D foul shooting (1 - 3)			10 FLAGLER A foul drawn (1)
14:59	Timeout media			
14:59		<b>52-32</b>	<b>20</b>	10 FLAGLER A free throw fast break 1 - 1 made (9)
14:39	turnover sec 5 (11)			
14:22				2 BROWN K 2pt FG from turnover in the paint, layup missed
14:19	30 AGBAJI O defensive rebound (8)			
14:12	2 BRAUN C 2pt FG in the paint, layup made (18)	<b>54-32</b>	<b>22</b>	
13:55				1 SOCHAN J 2pt FG in the paint, hook shot missed
13:52	33 MCCORMACK D defensive rebound (8)			
13:37	33 MCCORMACK D foul drawn (3)			10 FLAGLER A foul shooting (2 - 9)
13:37	33 MCCORMACK D free throw 1 - 2 made (8)	<b>55-32</b>	<b>23</b>	
13:37				10 FLAGLER A substitution out



**Baylor at Kansas**

02/05/22 Allen Fieldhouse, Lawrence  
2021-22 Men's Basketball

**Game Time:** 3:00 PM  
**Game Duration:** 1:55  
**Attendance:** 16,300

**Officials:** Kipp Kissinger, Terry Oglesby, Rick Crawford

Game Time	KU	Score	Diff	BU
13:37				23 TCHAMWA TCHATCHOVA J substitution out
13:37				24 MAYER M substitution out
13:37				0 THAMBA F substitution in
13:37				3 BONNER D substitution in
13:37				11 AKINJO J substitution in
13:37	33 MCCORMACK D free throw 2 - 2 made (9)	<b>56-32</b>	<b>24</b>	
13:15		<b>56-34</b>	<b>22</b>	1 SOCHAN J 2pt FG in the paint, dunk, made (4)
13:15				3 BONNER D assist (1)
13:01	10 WILSON J 3pt FG , jump shot made (13)	<b>59-34</b>	<b>25</b>	
13:01	2 BRAUN C assist (1)			
12:39				2 BROWN K 2pt FG in the paint, jump shot missed
12:36	10 WILSON J defensive rebound (6)			
12:26	30 AGBAJI O turnover lost ball (3)			11 AKINJO J steal (1)
12:22		<b>59-36</b>	<b>23</b>	2 BROWN K 2pt FG fast break from turnover in the paint, layup made (9)
12:22				11 AKINJO J assist (3)
12:01	30 AGBAJI O foul drawn (5)			1 SOCHAN J foul personal (3 - 10)
12:01	Timeout media			
12:01				1 SOCHAN J substitution out
12:01				24 MAYER M substitution in
12:01	30 AGBAJI O free throw 1 - 2 missed			
12:01	offensive dead ball rebound (2)			
12:01	30 AGBAJI O free throw 2 - 2 made (11)	<b>60-36</b>	<b>24</b>	
11:44				0 THAMBA F 2pt FG in the paint, layup missed
11:41	2 BRAUN C defensive rebound (7)			
11:37	30 AGBAJI O 3pt FG , jump shot made (14)	<b>63-36</b>	<b>27</b>	
11:37	10 WILSON J assist (4)			
11:31	30 AGBAJI O substitution out			
11:31	1 YESUFU J substitution in			
11:31				0 THAMBA F substitution out
11:31				23 TCHAMWA TCHATCHOVA J substitution in
11:18				11 AKINJO J 2pt FG outside the paint, jump shot missed
11:16				24 MAYER M offensive rebound (2)
11:16	2 BRAUN C foul shooting (3 - 4)			24 MAYER M foul drawn (3)
11:16		<b>63-37</b>	<b>26</b>	24 MAYER M free throw 1 - 2 made (6)
11:16		<b>63-38</b>	<b>25</b>	24 MAYER M free throw 2 - 2 made (7)
11:16	2 BRAUN C substitution out			
11:16	55 COLEMAN-LANDS J substitution in			
10:47	10 WILSON J 3pt FG , jump shot missed			
10:44				24 MAYER M defensive rebound (3)
10:37				24 MAYER M 2pt FG in the paint, jump shot missed
10:35	10 WILSON J defensive rebound (7)			
10:26	55 COLEMAN-LANDS J 2pt FG outside the paint, step back jump shot made (2)	<b>65-38</b>	<b>27</b>	
10:02	1 YESUFU J foul personal (1 - 5)			2 BROWN K foul drawn (1)
10:02	33 MCCORMACK D substitution out			
10:02	44 LIGHTFOOT M substitution in			
10:02				3 BONNER D substitution out
10:02				24 MAYER M substitution out
10:02				1 SOCHAN J substitution in



**Baylor at Kansas**

02/05/22 Allen Fieldhouse, Lawrence  
2021-22 Men's Basketball

**Game Time:** 3:00 PM  
**Game Duration:** 1:55  
**Attendance:** 16,300

**Officials:** Kipp Kissinger, Terry Oglesby, Rick Crawford

Game Time	KU	Score	Diff	BU
10:02				10 FLAGLER A substitution in
09:58				10 FLAGLER A 3pt FG , jump shot missed
09:55	44 LIGHTFOOT M defensive rebound (5)			
09:42	10 WILSON J turnover bad pass (1)			11 AKINJO J steal (2)
09:36	3 HARRIS D steal (3)			11 AKINJO J turnover lost ball (3)
09:30	10 WILSON J 2pt FG fast break from turnover in the paint, driving layup made (15)	<b>67-38</b>	<b>29</b>	
09:30	3 HARRIS D assist (6)			
09:20		<b>67-40</b>	<b>27</b>	10 FLAGLER A 2pt FG in the paint, layup made (11)
09:00	44 LIGHTFOOT M 2pt FG in the paint, jump shot made (6)	<b>69-40</b>	<b>29</b>	
09:00	3 HARRIS D assist (7)			
08:49	3 HARRIS D substitution out			
08:49	10 WILSON J substitution out			
08:49	2 BRAUN C substitution in			
08:49	30 AGBAJI O substitution in			
08:49				11 AKINJO J substitution out
08:49				3 BONNER D substitution in
08:38				10 FLAGLER A 3pt FG , jump shot missed
08:35	30 AGBAJI O defensive rebound (9)			
08:28	55 COLEMAN-LANDS J 2pt FG outside the paint, jump shot made (4)	<b>71-40</b>	<b>31</b>	
08:00		<b>71-42</b>	<b>29</b>	10 FLAGLER A 2pt FG in the paint, layup made (13)
07:41	44 LIGHTFOOT M 2pt FG in the paint, hook shot made (8)	<b>73-42</b>	<b>31</b>	
07:41	55 COLEMAN-LANDS J assist (1)			
07:23	55 COLEMAN-LANDS J foul drawn (1)			23 TCHAMWA TCHATCHOUA J foul offensive (2 - 11)
07:23				23 TCHAMWA TCHATCHOUA J turnover offensive (3)
07:23	Timeout media			
07:23				2 BROWN K substitution out
07:23				23 TCHAMWA TCHATCHOUA J substitution out
07:23				0 THAMBA F substitution in
07:23				24 MAYER M substitution in
07:10	30 AGBAJI O 2pt FG from turnover in the paint, alleyoop made (16)	<b>75-42</b>	<b>33</b>	
07:10	2 BRAUN C assist (2)			
06:51				24 MAYER M 2pt FG in the paint, layup missed
06:48				offensive rebound (27)
06:45				3 BONNER D 3pt FG second chance, jump shot missed
06:41	2 BRAUN C defensive rebound (8)			
06:36	30 AGBAJI O 2pt FG outside the paint, jump shot missed			
06:34				24 MAYER M defensive rebound (4)
06:21	44 LIGHTFOOT M foul personal (3 - 6)			3 BONNER D foul drawn (1)
06:21				24 MAYER M substitution out
06:21				2 BROWN K substitution in
06:17				10 FLAGLER A 2pt FG outside the paint, jump shot missed
06:14				0 THAMBA F offensive rebound (5)
06:13				0 THAMBA F 2pt FG second chance in the paint, layup missed
06:11				0 THAMBA F offensive rebound (6)
06:10				0 THAMBA F 2pt FG second chance in the paint, layup blocked
06:10	44 LIGHTFOOT M block (2)			
06:06	55 COLEMAN-LANDS J defensive rebound (1)			



**Baylor at Kansas**

02/05/22 Allen Fieldhouse, Lawrence  
2021-22 Men's Basketball

**Game Time:** 3:00 PM  
**Game Duration:** 1:55  
**Attendance:** 16,300

**Officials:** Kipp Kissinger, Terry Oglesby, Rick Crawford

Game Time	KU	Score	Diff	BU
05:54	44 LIGHTFOOT M foul drawn (1)			0 THAMBA F foul personal (4 - 12)
05:54	44 LIGHTFOOT M free throw 1 - 2 missed			
05:54	offensive dead ball rebound (3)			
05:54	44 LIGHTFOOT M free throw 2 - 2 missed			
05:52				0 THAMBA F defensive rebound (7)
05:39		<b>75-45</b>	<b>30</b>	2 BROWN K 3pt FG , jump shot made (12)
05:23	55 COLEMAN-LANDS J 3pt FG , jump shot missed			
05:21				2 BROWN K defensive rebound (8)
05:13	44 LIGHTFOOT M foul drawn (2)			0 THAMBA F foul offensive (5 - 13)
05:13				0 THAMBA F turnover offensive (2)
05:13				0 THAMBA F substitution out
05:13				23 TCHAMWA TCHATCHOUA J substitution in
05:03	30 AGBAJI O 3pt FG from turnover, jump shot missed			
05:00	2 BRAUN C offensive rebound (9)			
04:59	2 BRAUN C turnover lost ball (4)			10 FLAGLER A steal (4)
04:42				2 BROWN K 2pt FG from turnover in the paint, layup missed
04:40	2 BRAUN C defensive rebound (10)			
04:22	55 COLEMAN-LANDS J 2pt FG in the paint, layup made (6)	<b>77-45</b>	<b>32</b>	
04:22	2 BRAUN C assist (3)			
04:00				2 BROWN K turnover travel (1)
03:59	Timeout media			
03:59	44 LIGHTFOOT M substitution out			
03:59	24 ADAMS, JR. K substitution in			
03:49	1 YESUFU J substitution out			
03:49	0 PETTIFORD B substitution in			
03:37	30 AGBAJI O 2pt FG from turnover in the paint, driving layup made (18)	<b>79-45</b>	<b>34</b>	
03:20		<b>79-47</b>	<b>32</b>	3 BONNER D 2pt FG in the paint, jump shot made (2)
02:48	turnover shot clock (15)			
02:48	2 BRAUN C substitution out			
02:48	30 AGBAJI O substitution out			
02:48	12 TEAHAN C substitution in			
02:48	20 JANKOVICH M substitution in			
02:48				1 SOCHAN J substitution out
02:48				32 LOVEDAY Z substitution in
02:38		<b>79-50</b>	<b>29</b>	10 FLAGLER A 3pt FG from turnover, jump shot made (16)
02:23	12 TEAHAN C 3pt FG , jump shot blocked			
02:23				32 LOVEDAY Z block (1)
02:17	55 COLEMAN-LANDS J offensive rebound (2)			
02:16	55 COLEMAN-LANDS J 2pt FG second chance in the paint, layup made (8)	<b>81-50</b>	<b>31</b>	
02:09				10 FLAGLER A 3pt FG , jump shot missed
02:04				10 FLAGLER A offensive rebound (2)
01:59	12 TEAHAN C foul drawn (1)			23 TCHAMWA TCHATCHOUA J foul offensive (3 - 14)
01:59				23 TCHAMWA TCHATCHOUA J turnover offensive (4)
01:43	55 COLEMAN-LANDS J turnover lost ball (1)			3 BONNER D steal (1)
01:39				2 BROWN K 2pt FG from turnover in the paint, layup blocked
01:39	24 ADAMS, JR. K block (1)			
01:39				offensive rebound (34)
01:39				2 BROWN K substitution out



**Baylor at Kansas**

02/05/22 Allen Fieldhouse, Lawrence  
2021-22 Men's Basketball

**Game Time:** 3:00 PM  
**Game Duration:** 1:55  
**Attendance:** 16,300

**Officials:** Kipp Kissinger, Terry Oglesby, Rick Crawford

Game Time	KU	Score	Diff	BU
01:39				10 FLAGLER A substitution out
01:39				14 PAUL M substitution in
01:39				21 LOVE K substitution in
01:31	24 ADAMS, JR. K foul shooting (1 - 7)			3 BONNER D foul drawn (2)
01:31		<b>81-51</b>	<b>30</b>	3 BONNER D free throw 1 - 2 made (3)
01:31				3 BONNER D free throw 2 - 2 missed
01:29	12 TEAHAN C defensive rebound (1)			
01:17	20 JANKOVICH M 3pt FG , jump shot missed			
01:13				32 LOVEDAY Z defensive rebound (1)
01:02				21 LOVE K 2pt FG outside the paint, jump shot missed
00:59	0 PETTIFORD B defensive rebound (1)			
00:54	0 PETTIFORD B 2pt FG fast break in the paint, layup made (2)	<b>83-51</b>	<b>32</b>	
00:41				3 BONNER D 2pt FG outside the paint, jump shot blocked
00:41	24 ADAMS, JR. K block (2)			
00:37				32 LOVEDAY Z offensive rebound (2)
00:35		<b>83-54</b>	<b>29</b>	21 LOVE K 3pt FG second chance, jump shot made (3)
00:35				32 LOVEDAY Z assist (1)
00:21	12 TEAHAN C 3pt FG , jump shot missed			
00:17				3 BONNER D defensive rebound (1)
00:07		<b>83-56</b>	<b>27</b>	3 BONNER D 2pt FG in the paint, layup made (5)
00:07	55 COLEMAN-LANDS J foul shooting (1 - 8)			3 BONNER D foul drawn (3)
00:07		<b>83-57</b>	<b>26</b>	3 BONNER D free throw 1 - 1 made (6)
00:05	12 TEAHAN C turnover lost ball (1)			14 PAUL M steal (1)
00:05		<b>83-59</b>	<b>24</b>	14 PAUL M 2pt FG fast break from turnover in the paint, layup made (2)
<b>END OF GAME</b>				
<b>KU 83-59 BU</b>				



**Baylor at Kansas**

02/05/22 Allen Fieldhouse, Lawrence  
2021-22 Men's Basketball

Game Time: 3:00 PM  
Game Duration: 1:55  
Attendance: 16,300

Officials: Kipp Kissinger, Terry Oglesby, Rick Crawford

**Baylor - 38**

NO.	Name	Min	FG			Rebounds			Fouls		TP	AS	TO	ST	Blocks		+/-
			M-A	M-A	M-A	OR	DR	TOT	PF	FD					BS	BA	
0	Flo Thamba	F 06:11	0-4	0-0	0-0	3	1	4	4	0	0	0	2	0	0	1	-3
2	Kendall Brown	F 15:53	2-6	1-1	0-0	1	1	2	2	1	5	1	1	0	0	1	-8
24	Matthew Mayer	F 09:24	0-3	0-0	2-2	2	2	4	2	2	2	0	1	1	0	1	-11
10	Adam Flagler	G 14:26	6-11	3-6	1-1	1	0	1	2	1	16	0	0	3	0	0	-7
11	James Akinjo	G 08:21	0-4	0-2	0-0	0	0	0	0	0	0	1	1	2	0	1	-10
1	Jeremy Sochan	13:26	1-3	0-1	0-0	0	1	1	1	0	2	1	0	2	0	0	-11
23	Jonathan Tchamwa Tchatchoua	13:49	0-2	0-1	2-2	0	0	0	2	1	2	0	2	0	0	0	-3
3	Dale Bonner	12:24	2-4	0-1	2-3	0	1	1	0	3	6	1	0	1	0	1	1
32	Zach Loveday	02:48	0-0	0-0	0-0	1	1	2	0	0	0	1	0	0	1	0	8
14	Mitchell Paul	01:39	1-1	0-0	0-0	0	0	0	0	0	2	0	0	1	0	0	7
21	Kijana Love	01:39	1-2	1-1	0-0	0	0	0	0	0	3	0	0	0	0	0	7
Team						2	0	2			0		0				
<b>Totals</b>			13-40	5-13	7-8	10	7	17	14	8	38	5	7	10	1	5	-6

Shooting By Period		
2 <sup>nd</sup> FG%	13-40	32.5%
3PT%	5-13	38.5%
FT%	7-8	87.5%
GM FG%	13-40	32.5%
3PT%	5-13	38.5%
FT%	7-8	87.5%

Dead Ball Rebounds: 0, 0

Technical Fouls: Coach 2<sup>nd</sup> 17:09

**Kansas - 44**

NO.	Name	Min	FG			Rebounds			Fouls		TP	AS	TO	ST	Blocks		+/-
			M-A	M-A	M-A	OR	DR	TOT	PF	FD					BS	BA	
10	Jalen Wilson	F 11:11	2-3	1-2	0-0	0	2	2	0	0	5	1	1	0	1	0	11
33	David McCormack	F 09:58	0-0	0-0	7-8	2	1	3	1	3	7	0	0	0	1	0	9
2	Christian Braun	G 14:45	2-3	0-0	0-0	1	3	4	2	0	4	3	3	0	0	0	10
3	Dajuan Harris	G 11:11	1-2	0-0	0-0	0	1	1	1	2	2	2	1	1	0	0	11
30	Ochai Agbaji	G 14:30	3-6	1-3	5-6	0	6	6	0	4	12	0	3	0	0	0	12
1	Joseph Yesufu	07:42	0-0	0-0	0-0	0	0	0	1	0	0	0	0	0	0	0	5
55	Jalen Coleman-Lands	11:16	4-5	0-1	0-0	1	1	2	1	1	8	1	1	0	0	0	-1
44	Mitch Lightfoot	06:03	2-2	0-0	0-2	0	1	1	1	2	4	0	0	0	1	0	5
24	KJ Adams, Jr.	03:59	0-0	0-0	0-0	0	0	0	1	0	0	0	0	0	2	0	-8
0	Bobby Pettiford	03:49	1-1	0-0	0-0	0	1	1	0	0	2	0	0	0	0	0	-8
12	Chris Teahan	02:48	0-2	0-2	0-0	0	1	1	0	1	0	0	1	0	0	1	-8
20	Michael Jankovich	02:48	0-1	0-1	0-0	0	0	0	0	0	0	0	0	0	0	0	-8
Team						0	1	1			0		2				
<b>Totals</b>			15-25	2-9	12-16	4	18	22	8	13	44	7	12	1	5	1	6

Shooting By Period		
2 <sup>nd</sup> FG%	15-25	60.0%
3PT%	2-9	22.2%
FT%	12-16	75%
GM FG%	15-25	60.0%
3PT%	2-9	22.2%
FT%	12-16	75.0%

Dead Ball Rebounds: 3, 0

Technical Fouls: NONE

	BU	KU
Biggest lead	0 (1 <sup>st</sup> 20:00)	34 (2 <sup>nd</sup> 3:37)
Best Scoring Run	8 (2 <sup>nd</sup> 0:05)	4 (2 <sup>nd</sup> 17:45)
Lead Changes	0	
Times Tied	0	
Time with Lead	00:00	19:45

Points from	BU	KU
Turnovers	17	10
Paint	16	20
Second Chance	9	5
Fast Breaks	7	4
Bench	15	14

	Period by Period Scoring		
	1st	2nd	TOT
BU	21	38	59
KU	39	44	83

Game Notes: BU #0 F. Thamba fouled out with 5:54 remaining in regulation. ♦



**Baylor at Kansas**

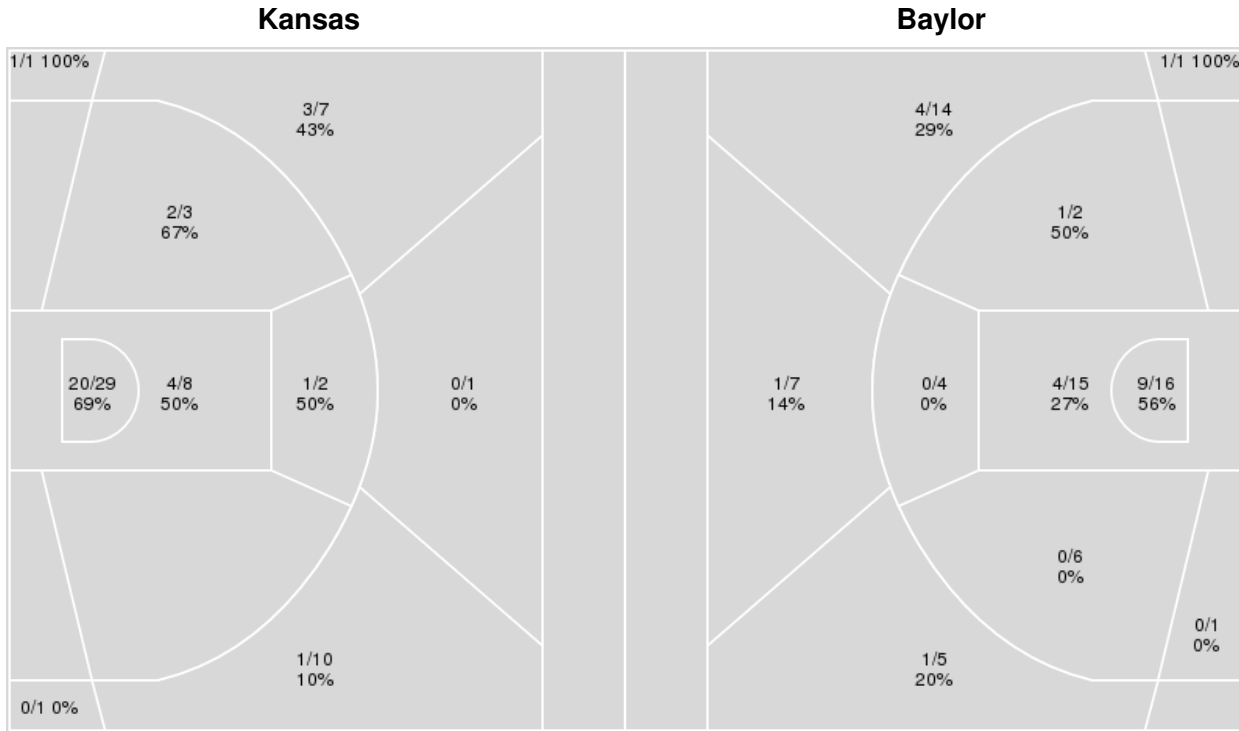
02/05/22 Allen Fieldhouse, Lawrence  
2021-22 Men's Basketball

**Game Time:** 3:00 PM  
**Game Duration:** 1:55  
**Attendance:** 16,300

**Officials:** Kipp Kissinger, Terry Oglesby, Rick Crawford

{ Players => All; } FG Types => All; Results => All;

{ Players => All; } FG Types => All; Results => All;



<b>Kansas</b>	<b>M/A</b>	<b>%</b>
Field Goals	32/62	52
2 Points	27/42	64
3 Points	5/20	25
Free Throws	14/18	78

<b>Baylor</b>	<b>M/A</b>	<b>%</b>
Field Goals	21/71	30
2 Points	14/44	32
3 Points	7/27	26
Free Throws	10/14	71

**Baylor at Kansas**02/05/22 Allen Fieldhouse, Lawrence  
2021-22 Men's Basketball

Game Time: 3:00 PM

Game Duration: 1:55

Attendance: 16,300

Officials: Kipp Kissinger, Terry Oglesby, Rick Crawford

**Baylor**

No	Name	Mins		Score		Points Diff		Points per Min		Assists		Rebounds		Steals		Turnovers	
		On	Off	On	Off	On	Off	On	Off	On	Off	On	Off	On	Off	On	Off
0	Flo Thamba	16:47	23:13	24 - 29	35 - 54	-5	-19	1.43	1.51	6	4	21	16	3	9	6	8
1	Jeremy Sochan	25:35	14:25	33 - 58	26 - 25	-25	1	1.29	1.80	7	3	19	18	8	4	11	3
2	Kendall Brown	33:20	06:40	42 - 70	17 - 13	-28	4	1.26	2.55	8	2	30	7	9	3	12	2
3	Dale Bonner	27:06	12:54	43 - 54	16 - 29	-11	-13	1.59	1.24	8	2	26	11	5	7	9	5
10	Adam Flagler	25:59	14:01	33 - 53	26 - 30	-20	-4	1.27	1.85	3	7	23	14	10	2	11	3
11	James Akinjo	24:39	15:21	33 - 52	26 - 31	-19	-5	1.34	1.69	8	2	23	14	6	6	8	6
14	Mitchell Paul	01:39	38:21	9 - 2	50 - 81	7	-31	5.45	1.30	1	9	3	34	1	11	0	14
21	Kijana Love	01:39	38:21	9 - 2	50 - 81	7	-31	5.45	1.30	1	9	3	34	1	11	0	14
23	Jonathan Tchamwa Tchatchoua	23:13	16:47	35 - 54	24 - 29	-19	-5	1.51	1.43	4	6	16	21	9	3	8	6
24	Matthew Mayer	17:15	22:45	22 - 37	37 - 46	-15	-9	1.28	1.63	3	7	16	21	6	6	4	10
32	Zach Loveday	02:48	37:12	12 - 4	47 - 79	8	-32	4.29	1.26	1	9	5	32	2	10	1	13

**Kansas**

No	Name	Mins		Score		Points Diff		Points per Min		Assists		Rebounds		Steals		Turnovers	
		On	Off	On	Off	On	Off	On	Off	On	Off	On	Off	On	Off	On	Off
0	Bobby Pettiford	03:49	36:11	6 - 14	77 - 45	-8	32	1.57	2.13	0	18	3	43	0	6	3	14
1	Joseph Yesufu	17:15	22:45	36 - 20	47 - 39	16	8	2.09	2.07	12	6	21	25	3	3	4	13
2	Christian Braun	32:27	07:33	71 - 44	12 - 15	27	-3	2.19	1.59	15	3	38	8	5	1	13	4
3	Dajuan Harris	28:38	11:22	65 - 34	18 - 25	31	-7	2.27	1.58	14	4	36	10	6	0	12	5
10	Jalen Wilson	29:23	10:37	64 - 39	19 - 20	25	-1	2.18	1.79	14	4	33	13	5	1	13	4
12	Chris Teahan	02:48	37:12	4 - 12	79 - 47	-8	32	1.43	2.12	0	18	3	43	0	6	2	15
20	Michael Jankovich	02:48	37:12	4 - 12	79 - 47	-8	32	1.43	2.12	0	18	3	43	0	6	2	15
24	KJ Adams, Jr.	03:59	36:01	6 - 14	77 - 45	-8	32	1.51	2.14	0	18	3	43	0	6	3	14
30	Ochai Agbaji	31:36	08:24	62 - 40	21 - 19	22	2	1.96	2.50	12	6	37	9	4	2	14	3
33	David McCormack	21:27	18:33	42 - 26	41 - 33	16	8	1.96	2.21	6	12	26	20	2	4	11	6
44	Mitch Lightfoot	14:34	25:26	35 - 19	48 - 40	16	8	2.40	1.89	12	6	17	29	4	2	3	14
55	Jalen Coleman-Lands	11:16	28:44	20 - 21	63 - 38	-1	25	1.78	2.19	5	13	10	36	1	5	5	12





**Baylor at Kansas**

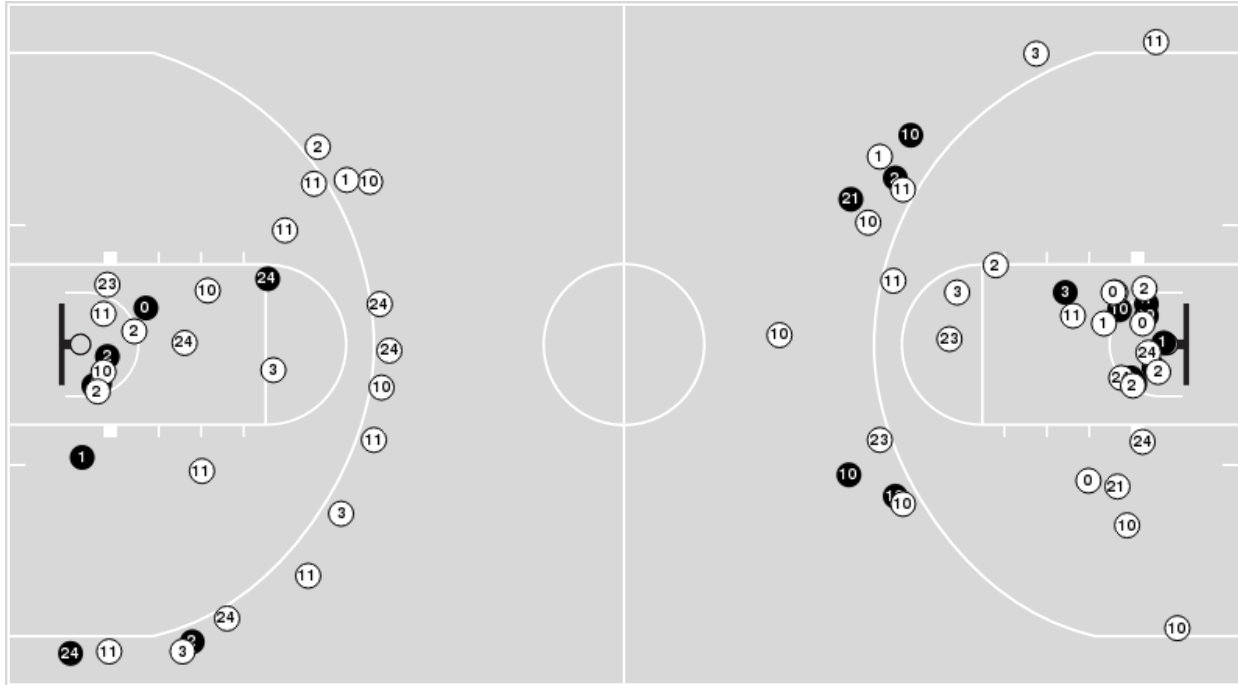
02/05/22 Allen Fieldhouse, Lawrence  
2021-22 Men's Basketball

Officials: Kipp Kissinger, Terry Oglesby, Rick Crawford

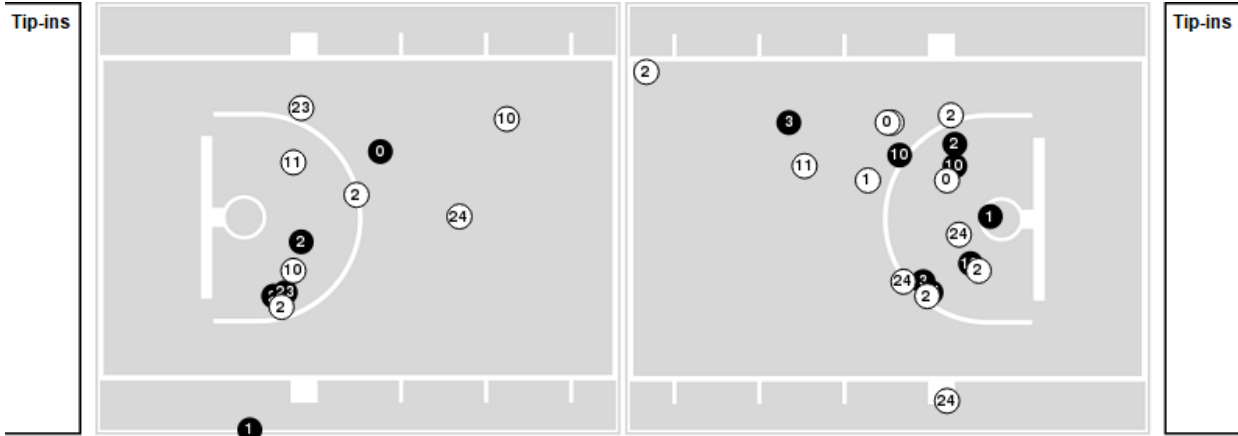
Players => AllFG Types=>AllResults=>All

**Baylor**

**All Field Goals**



**Blow Up Chart**



● Made    ○ Missed    N - Player Number

Baylor	M/A	%
Field Goals	21/71	30
2 Points	14/44	32
3 Points	7/27	26
Free Throws	10/14	71

Baylor	M/A	%
Points in the Paint	26 (13 / 31)	42
Fast Break Points	9 (5/5)	100
Second Chance Points	13 (8/19)	42
Effective FG%	35	



**Baylor at Kansas**

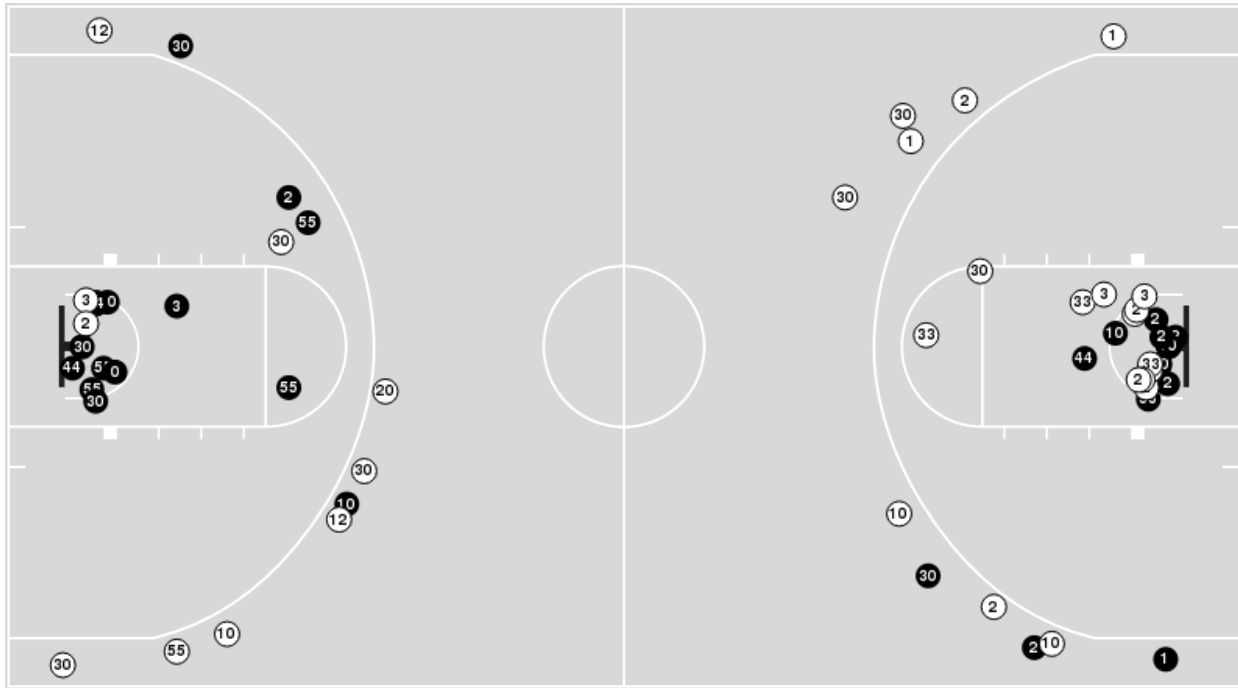
02/05/22 Allen Fieldhouse, Lawrence  
2021-22 Men's Basketball

Officials: Kipp Kissinger, Terry Oglesby, Rick Crawford

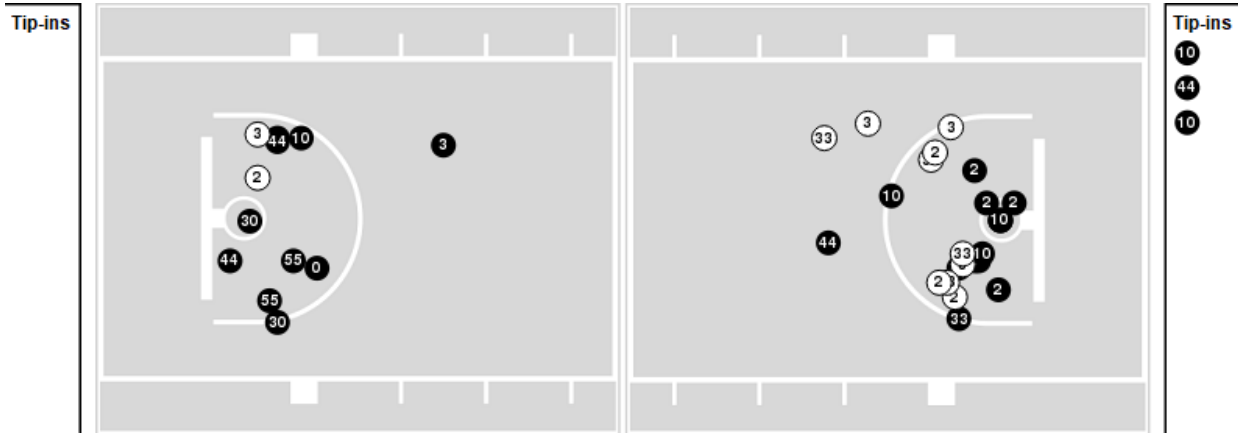
Players => AllFG Types=>AllResults=>All

**Kansas**

**All Field Goals**



**Blow Up Chart**



**N** Made    **O** Missed    N - Player Number

Kansas	M/A	%
Field Goals	32/62	52
2 Points	27/42	64
3 Points	5/20	25
Free Throws	14/18	78

Kansas	M/A	%
Points in the Paint	48 (24 / 37)	65
Fast Break Points	17 (9/9)	100
Second Chance Points	20 (11/13)	85
Effective FG%	56	



**Baylor at Kansas**

02/05/22 Allen Fieldhouse, Lawrence  
2021-22 Men's Basketball

**Game Time:** 3:00 PM  
**Game Duration:** 1:55  
**Attendance:** 16,300

**Officials:** Kipp Kissinger, Terry Oglesby, Rick Crawford

**Baylor**

Lineup	Quarter On	Time On	Quarter Off	Time Off	Time on Court	Score	Score Diff	Reb	Stl	Tov	Ass	PPP
0- Thamba F/ 2- Brown K/ 10- Flagler A/ 11- Akinjo J/ 24- Mayer M/	1	20:00	1	17:00	03:00	2-7	-5	3	0	1	0	0.4000
1- Sochan J/ 2- Brown K/ 3- Bonner D/ 10- Flagler A/ 23- Tchamwa Tchatchoua J/	1	17:00	1	15:06	01:54	0-5	-5	0	1	1	0	0.0000
1- Sochan J/ 2- Brown K/ 3- Bonner D/ 11- Akinjo J/ 23- Tchamwa Tchatchoua J/	1	15:06	1	10:54	04:12	5-11	-6	2	0	1	2	0.7143
0- Thamba F/ 3- Bonner D/ 10- Flagler A/ 11- Akinjo J/ 24- Mayer M/	1	10:54	1	08:21	02:33	6-4	2	1	0	0	1	1.5464
0- Thamba F/ 2- Brown K/ 10- Flagler A/ 11- Akinjo J/ 24- Mayer M/	1	08:21	1	07:33	00:48	0-0	0	1	1	1	0	0.0000
2- Brown K/ 10- Flagler A/ 11- Akinjo J/ 23- Tchamwa Tchatchoua J/ 24- Mayer M/	1	07:33	1	06:03	01:30	1-2	-1	3	0	0	0	0.4098
1- Sochan J/ 2- Brown K/ 3- Bonner D/ 10- Flagler A/ 23- Tchamwa Tchatchoua J/	1	06:03	1	04:15	01:48	1-5	-4	3	0	1	0	0.2252
0- Thamba F/ 1- Sochan J/ 2- Brown K/ 3- Bonner D/ 11- Akinjo J/	1	04:15	2	20:00	04:15	6-5	1	7	0	2	2	1.0204
0- Thamba F/ 2- Brown K/ 10- Flagler A/ 11- Akinjo J/ 24- Mayer M/	2	20:00	2	18:13	01:47	3-2	1	3	1	0	1	1.5000
0- Thamba F/ 1- Sochan J/ 10- Flagler A/ 11- Akinjo J/ 24- Mayer M/	2	18:13	2	18:05	00:08	0-1	-1	0	0	1	0	0.0000
1- Sochan J/ 10- Flagler A/ 11- Akinjo J/ 23- Tchamwa Tchatchoua J/ 24- Mayer M/	2	18:05	2	16:47	01:18	2-4	-2	1	2	1	0	0.6944
1- Sochan J/ 2- Brown K/ 11- Akinjo J/ 23- Tchamwa Tchatchoua J/ 24- Mayer M/	2	16:47	2	16:27	00:20	0-2	-2	0	0	0	0	0.0000
1- Sochan J/ 2- Brown K/ 10- Flagler A/ 23- Tchamwa Tchatchoua J/ 24- Mayer M/	2	16:27	2	13:37	02:50	6-7	-1	0	2	0	1	0.9317
0- Thamba F/ 1- Sochan J/ 2- Brown K/ 3- Bonner D/ 11- Akinjo J/	2	13:37	2	12:01	01:36	4-4	0	0	1	0	2	1.3333
0- Thamba F/ 2- Brown K/ 3- Bonner D/ 11- Akinjo J/ 24- Mayer M/	2	12:01	2	11:31	00:30	0-4	-4	0	0	0	0	0.0000
2- Brown K/ 3- Bonner D/ 11- Akinjo J/ 23- Tchamwa Tchatchoua J/ 24- Mayer M/	2	11:31	2	10:02	01:29	2-2	0	2	0	0	0	1.0638
1- Sochan J/ 2- Brown K/ 10- Flagler A/ 11- Akinjo J/ 23- Tchamwa Tchatchoua J/	2	10:02	2	08:49	01:13	2-4	-2	0	1	1	0	0.6667
1- Sochan J/ 2- Brown K/ 3- Bonner D/ 10- Flagler A/ 23- Tchamwa Tchatchoua J/	2	08:49	2	07:23	01:26	2-4	-2	0	0	1	0	0.6667
0- Thamba F/ 1- Sochan J/ 3- Bonner D/ 10- Flagler A/ 24- Mayer M/	2	07:23	2	06:21	01:02	0-2	-2	2	0	0	0	0.0000
0- Thamba F/ 1- Sochan J/ 2- Brown K/ 3- Bonner D/ 10- Flagler A/	2	06:21	2	05:13	01:08	3-0	3	4	0	1	0	1.0000
1- Sochan J/ 2- Brown K/ 3- Bonner D/ 10- Flagler A/ 23- Tchamwa Tchatchoua J/	2	05:13	2	02:48	02:25	2-4	-2	0	1	1	0	0.6667
2- Brown K/ 3- Bonner D/ 10- Flagler A/ 23- Tchamwa Tchatchoua J/ 32- Loveday Z/	2	02:48	2	01:39	01:09	3-2	1	2	1	1	0	1.5000
3- Bonner D/ 14- Paul M/ 21- Love K/ 23- Tchamwa Tchatchoua J/ 32- Loveday Z/	2	01:39	2	00:00	01:39	9-2	7	3	1	0	1	1.6917



**Baylor at Kansas**

02/05/22 Allen Fieldhouse, Lawrence  
2021-22 Men's Basketball

**Game Time:** 3:00 PM  
**Game Duration:** 1:55  
**Attendance:** 16,300

**Officials:** Kipp Kissinger, Terry Oglesby, Rick Crawford

**Kansas**

Lineup	Quarter On	Time On	Quarter Off	Time Off	Time on Court	Score	Score Diff	Reb	Stl	Tov	Ass	PPP
2- Braun C/ 3- Harris D/ 10- Wilson J/ 30- Agbaji O/ 33- McCormack D/	1	20:00	1	13:48	06:12	12-4	8	9	2	1	3	1.1494
1- Yesufu J/ 2- Braun C/ 3- Harris D/ 10- Wilson J/ 44- Lightfoot M/	1	13:48	1	10:54	02:54	11-3	8	4	1	0	4	1.8333
1- Yesufu J/ 2- Braun C/ 10- Wilson J/ 30- Agbaji O/ 44- Lightfoot M/	1	10:54	1	08:21	02:33	4-6	-2	2	0	1	1	1.0000
1- Yesufu J/ 3- Harris D/ 10- Wilson J/ 30- Agbaji O/ 33- McCormack D/	1	08:21	1	06:03	02:18	2-1	1	3	0	1	1	0.5000
1- Yesufu J/ 2- Braun C/ 3- Harris D/ 30- Agbaji O/ 44- Lightfoot M/	1	06:03	1	04:15	01:48	5-1	4	5	1	0	1	1.0000
2- Braun C/ 3- Harris D/ 10- Wilson J/ 30- Agbaji O/ 44- Lightfoot M/	1	04:15	1	02:59	01:16	3-2	1	0	1	0	1	1.2295
2- Braun C/ 3- Harris D/ 10- Wilson J/ 30- Agbaji O/ 33- McCormack D/	1	02:59	2	11:31	11:28	26-19	7	13	0	9	2	1.1226
1- Yesufu J/ 2- Braun C/ 3- Harris D/ 10- Wilson J/ 33- McCormack D/	2	11:31	2	11:16	00:15	0-2	-2	0	0	0	0	0.0000
1- Yesufu J/ 3- Harris D/ 10- Wilson J/ 33- McCormack D/ 55- Coleman-Lands J/	2	11:16	2	10:02	01:14	2-0	2	1	0	0	0	1.0000
1- Yesufu J/ 3- Harris D/ 10- Wilson J/ 44- Lightfoot M/ 55- Coleman-Lands J/	2	10:02	2	08:49	01:13	4-2	2	1	1	1	2	1.3333
1- Yesufu J/ 2- Braun C/ 30- Agbaji O/ 44- Lightfoot M/ 55- Coleman-Lands J/	2	08:49	2	03:59	04:50	8-5	3	5	0	1	3	1.0152
1- Yesufu J/ 2- Braun C/ 24- Adams, Jr. K/ 30- Agbaji O/ 55- Coleman-Lands J/	2	03:59	2	03:49	00:10	0-0	0	0	0	0	0	0.0000
0- Pettiford B/ 2- Braun C/ 24- Adams, Jr. K/ 30- Agbaji O/ 55- Coleman-Lands J/	2	03:49	2	02:48	01:01	2-2	0	0	0	1	0	1.0000
0- Pettiford B/ 12- Teahan C/ 20- Jankovich M/ 24- Adams, Jr. K/ 55- Coleman-Lands J/	2	02:48	2	00:00	02:48	4-12	-8	3	0	2	0	0.6667



**Baylor at Kansas**

02/05/22 Allen Fieldhouse, Lawrence  
2021-22 Men's Basketball

**Game Time:** 3:00 PM  
**Game Duration:** 1:55  
**Attendance:** 16,300

**Officials:** Kipp Kissinger, Terry Oglesby, Rick Crawford

**Baylor**

Lineup	Time	Score	Score Diff	Pts/Min	Reb	Stl	Tov	Ass	PPP
1- Sochan J/ 2- Brown K/ 3- Bonner D/ 10- Flagler A/ 23- Tchamwa Tchatchoua J/	07:33	5-18	-13	0.6623	3	2	4	0	0.3720
0- Thamba F/ 1- Sochan J/ 2- Brown K/ 3- Bonner D/ 11- Akinjo J/	05:51	10-9	1	1.7094	7	1	2	4	1.1261
0- Thamba F/ 2- Brown K/ 10- Flagler A/ 11- Akinjo J/ 24- Mayer M/	05:35	5-9	-4	0.8955	7	2	2	1	0.5556
1- Sochan J/ 2- Brown K/ 3- Bonner D/ 11- Akinjo J/ 23- Tchamwa Tchatchoua J/	04:12	5-11	-6	1.1905	2	0	1	2	0.7143
1- Sochan J/ 2- Brown K/ 10- Flagler A/ 23- Tchamwa Tchatchoua J/ 24- Mayer M/	02:50	6-7	-1	2.1176	0	2	0	1	0.9317
0- Thamba F/ 3- Bonner D/ 10- Flagler A/ 11- Akinjo J/ 24- Mayer M/	02:33	6-4	2	2.3529	1	0	0	1	1.5464
3- Bonner D/ 14- Paul M/ 21- Love K/ 23- Tchamwa Tchatchoua J/ 32- Loveday Z/	01:39	9-2	7	5.4545	3	1	0	1	1.6917
2- Brown K/ 10- Flagler A/ 11- Akinjo J/ 23- Tchamwa Tchatchoua J/ 24- Mayer M/	01:30	1-2	-1	0.6667	3	0	0	0	0.4098
2- Brown K/ 3- Bonner D/ 11- Akinjo J/ 23- Tchamwa Tchatchoua J/ 24- Mayer M/	01:29	2-2	0	1.3483	2	0	0	0	1.0638
1- Sochan J/ 10- Flagler A/ 11- Akinjo J/ 23- Tchamwa Tchatchoua J/ 24- Mayer M/	01:18	2-4	-2	1.5385	1	2	1	0	0.6944
1- Sochan J/ 2- Brown K/ 10- Flagler A/ 11- Akinjo J/ 23- Tchamwa Tchatchoua J/	01:13	2-4	-2	1.6438	0	1	1	0	0.6667
2- Brown K/ 3- Bonner D/ 10- Flagler A/ 23- Tchamwa Tchatchoua J/ 32- Loveday Z/	01:09	3-2	1	2.6087	2	1	1	0	1.5000
0- Thamba F/ 1- Sochan J/ 2- Brown K/ 3- Bonner D/ 10- Flagler A/	01:08	3-0	3	2.6471	4	0	1	0	1.0000
0- Thamba F/ 1- Sochan J/ 3- Bonner D/ 10- Flagler A/ 24- Mayer M/	01:02	0-2	-2	0.0000	2	0	0	0	0.0000
0- Thamba F/ 2- Brown K/ 3- Bonner D/ 11- Akinjo J/ 24- Mayer M/	00:30	0-4	-4	0.0000	0	0	0	0	0.0000
1- Sochan J/ 2- Brown K/ 11- Akinjo J/ 23- Tchamwa Tchatchoua J/ 24- Mayer M/	00:20	0-2	-2	0.0000	0	0	0	0	0.0000
0- Thamba F/ 1- Sochan J/ 10- Flagler A/ 11- Akinjo J/ 24- Mayer M/	00:08	0-1	-1	0.0000	0	0	1	0	0.0000



**Baylor at Kansas**

02/05/22 Allen Fieldhouse, Lawrence  
2021-22 Men's Basketball

**Game Time:** 3:00 PM  
**Game Duration:** 1:55  
**Attendance:** 16,300

**Officials:** Kipp Kissinger, Terry Oglesby, Rick Crawford

**Kansas**

Lineup	Time	Score	Score Diff	Pts/Min	Reb	Stl	Tov	Ass	PPP
2- Braun C/ 3- Harris D/ 10- Wilson J/ 30- Agbaji O/ 33- McCormack D/	17:40	38-23	15	2.1509	22	2	10	5	1.1310
1- Yesufu J/ 2- Braun C/ 30- Agbaji O/ 44- Lightfoot M/ 55- Coleman-Lands J/	04:50	8-5	3	1.6552	5	0	1	3	1.0152
1- Yesufu J/ 2- Braun C/ 3- Harris D/ 10- Wilson J/ 44- Lightfoot M/	02:54	11-3	8	3.7931	4	1	0	4	1.8333
0- Pettiford B/ 12- Teahan C/ 20- Jankovich M/ 24- Adams, Jr. K/ 55- Coleman-Lands J/	02:48	4-12	-8	1.4286	3	0	2	0	0.6667
1- Yesufu J/ 2- Braun C/ 10- Wilson J/ 30- Agbaji O/ 44- Lightfoot M/	02:33	4-6	-2	1.5686	2	0	1	1	1.0000
1- Yesufu J/ 3- Harris D/ 10- Wilson J/ 30- Agbaji O/ 33- McCormack D/	02:18	2-1	1	0.8696	3	0	1	1	0.5000
1- Yesufu J/ 2- Braun C/ 3- Harris D/ 30- Agbaji O/ 44- Lightfoot M/	01:48	5-1	4	2.7778	5	1	0	1	1.0000
2- Braun C/ 3- Harris D/ 10- Wilson J/ 30- Agbaji O/ 44- Lightfoot M/	01:16	3-2	1	2.3684	0	1	0	1	1.2295
1- Yesufu J/ 3- Harris D/ 10- Wilson J/ 33- McCormack D/ 55- Coleman-Lands J/	01:14	2-0	2	1.6216	1	0	0	0	1.0000
1- Yesufu J/ 3- Harris D/ 10- Wilson J/ 44- Lightfoot M/ 55- Coleman-Lands J/	01:13	4-2	2	3.2877	1	1	1	2	1.3333
0- Pettiford B/ 2- Braun C/ 24- Adams, Jr. K/ 30- Agbaji O/ 55- Coleman-Lands J/	01:01	2-2	0	1.9672	0	0	1	0	1.0000
1- Yesufu J/ 2- Braun C/ 3- Harris D/ 10- Wilson J/ 33- McCormack D/	00:15	0-2	-2	0.0000	0	0	0	0	0.0000
1- Yesufu J/ 2- Braun C/ 24- Adams, Jr. K/ 30- Agbaji O/ 55- Coleman-Lands J/	00:10	0-0	0	0.0000	0	0	0	0	0.0000