



BAYLOR

Follow Baylor Softball on Twitter, Instagram and Facebook: @BaylorSoftball

SOFTBALL GAME NOTES



GAMES 46-48



No. 4 BAYLOR (27-18, 8-9) at PHILLIPS 66 BIG 12 SOFTBALL CHAMPIONSHIP

Friday, May 14 • No. 6 Texas Tech • 11AM CT • OKC | HOF Stadium • Radio: 101.3 FM • Watch: Big 12 Now on ESPN+

Friday, May 14 • No. 1 Oklahoma • 2PM CT • OKC | HOF Stadium • Radio: 101.3 FM • Watch: Big 12 Now on ESPN+

Saturday, May 15 • TBD • OKC | HOF Stadium • Radio: 101.3 FM • Watch: Big 12 Now on ESPN+ or ESPN2

SCHEDULE/RESULTS

DATE	BU	OPP	OPPONENT	TV	TIME
F21	18/23	25/20	Arkansas!	Cowboy Insider	L, 2-7
F21	18/23	-/-	McNeese State!	Cowboy Insider	W, 3-2 (9)
F24	21/23	-/-	UT Arlington	Big 12 Now on ESPN+	W, 6-1
F26	21/23	-/-	UConn #	Big 12 Now on ESPN+	W, 5-0
F26	21/23	-/-	Ole Miss #	Big 12 Now on ESPN+	L, 4-10
F27	21/23	-/-	Lamar #	Big 12 Now on ESPN+	W, 100 (5)
F27	21/23	-/-	UConn #	Big 12 Now on ESPN+	L, 3-7
F28	21/23	25/RV	Mississippi St. #	Big 12 Now on ESPN+	W, 10-6
M4	RV/RV	13/12	at Louisiana	ESPN+	W, 8-1
M6	RV/RV	-/-	vs. Tarleton St. \$	---	W, 5-1
M6	RV/RV	-/-	at Louisiana Tech \$	CUSA.tv	W, 3-1
M7	RV/RV	-/-	at Louisiana Tech \$	CUSA.tv	W, 3-2
M7	RV/RV	-/-	vs. Tarleton St. \$	---	W, 2-0
M11	RV/RV	9/11	at Arizona State	ASU Live Stream	L, 4-7
M12	RV/RV	-/-	vs. Northern Illinois %	---	W, 3-2
M12	RV/RV	-/-	at Grand Canyon %	GCU TV	W, 12-1 (5)
M13	RV/RV	-/-	vs. Northern Illinois %	---	W, 8-1
M13	RV/RV	-/-	at Grand Canyon %	GCU TV	W, 12-2
M14	RV/RV	9/11	at Arizona State	ASU Live Stream	W, 7-2
M16	RV/RV	-/-	Stephen F. Austin	Big 12 Now on ESPN+	W, 3-2
M20	RV/RV	-/-	Houston	Big 12 Now on ESPN+	L, 1-3
M21	RV/RV	-/-	Houston	Big 12 Now on ESPN+	W, 2-1
M23	RV/RV	-/-	at Sam Houston	ESPN+	W, 7-3
M26	RV/RV	-/-	at Texas Tech *	Big 12 Now on ESPN+	W, 5-2
M27	RV/RV	-/-	at Texas Tech *	Big 12 Now on ESPN+	W, 8-2
M28	RV/RV	-/-	at Texas Tech *	Big 12 Now on ESPN+	W, 5-2 (8)
A1	RV/25	-/-	at BYU	BYUtv	L, 1-4
A2	RV/25	-/-	at BYU (DH)	BYUtv	L, 5-7
A2	RV/25	-/-	at BYU (DH)	BYUtv	L, 5-7
A14	-/-	-/-	Texas St.	Big 12 Now on ESPN+	L, 5-7
A17	-/-	11/11	at Oklahoma St. *	Big 12 Now on ESPN+	L, 0-4
A17	-/-	11/11	at Oklahoma St. *	Big 12 Now on ESPN+	L, 1-5
A18	-/-	11/11	at Oklahoma St. *	ESPN2	L, 3-11 (6)
A21	-/-	-/-	Sam Houston St.	Big 12 Now on ESPN+	W, 8-0 (5)
A23	-/-	-/-	at Iowa State *	Big 12 Now on ESPN+	W, 9-5
A24	-/-	-/-	at Iowa State *	Big 12 Now on ESPN+	L, 4-6
A25	-/-	-/-	at Iowa State *	Big 12 Now on ESPN+	W, 4-1
A27	-/-	1/1	Oklahoma (DH) *	ESPN	L, 1-7
A27	-/-	1/1	Oklahoma (DH) *	ESPN	L, 0-11 (6)
A30	-/-	-/-	Kansas *	Big 12 Now on ESPN+	W, 7-1
M1	-/-	-/-	Kansas *	Big 12 Now on ESPN+	W, 6-5
M2	-/-	-/-	Kansas *	Big 12 Now on ESPN+	W, 6-1
M7	-/-	14/11	at Texas *	Longhorn Network	6:30PM
M8	-/-	14/11	Texas *	Big 12 Now on ESPN+	3PM
M9	-/-	14/11	Texas *	Big 12 Now on ESPN+	1PM
M14	-/-	-/-	vs. Texas Tech ^	Big 12 Now on ESPN+	11AM
M14	-/-	1/1	vs. Oklahoma ^	Big 12 Now on ESPN+	2PM
M15	-/-	-/-	vs. TBD ^	TBD	TBD

! - Cowgirls Classic (Lake Charles, La.)
 # - Lone Star State Invitational (Waco, Texas)
 \$ - Louisiana Tech Invitational (Ruston, La.)
 % - Lopes Up Classic (Phoenix, Ariz.)
 * - Big 12 Conference game
 ^ - Phillips 66 Big 12 Championship
 Home games in bold
 All times central and subject to change

STORY LINES

- Baylor softball heads north to Oklahoma City for the 2021 Phillips 66 Big 12 Softball Championship this weekend. The fourth-seeded Lady Bears will take part in a pair of pool play games on Friday against sixth-seed Texas Tech (11 a.m.) and top-seed Oklahoma (2 p.m.). BU will then play a team from the opposite side of the bracket (No. 2 Oklahoma State, No. 3 Texas or No. 5 Iowa State) on Saturday to close things out.
- Baylor is 13-26 in the Big 12 tournament. Against current conference foes, BU is 7-16. The Lady Bears are 1-3 against Texas Tech in the tournament (W 1-0 in 1997, L 0-8 in 2001, L 4-8 in 2007, L 5-6 in 2018) and 0-4 against the Sooners (L 2-3 in 1998, L 0-1 in 2003, L 2-5 in 2004, L 4-6 in 2018).
- The Lady Bears advanced to the Big 12 title game in 2018, their most recent appearance in the conference tournament. After splitting the action on Day 1 (7-1 win over OSU, 5-6 loss to TTU), No.3 seed BU battled in a 6-4 loss to top-seeded Oklahoma.
- That was the last championship game played at the tournament as the final day in 2019 was canceled due to inclement weather and unplayable field conditions.
- The NCAA Selection Show is slated for 8 p.m. on Sunday and will be aired on ESPN2. BU looks to return to postseason action after missing the tournament in 2019 before the 2020 season was canceled due to COVID-19.
- Glenn Moore picked up win No. 800 at Baylor last Friday in BU's 7-1 victory over Kansas. Moore is the wins leader across all sports for Baylor Athletics. Last season, he reached the 900-win milestone for his career.
- Lou Gilbert and Emily Hott were named to the All-Big 12 Second Team on Wednesday afternoon. The duo moved up to the top two spots in the Baylor lineup against Sam Houston (4/21). During that time, Hott is hitting .400 with 14 hits, four doubles, a homer and five RBI, while Gilbert is hitting .361 with 13 hits, four doubles, a triple, three homers and four RBI. The two combine for 22 runs scored.
- Gilbert moved into the leadoff spot with Nicky Dawson's injury. Gilbert has both the short game and power as she has 48 hits to lead the team. Of those 48 hits, 20 of them are for extra bases (13 doubles, 2 triples, 5 home runs) and 12 of them are bunt singles.
- Hott recently saw her 29 game on-base streak come to an end in the series opener at Texas. However, her .491 on-base percentage for Big 12 play is good for sixth in the conference.
- Taylor Ellis has a hit in 10-straight games, a streak that marks a career high for the fifth-year senior. During this stretch that started in the second game at Iowa State, Ellis is hitting .414 with three extra-base hits, a team-high 12 hits and four RBI with only one strikeout. After hitting a homer in Game 2 vs. Kansas, Ellis followed that with a bomb short of the cycle in Game 3 with a bunt single, a double and a triple.
- Aliyah Binford tied a Gettnerman Stadium record with six RBI on April 30. She hit back-to-back three-run home runs. It marked the first multi-home run game by a Lady Bear since Hannah Thompson on March 10, 2020. Binford is the 55th BU player to go yard multiple times in a game.
- Binford (3/16) and Gia Rodoni (3/30) have each been named the Big 12 Pitcher of the week this season, marking the first time since 2016 and the fourth season in program history (2004, 2014, 2016, 2021) that multiple Baylor pitchers have earned the weekly conference honors.
- After 20 seasons as an assistant coach for the Lady Bears, Mark Lumley retired in October before he passed away in December after his fourth bout with cancer. The Baylor players and coaching staff have all been wearing blue ribbons in his honor. This season is for Lum.

BAYLOR (27-18)

Head Coach: Glenn Moore (25th season)
 Career Record: 941-437
 2021 Leaders
 Batting Average: Lou Gilbert (.343)
 2B: Lou Gilbert (13)
 HR: Lou Gilbert, Aliyah Binford, Goose McGlaun (5)
 RBI: Aliyah Binford (28)

POTENTIAL STARTING LINEUP

#	P	NAME	YR	AVG	R	H	2B	3B	HR	RBI
99	C	Zadie LaValley	Fr.	.216	5	21	6	0	2	19
34	1B	Goose McGlaun	Sr.	.312	27	43	10	1	5	26
4	2B	Emily Hott	Fr.	.324	33	36	8	0	3	15
10	3B	Taylor Ellis	Sr.	.315	14	40	6	2	3	19
41	SS	Aliyah Binford	Fr.	.310	17	39	9	0	5	28
8	CF	Hannah Smith	Jr.	.156	10	7	0	0	1	3
9	LF	Lou Gilbert	So.	.343	32	48	13	2	5	20
44	RF	Josie Bower	So.	.296	15	32	7	0	0	15
13	DP	Hannah Thompson	Jr.	.138	0	4	1	0	0	6
#	P	NAME	YR	ERA	W-L	IP	SO	BB	B/AVG	
7	R	Gia Rodoni	Sr.	3.58	11-9	139.0	128	42	.276	
5	R	Sidney Holman-Mansell	Jr.	4.11	8-5	76.2	71	40	.220	

PRONUNCIATIONS

GIA RODONI	GEE-uh ruh-DOE-nee
Sydney COLLAZOS	co-YAH-sos
Maren JUDISCH	JOO-dish
Ashley MARCHAND	mar-SHAWN
ANA Watson	ON-uh
Alyssa AVALOS	AH-vuh-los
Goose McGLAUN	mc-GLON
ALIYAH Binford	uh-LEE-uh
Josie BOWER	like power

TEAM HONORS

No. 4 in Preseason Big 12 Coaches Poll

INDIVIDUAL SEASON HONORS (2021)**Aliyah Binford**

LA Tech Invitational All-Tournament Team

Big 12 Pitcher of the Week (3/16)

Nicky Dawson

LA Tech Invitational All-Tournament Team

Lou Gilbert

LA Tech Invitational All-Tournament Team

All-Big 12 Second Team

Emily Hott

All-Big 12 Second Team

Goose McGlaun

Senior CLASS Award Candidate

Gia Rodoni

LA Tech Invitational All-Tournament Team

Big 12 Pitcher of the Week (3/30)

BAYLOR IN THE RANKINGS

WEEK	W/L	ESPN	NFCA
Preseason	0-0	18	22
Week 1	0-0	18	23
Week 2	1-1	21	23
Week 3	3-2	RV	RV
Week 4	5-0	RV	RV
Week 5	5-1	RV	RV
Week 6	2-1	RV	RV
Week 7	4-0	RV	25
Week 8	0-3	NR	RV
Week 9	0-0	NR	NR
Week 10	0-4	NR	NR
Week 11	4-1	NR	NR
Week 12	3-2	NR	NR
Week 13	0-3	NR	NR

QUICK HITS

- Baylor will play seven opponents ranked in ESPN's preseason Top 25, including four opponents in ESPN's Top 10.
- Baylor welcomes back everybody but one member of the 2020 team after the season was cut short due to the COVID-19 pandemic and seniors were awarded an extra year of eligibility.
- BU was picked to finish fourth in the Big 12 preseason coaches poll behind Oklahoma, Texas and Oklahoma State.
- BU started out the 2021 season ranked in the top 25 - No. 18 (ESPN.com/USA Softball Collegiate Top 25 Poll), No. 22 (NFCA Top 25 Coaches Poll), No. 19 (D1Softball) and No. 23 (Softball America). This is the 14th time the Lady Bears have begun a season ranked in the preseason Top 25 in program history, all coming under **Moore**.

MOORE ERA HIGHLIGHTS

- **Glenn Moore** is coaching his 1,197th, 1,198th and 1,199th (802-395) games at Baylor this week. His .676 winning percentage is best in BU history and he's the program's all-time wins leader.
- **Moore** recorded his 900th win overall with a 10-2 (5) victory over Grand Canyon in Waco (2/14/20).
- **Moore's** 800th career win came with a 9-3 win over McNeese State in Waco (2/22/18).
- **Moore** notched his 700th win at Baylor in the final game of the Tucson Super Regional, punching Baylor's ticket into the Women's College World Series (5/28/17).
- All but one of his 100-win milestones have come at Baylor, with his first 100th game coming during his tenure at LSU with a 6-5 win over Auburn (3/17/00).
- In **Moore's** 21 seasons as Baylor head coach, BU has cracked the Top 25 polls at some point in the season in every one.
- **Moore** has coached 88 of Baylor's 93 All-Big 12 selections and 12 of Baylor's 13 All-Americans.
- Baylor has had 9 players drafted into the National Professional Fastpitch (NPF) draft.
- Baylor has placed at least six selections to the conference's academic honors for 13 straight seasons and five or more for 18 straight years.
- With a career record of 941-437 over 25 seasons as a collegiate head coach, **Moore** now ranks 17th among active coaches in winning percentage and 22nd in total victories. He stands as the wins leader across all sports for Baylor athletics (802).

FOR LUM

- **Mark Lumley**, who helped Baylor softball make 13 NCAA regionals and four trips to the Women's College World Series in 20 years as an assistant coach, passed away in December after his fourth bout with cancer.
- **Lum**, a 1985 graduate of the University of Arizona, was inducted into the Flowing Wells High School Athletic Hall of Fame in 2014.
- During his two decades at Baylor, **Lum** coached multiple All-American hitters.
- Baylor Softball will be playing this season for him. The student-athletes and staff will each wear blue ribbons in honor of **Lum**.

2021 BAYLOR SOFTBALL ROSTER

No.	Name	B/T	Pos.	Ht.	Yr.	Exp.	Hometown/HS/Last College
2	Taylor Strain	L/R	OF	5-3	Fr.	1Yr	Robinson, Texas / Robinson HS
4	Emily Hott	L/R	UTL	5-8	Fr.	2Yr	Edmond, Okla. / Deer Creek HS
5	Sidney Holman-Mansell	R/R	P	5-10	Jr.	3Yr	Belton, Texas / Belton HS / ACU
7	Gia Rodoni	R/R	P	5-7	Sr.	6Yr	Los Banos, Calif. / Pacheco HS
8	Hannah Smith	R/R	UTL	5-10	Jr.	4Yr	Nederland, Texas / Nederland HS
9	Lou Gilbert	L/R	UTL	5-7	So.	3Yr	Kansas City, Mo. / Staley HS
10	Taylor Ellis	R/R	INF	5-8	Sr.	5Yr	Waco, Texas / Midway HS
12	Kendall Cross	L/L	INF	5-6	So.	3Yr	Friendswood, Texas / Friendswood HS
13	Hannah Thompson	R/R	C	5-7	Jr.	4Yr	Dickinson, Texas / Dickinson HS
15	Sydney Collazos	R/R	C	5-5	Fr.	1Yr	Georgetown, Texas / Georgetown HS
18	Campbell Selman	R/R	INF	5-8	Fr.	2Yr	Lufkin, Texas / Hudson HS
19	Maren Judisch	R/R	P	5-9	Fr.	1Yr	Waukee, Iowa / Des Moines Christian HS
20	Ashley Marchand	R/R	C	5-9	Jr.	4Yr	Haymarket, Va. / Battlefield HS
22	Ana Watson	L/R	OF	5-4	So.	3Yr	Hewitt, Texas / Reicher Catholic HS
23	Alyssa Avalos	L/L	OF	5-6	Jr.	4Yr	Rancho Cucamonga, Calif. / St. Lucy's Priory HS
25	Nicky Dawson	L/R	INF	5-7	Sr.	5Yr	Baton Rouge, La. / Parkview Baptist HS / LSU
34	Goose McGlaun	R/R	INF	5-8	Sr.	5Yr	Humble, Texas / Atascocita HS
41	Aliyah Binford	R/R	P/INF	5-7	Fr.	2Yr	New Braunfels, Texas / Canyon HS
44	Josie Bower	L/R	OF	5-7	So.	3Yr	Spring, Texas / Northland Christian HS
45	Katie Ellington	L/L	C	5-9	Fr.	2Yr	Tomball, Texas / Tomball HS
55	Maddison Kettler	L/R	OF	5-2	Jr.	4Yr	West, Texas / West HS
99	Zadie LaValley	R/R	C	5-8	Fr.	1Yr	Choctaw, Okla. / Carl Albert HS

COACHING & SUPPORT STAFF

Head Coach:	Glenn Moore (Northwestern State, 1993), 21st season at Baylor
Associate Head Coach:	Britni Sneed Newman (LSU, 2002), 18th season at Baylor
Assistant Coach:	Steve "Hoot" Johnigan (Texas A&M, 1989), 1st season at Baylor
Volunteer Assistant Coach:	Meagan Diaz (Baylor, 2011), 1st season at Baylor
Director of Operations:	Jon Graham (Concordia (Texas), 2013), 7th season at Baylor

BALL CAP & GOWN

- Six softball student-athletes graduated last weekend: **Alyssa Avalos** (Health, Kinesiology & Leisure Studies), **Taylor Ellis** (Master's in Sport Management), **Sidney Holman-Mansell** (Elementary Education), **Hannah Smith** (Political Science) and **Hannah Thompson** (Health, Kinesiology & Leisure Studies).
- **Nicky Dawson** (Health, Kinesiology & Leisure Studies, Master's in Sports Pedagogy), **Maddison Kettler** (Bachelor's and Master's in Communication Sciences and Disorders), **Goose McGlaun** (Education, Master's in Sports Pedagogy) and **Gia Rodoni** (Health, Kinesiology & Leisure Studies) have already graduated.

GET THE BROOMS ... AND THE UMBRELLAS

- Baylor beat the rain and the Jayhawks to sweep Kansas to earn its third Big 12 series win this season.
- **Aliyah Binford** brought the thunder on Friday night with back-to-back three-run home runs to tie the Getteman Stadium record with six RBI on the night.
- On Saturday, Baylor was up by four heading into the top of the seventh inning. Kansas rallied to cut BU's lead to one and had a runner on second with two outs when the heavens opened and the game was called due to weather to be resumed the next day. After intentionally walking KU's hottest hitter, **Gia Rodoni** needed only four pitches to get the strikeout to clinch the series.
- BU used that momentum to win by five on Sunday to earn the sweep. **Rodoni** had 10 strikeouts in the final game, **Binford** had three RBI hits and **Taylor Ellis** was a home run away from the cycle.

#SCTOP10

- Two different Lady Bears have made SportsCenter's Top 10 plays this season.
- **Alyssa Avalos** made the #SCTop10 as her diving catch in center field from Sunday's series finale at No. 11 Oklahoma State came in at No. 6.
- **Emily Hott** made the #SCTop10 with her leaping catch behind second base in the first game of a doubleheader against No. 1 Oklahoma. She came in at No. 3.

ONE-TWO PUNCH

- Lou Gilbert and Emily Hott made some noise through Big 12 play in the top two spots in the lineup.
- Hott and Gilbert are No. 6 and No. 7 with .396 and .389 averages respectively against league foes.
- Gilbert is sixth with 21 hits, second with six stolen bases, first with seven doubles, fourth with 42 total bases, and third with a .778 slugging percentage.
- Hott is 10th with nine walks and sixth with a .491 OBP.

AME-ING FOR THE SERIES

- Baylor clinched its second Big 12 series of the season at Iowa State.
- **Lou Gilbert** put on a clinic in the first game as she was a triple short of the cycle with a career-best 4-for-4 showing at the plate with a bunt single, a double and a home run to boot.
- The top of the order (**Gilbert**, **Emily Hott** and **Goose McGlaun**) were on fire the first two games of the series for BU. The trio combined for a .619 average, 13 hits, nine RBI, 10 runs scored, six extra-base hits and they each had a solo homer on Saturday.
- **Gia Rodoni** capped off the weekend with a gem on Sunday. She threw her seventh complete game of the season and gave up just one run off seven hits with seven strikeouts and no walks.

DUB CITY

- For the eighth time in program history, and the first time since 2016, Baylor opened Big 12 play 3-0 with a sweep at Texas Tech March 26-28.
- **Lou Gilbert** led the way at the plate in Lubbock as she hit .545 with a pair of doubles and four RBI to go with a .615 OBP. **Taylor Ellis** also had a good opening weekend with a .455 average and a team-high eight assists from the hot corner.
- **Gia Rodoni** and **Sidney Holman-Mansell** did most of the work in the circle for BU, combining for 18 strikeouts compared to two walks in 18.2 innings pitched.

G'S DEALIN'

- **Gia Rodoni** was named the Big 12 Pitcher of the Week (3/30) after going 3-0 on the week as she picked up the midweek win against Sam Houston before putting in some stellar work to help the Lady Bears get the sweep at Texas Tech over the weekend.
- The Los Banos, Calif., native picked up her 600th career strikeout in Friday's contest as she finished the week with a whopping 21 Ks compared to two walks. She gave up three earned runs all week through 18 innings of work. In Sunday's thrilling extra-inning win in Lubbock, Rodoni matched her career high with eight innings pitched as she gave up one earned run off six hits with six strikeouts.
- This is the eighth weekly honor from the conference for Rodoni and first since Feb. 25, 2020. Her first six nods all came in 2018 which marked a program record for single-season honors and tied for third-most in a single season by a Big 12 pitcher. Rodoni is now tied for ninth in Big 12 history with her eight weekly honors.



GLENN MOORE
HEAD COACH
21st SEASON

THE MOORE FILE**PERSONAL**

Birthplace: Liberty, Miss.

Family: Wife, Janice; daughter, Jacey, son, Ty

EDUCATION

College: Northwestern (La.) State, 1993

COACHING EXPERIENCE**Assistant Coach**

Northwestern State 1990-1992

LSU 1997-1998

Head Coach

Amite (Miss.) School Center 1994-1995

William Carey (Miss.) 1995-96

LSU 1999-2000

Baylor 2001-present

THE MOORE WORKSHEET

YEAR	SCHOOL	OVERALL	CONF.
1996	William Carey	22-17	n/a
1998	LSU	2-2	n/a
1999	LSU ^{1,3}	56-10	27-3
2000	LSU ^{1,3}	59-13	26-4
2001	Baylor	38-22	7-9
2002	Baylor	46-18	10-8
2003	Baylor	31-29	3-15
2004	Baylor ¹	48-17	11-6
2005	Baylor ¹	51-14	11-7
2006	Baylor ¹	38-22	12-6
2007	Baylor ^{1,2,3}	51-16	14-3
2008	Baylor	23-22	4-13
2009	Baylor ^{1,2,3}	40-22	11-7
2010	Baylor	28-25	6-12
2011	Baylor ^{1,2}	47-15	11-7
2012	Baylor ¹	34-22	10-14
2013	Baylor ¹	42-17	10-8
2014	Baylor ^{1,2}	49-16	13-5
2015	Baylor ¹	41-17	12-6
2016	Baylor ¹	45-14	13-4
2017	Baylor ^{1,2}	48-15	13-5
2018	Baylor ¹	38-18	12-6
2019	Baylor	18-31	2-16
2020	Baylor	19-5	N/A
2021	Baylor	27-18	8-9
TOTAL	25th season	941-437	259-177
BAYLOR	21st season	802-395	207-170

¹ NCAA Tournament Appearances | ² WCWS Appearances | ³ Conf. Championship

ESPN/USA SOFTBALL POLL (5/11)

1. Oklahoma	42-2
2. UCLA	38-3
3. Alabama	42-7
4. Florida	40-8
5. Washington.....	39-9
6. Arkansas	40-8
7. Oklahoma State.....	40-8
8. Florida State.....	38-9-1
9. Arizona State.....	32-14
10. Clemson	40-5
11. Arizona.....	35-10
12. Oregon	33-15
13. Texas	38-9
14. LSU	31-18
15. Missouri	37-14
16. Kentucky.....	38-12
17. Tennessee	39-12
18. Louisiana	40-10
19. Michigan	32-6
20. Virginia Tech	32-12
21. Duke	39-10
22. James Madison	31-1
23. Wichita State	32-6
24. Ole Miss	34-19
25. Liberty.....	39-10

USA TODAY/NFCA POLL (5/11)

1. Oklahoma	42-2
2. UCLA	38-3
3. Alabama	42-7
4. Florida	40-8
5. Washington.....	39-9
6. Arkansas	40-8
7. Florida State.....	38-9-1
8. Arizona	35-10
9. Oklahoma State.....	40-8
10. Texas	38-9
11. Oregon	33-15
12. Arizona State	32-14
13. Clemson	40-5
14. Louisiana.....	40-10
15. Missouri	37-14
16. LSU	31-18
17. Kentucky.....	38-12
18. Michigan	32-6
19. Tennessee.....	39-12
20. Virginia Tech	32-12
21. Duke	39-10
22. JMU	31-1
23. Minnesota	26-10
24. Wichita State	37-11-1
25. Liberty.....	39-13

OH SUGAR

- After leading BU with a .429 average in a shortened 2020 season, **Maddison Kettler** got off to a slow start as the outfielder was hitting .071 nine games into the year. A two-hit game against Tarleton State on March 6 seemed to get her going as she hit .517 since then for a .372 overall average through March 23.
- From **Kettler** is currently on a 13-game streak where she's reached base safely. From March 7 to March 23, she hit a whopping .565 with a .783 slugging percentage and a .636 OBP to go with three doubles, a triple, eight RBI and four multi-hit games. Most recently, **Kettler** tied her career high with three hits at Sam Houston (3/23) when she went 3-for-4 at the plate with a double and three RBI.
- Through this 13-game streak, she's the lone Bear hitting .400 as she's batting .441 with 15 hits, four of which are of the extra base variety, with eight RBI, five walks, a .513 OBP and a .588 slugging percentage.

BINFORD'S BIG 12 NOD

- **Aliyah Binford** was named the Big 12 Pitcher of the Week (3/16) as she took over in the circle with the bases loaded and one out in Sunday's game at No. 9 Arizona State and held one of the most powerful offenses in the country scoreless on their home field. Binford kept the Sun Devils off balance with her offspeed and induced a slew of groundouts to pick up the win. The right-hander gave up four hits through 5.2 innings of work.
- It marked her second win of the week as she also threw four innings in a 10-run win at GCU the day before. Against the Lopes, Binford also hit in the clean-up spot and nearly hit for the cycle as she only lacked a triple in a 3-for-5 showing at the plate with five RBI.

ALL GAS, NO BREAKS

- The Baylor offense was relentless over the weekend in Arizona. In total, the Lady Bears outscored their opponents, 46-15, and led the way in hits, 61-37. Of those 61 hits, 23 of them went for extra bases.
- In the first game at ASU, BU never quit fighting. **Nicky Dawson** set the tone with a leadoff triple and later doubled to add an RBI to her name.
- Down by five in the top of the seventh, the Lady Bears were at their last strike three-straight times but continued to battle. **Taylor Ellis** fought through a six-pitch at-bat before drawing a walk to be on base for **Zadie LaValley's** home run. **Emily Hott** followed with a double.
- After a sluggish start to the walkoff win over Northern Illinois on Friday, the Lady Bears made quick work in a run-rule victory over GCU with 12 runs off 11 hits, including a nine-run fourth inning.
- On Saturday, Baylor continued to put the pedal down with 16 hits against NIU, marking the most for BU in a game since hitting 17 against Mississippi Valley State on Feb. 17, 2018. The Lady Bears followed up that performance with 13 hits against GCU for 29 on the day.
- In the road trip finale with the rematch at ASU, Baylor continued to get things done in the box. A six-run sixth inning was ignited by back-to-back bunt singles by **Dawson** and **Lou Gilbert** before a couple of walks and hit batters brought runs home. Big swings by **Ellis** and **Maddison Kettler** added to BU's total.

BOMBS AWAY

- Entering the road trip in Arizona, Baylor had only three home runs through 13 games. In a six-game span, the Lady Bears more than tripled that total as they crushed seven homers on the weekend.
- **Zadie LaValley** got things going with her first career home run in the top of the seventh at No. 9 Arizona State on March 11. The freshman sent a shot that was foul by mere inches down the right field line before she straightened things out on the next pitch with a no-doubter over the right field wall.
- In her next at-bat (she didn't play vs. NIU on March 12) **LaValley** went yard again, this time at GCU.
- Between **LaValley** bombs, **Goose McGlaun** picked a great time to launch her second home run of the season. With the game tied at two against Northern Illinois on Friday, **McGlaun** went opposite field with a leadoff solo shot to walk off a win for the Lady Bears.
- **Ana Watson** joined the home run party on Friday with a three-run shot against the Lopes, marking her second career homer.
- The Lady Bears added three more home runs in the Lopes Up Classic finale at GCU. **Aliyah Binford** got things started with her first home run of the season in the first inning before **Lou Gilbert** followed later on in the game with a two-run homer to left field. **Hannah Smith** topped it off with her first career home run.
- **Binford** nearly messed around and hit for the cycle as she recorded a single, double and homer against GCU.

SHE'S FROM LOUISIANA

- **Nicky Dawson** must have been excited to play in her home state as she went off during BU's Louisiana Road Trip March 4-7. She finished the week hitting a team-high .421 with eight hits, a triple, two RBI and 5-for-5 in stolen base attempts.
- Against No. 13 Louisiana, **Dawson** matched her career high going 4-for-5 at the plate. She started things off for the Lady Bears with a bunt single, stole second and later scored off an RBI by **Josie Bower**. An inning later, she hit an RBI single down the right field line and stole second again. **Dawson** led off a six-run fifth inning for BU with a single to center field and scored off an double by **Lou Gilbert**. In her last at-bat, **Dawson** singled to second.
- In Ruston, **Dawson** continued to deliver for BU. She hit .286 and was 3-for-3 in stolen base attempts.
- Of course, **Dawson** would set Baylor's all-time record in career triples with her 10th overall while in Louisiana. In Sunday morning's contest vs. Louisiana Tech, **Dawson** ripped a shot to deep left center field and motored around the bases and safely made it to third for her third triple of the season and 10th of her career.

BACK-TO-BACK

- Baylor racked up back-to-back wins over ranked foes to move to 2-1 against opponents in the Top 25.
- After topping No. 25 Mississippi State, 10-6, at home, the Lady Bears downed the 13th-ranked Ragin' Cajuns at their place, 8-1.
- The Bulldogs came to Gettman Stadium ranked in the top 20 in the country averaging 7.71 runs per game. BU held the power-hitting Mississippi State team to six runs and scored a season-high 10 runs against visiting State.
- In Lafayette four days later, the Lady Bears ran Louisiana's ace out after four innings after they recorded five runs off eight hits against her. In the fifth inning alone, BU exploded for six runs off six hits as **Lou Gilbert, Goose McGlaun** and **Taylor Ellis** each doubled in the frame. It marked the worse loss by Louisiana at home since falling 9-0 (6) to then-No. 2 Florida on Feb. 17, 2018.

GOING YARD ON OPENING DAY

- **Taylor Ellis** blasted a two-run home run in her first at-bat of the 2021 season vs. Arkansas. It marked the 14th season under **Moore** that a Lady Bear hit a homer on Opening Day.
- It marked the second-straight season for **Ellis** to hit a bomb on Opening Day as she did so against Louisville a year ago. She is one of four Lady Bears in the **Moore** era to go yard in consecutive season openers: Linsey Hays (2013, 14, 15), Shelby Friudenberg (2015, 16) and Ashley Monceaux (2006, 07).

SUPER (SUPER) SENIORS

- **Nicky Dawson, Taylor Ellis, Goose McGlaun** and **Gia Rodoni** return to Baylor after the NCAA granted 2020 seniors an extra year of eligibility.
- **Dawson** only played 10 games a year ago as she dealt with an injury. She returns for 2021 at full strength. Dating back to the 2019 season, **Dawson** has reached base safely in 13-straight games. A lefty slapper, **Dawson** makes great use of her speed as she is two triples away from tying Baylor's program record.
- **Ellis** has played all over the field during her time at Baylor. After going back-and-forth between catcher and shortstop in recent years, expect **Ellis** to take over at an entirely new position - third base. She's got the arm strength and ability to handle the hot corner.
- **McGlaun** is currently sixth in Baylor history with 29 career home runs and seventh with 110 career RBI. The super-senior is expected to hold down her usual clean-up spot in the line-up as nearly half of her hits went for extra bases a year ago.
- **Rodoni** is back for her sixth year in a Baylor uniform. **Rodoni**, who finished 2020 with a 1.15 ERA, is expected to continue to rise in the BU record books. Already top 10 in nearly every category, the Los Banos, Calif., native looks to build off a strong 2020 campaign that saw her throw her fifth-career no-hitter and barely miss the first perfect game in program history in her final appearance of the season at Houston.

ALL CLASS

- **McGlaun** was named as one of 30 candidates among NCAA softball student-athletes to be considered for the 2021 Senior CLASS Award, recognizing excellence both on and off the field.
- An acronym for Celebrating Loyalty and Achievement for Staying in School, the Senior CLASS Award focuses on the total student-athlete and encourages students to use their platform in athletics to make a positive impact as leaders in their communities.
- **McGlaun** is the fourth selection to the preliminary list by a Lady Bear, joining Carlee Wallace, Heather Stearns and Kaitlyn Thumann. Thumann earned first team All-America honors as a top-five finalist, while Stearns was named to the Top 10, garnering second team recognition.

PRIVATE SCHOOLS IN THE WCWS

- Baylor's four appearances in the Women's College World Series places the Lady Bears tied for third all-time among private schools.
- The Lady Bears are the only private school to make the WCWS since 2008, doing so three times over that period (2011, 2014, 2017).
- Since 2000, Baylor leads all private schools with four appearances, with the next closest school being DePaul with three.

MOST WCWS APPEARANCES BY PRIVATE SCHOOLS

School	#	Years
1. Northwestern	5	(1984, 1985, 1986, 2006, 2007)
Creighton	5	(1969, 1980, 1992, 1997, 1998)
3. Baylor	4	(2007, 2011, 2014, 2017)
DePaul	4	(1999, 2000, 2005, 2007)
4. Lehigh	3	(1984, 1985, 1988)
5. Notre Dame	2	(2001, 2004)

RPI (5/11)

1. UCLA	Pac-12
2. Alabama	SEC
3. Florida	SEC
4. Oklahoma	Big 12
5. LSU	SEC
6. Arkansas	SEC
7. Oklahoma State	Big 12
8. Florida State	ACC
9. Texas	Big 12
10. Arizona	Pac-12
11. Tennessee	SEC
12. Arizona State	Pac-12
13. Missouri	SEC
14. Washington	Pac-12
15. Oregon	Pac-12
16. Duke	ACC
17. Georgia	SEC
18. Kentucky	SEC
19. Liberty	ASUN
20. Clemson	ACC
21. Virginia Tech	ACC
22. Villanova	Big East
23. Auburn	SEC
24. Ole Miss	SEC
25. Notre Dame	ACC
26. Louisiana	Sun Belt
27. Delaware	CAA
28. Wichita State	AAC
29. Michigan	Big Ten
30. Mississippi State	SEC
31. Texas State	Sun Belt
32. UCF	AAC
33. Princeton	Ivy League
34. Iowa State	Big 12
35. James Madison	CAA
36. George Washington	Atlantic 10
37. Miami (OH)	MAC
38. Baylor	Big 12
39. South Dakota State	Summit League
40. Minnesota	Big Ten
41. Texas A&M	SEC
42. Stanford	Pac-12
43. Troy	Sun Belt
44. Oregon State	Pac-12
45. Hofstra	CAA
46. South Alabama	Sun Belt
47. Drexel	CAA
48. DePaul	Big East
49. South Carolina	SEC
50. Boston U.	Patriot
51. Fresno State	Mountain West
52. Illinois State	MVC
53. Saint Francis (PA)	NEC
54. Kansas	Big 12
55. UNI	MVC
56. South Florida	AAC
57. Southeast Missouri State	OVC
57. Southern Illinois	MVC
59. Kennesaw State	ASUN
60. Charlotte	C-USA
61. Iona	MAAC
62. Western Kentucky	C-USA
63. Northwestern	Big Ten
64. BYU	WCC

MISCELLANEOUS STATISTICS

Current Streak.....	Lost 3
Current Home Streak.....	Lost 3
Current Road/Neutral Streak.....	Lost 1
Current Nonconference Streak.....	Won 1
Current Conference Streak.....	Lost 3
Last Win.....	May 2 vs. Kansas (6-1)
Last Home Win.....	May 2 vs. Kansas (6-1)
Last Away Win.....	April 25 at Iowa State (4-1)
Last Loss.....	May 9 vs. Texas (0-5)
Last Home Loss.....	May 9 vs. Texas (0-5)
Last Away Loss.....	May 7 at Texas (0-8)

STARTING LINEUPS BY POSITION

DATE	OPPONENT	P	C	1B	2B	3B	SS	LF	CF	RF	DP
Feb. 21	vs. #25 Arkansas	Rodoni	Collazos	McGlaun	Hott	Ellis	Binford	Gilbert	Dawson	Kettler	Watson
Feb. 21	at McNeese State	Mansell	LaValley	McGlaun	Hott	Gilbert	Binford	Watson	Dawson	Bower	Kettler
Feb. 24	UTA	Rodoni	LaValley	McGlaun	Hott	Ellis	Binford	Gilbert	Watson	Kettler	Bower
Feb. 26	UConn	Mansell	Collazos	McGlaun	Hott	Ellis	Binford	Gilbert	Dawson	Kettler	Bower
Feb. 26	Ole Miss	Rodoni	LaValley	McGlaun	Hott	Gilbert	Binford	Watson	Dawson	Bower	Kettler
Feb. 27	Lamar	Judisch	Collazos	McGlaun	Hott	Ellis	Binford	Gilbert	Dawson	Watson	Kettler
Feb. 27	UConn	Rodoni	Thompson	McGlaun	Hott	Gilbert	Selman	Watson	Dawson	Bower	Binford
Feb. 28	Mississippi State	Mansell	LaValley	McGlaun	Hott	Ellis	Binford	Gilbert	Dawson	Bower	Watson
March 4	at Louisiana	Rodoni	LaValley	McGlaun	Hott	Ellis	Binford	Gilbert	Dawson	Watson	Bower
March 6	vs. Tarleton State	Mansell	Collazos	McGlaun	Hott	Ellis	Binford	Gilbert	Dawson	Kettler	Bower
March 6	at Louisiana Tech	Rodoni	LaValley	McGlaun	Hott	Ellis	Binford	Gilbert	Dawson	Watson	Bower
March 7	at Louisiana Tech	Judisch	Collazos	McGlaun	Hott	Ellis	Binford	Gilbert	Dawson	Kettler	Bower
March 7	vs. Tarleton State	Binford	Thompson	McGlaun	Hott	Ellis	Selman	Gilbert	Dawson	Bower	Kettler
March 11	at Arizona State	Rodoni	LaValley	McGlaun	Hott	Ellis	Binford	Gilbert	Dawson	Watson	Bower
March 12	vs. Northern Illinois	Mansell	Collazos	McGlaun	Hott	Ellis	Binford	Gilbert	Dawson	Kettler	Watson
March 12	at GCU	Rodoni	LaValley	McGlaun	Hott	Gilbert	Binford	Watson	Dawson	Kettler	Bower
March 13	vs. Northern Illinois	Judisch	LaValley	McGlaun	Hott	Ellis	Binford	Gilbert	Dawson	Watson	Kettler
March 13	at GCU	Binford	Collazos	McGlaun	Hott	Ellis	Binford	Avalos	Dawson	Kettler	Gilbert
March 14	at Arizona State	Rodoni	LaValley	McGlaun	Hott	Ellis	Binford	Gilbert	Dawson	Kettler	Bower
March 16	SFA	Rodoni	Collazos	McGlaun	Hott	Ellis	Binford	Gilbert	Dawson	Kettler	LaValley
March 20	Houston	Rodoni	LaValley	McGlaun	Selman	Ellis	Binford	Gilbert	Avalos	Kettler	Bower
March 21	Houston	Mansell	Collazos	McGlaun	Smith	Ellis	Binford	Gilbert	Avalos	Kettler	LaValley
March 23	at Sam Houston	Binford	LaValley	McGlaun	Smith	Ellis	Selman	Gilbert	Avalos	Kettler	Bower
March 26	at Texas Tech	Rodoni	LaValley	McGlaun	Hott	Ellis	Binford	Gilbert	Avalos	Kettler	Bower
March 27	at Texas Tech	Mansell	Collazos	McGlaun	Hott	Ellis	Binford	Gilbert	Kettler	Bower	LaValley
March 28	at Texas Tech	Rodoni	LaValley	McGlaun	Hott	Ellis	Binford	Gilbert	Avalos	Kettler	Bower
April 1	at BYU	Rodoni	LaValley	McGlaun	Hott	Ellis	Binford	Gilbert	Avalos	Kettler	Bower
April 2	at BYU	Mansell	Collazos	McGlaun	Hott	Ellis	Binford	Gilbert	Kettler	Bower	LaValley
April 2	at BYU	Binford	LaValley	McGlaun	Hott	Ellis	Selman	Gilbert	Smith	Bower	--
April 14	Texas State	Rodoni	LaValley	McGlaun	Hott	Ellis	Selman	Gilbert	Smith	Kettler	Bower
April 17	at Oklahoma State	Rodoni	LaValley	McGlaun	Hott	Ellis	Selman	Gilbert	Smith	Kettler	Bower
April 17	at Oklahoma State	Judisch	Collazos	McGlaun	Hott	Ellis	Selman	Gilbert	Smith	Kettler	Bower
April 18	at Oklahoma State	Mansell	LaValley	McGlaun	Hott	Ellis	Selman	Gilbert	Avalos	Kettler	Bower
April 21	Sam Houston	Mansell	LaValley	McGlaun	Hott	Ellis	Binford	Gilbert	Smith	Kettler	Bower
April 23	at Iowa State	Rodoni	LaValley	McGlaun	Hott	Ellis	Binford	Gilbert	Smith	Bower	Collazos
April 24	at Iowa State	Mansell	Collazos	McGlaun	Hott	Ellis	Binford	Gilbert	Smith	Bower	LaValley
April 25	at Iowa State	Rodoni	LaValley	McGlaun	Hott	Ellis	Binford	Gilbert	Smith	Bower	Collazos
April 27	Oklahoma	Rodoni	LaValley	McGlaun	Hott	Ellis	Binford	Gilbert	Smith	Bower	Kettler
April 27	Oklahoma	Mansell	Collazos	McGlaun	Hott	Ellis	Binford	Gilbert	Smith	Avalos	Bower
April 30	Kansas	Rodoni	LaValley	McGlaun	Hott	Ellis	Binford	Gilbert	Smith	Bower	Thompson
May 1	Kansas	Mansell	LaValley	McGlaun	Hott	Ellis	Binford	Gilbert	Smith	Bower	Thompson
May 2	Kansas	Rodoni	LaValley	McGlaun	Hott	Ellis	Binford	Gilbert	Smith	Bower	Collazos
May 7	at Texas	Rodoni	LaValley	McGlaun	Hott	Ellis	Binford	Gilbert	Smith	Bower	Thompson
May 8	Texas	Mansell	LaValley	McGlaun	Hott	Ellis	Binford	Gilbert	Smith	Bower	Thompson
May 9	Texas	Rodoni	LaValley	McGlaun	Hott	Ellis	Binford	Gilbert	Smith	Bower	Collazos
May 14	vs. Texas Tech										
May 14	vs. Oklahoma										
May 15	vs. TBD										

STARTING LINEUPS BY BATTING ORDER

DATE	OPPONENT	LEADOFF	2	3	CLEANUP	5	6	7	8	9	FLEX
Feb. 21	vs. #25 Arkansas	Dawson	Kettler	McGlaun	Binford	Hott	Gilbert	Ellis	Collazos	Watson	Rodoni
Feb. 21	at McNeese State	Dawson	Gilbert	McGlaun	Binford	Hott	Watson	Bower	LaValley	Kettler	Mansell
Feb. 24	UTA	Gilbert	Kettler	Binford	McGlaun	Bower	Watson	Ellis	LaValley	Hott	Rodoni
Feb. 26	UConn	Dawson	Gilbert	Binford	McGlaun	Bower	Kettler	Ellis	Collazos	Hott	Mansell
Feb. 26	Ole Miss	Dawson	Gilbert	Binford	McGlaun	Bower	Watson	LaValley	Kettler	Hott	Rodoni
Feb. 27	Lamar	Dawson	Gilbert	McGlaun	Binford	Watson	Hott	Ellis	Collazos	Kettler	Judisch
Feb. 27	UConn	Dawson	Gilbert	McGlaun	Binford	Bower	Watson	Selman	Thompson	Hott	Rodoni
Feb. 28	Mississippi State	Dawson	Gilbert	McGlaun	Bower	Binford	Watson	Ellis	LaValley	Hott	Mansell
March 4	at Louisiana	Dawson	Gilbert	McGlaun	Bower	Binford	Hott	Ellis	LaValley	Watson	Rodoni
March 6	vs. Tarleton State	Dawson	Gilbert	McGlaun	Bower	Binford	Hott	Ellis	Collazos	Kettler	Mansell
March 6	at Louisiana Tech	Dawson	Gilbert	McGlaun	Bower	Binford	Hott	Ellis	LaValley	Watson	Rodoni
March 7	at Louisiana Tech	Dawson	Gilbert	McGlaun	Bower	Binford	Kettler	Ellis	Collazos	Hott	Judisch
March 7	vs. Tarleton State	Dawson	Gilbert	McGlaun	Bower	Binford	Kettler	Ellis	Thompson	Hott	Selman
March 11	at Arizona State	Dawson	Gilbert	McGlaun	Binford	Bower	Watson	Ellis	LaValley	Hott	Rodoni
March 12	vs. Northern Illinois	Dawson	Gilbert	McGlaun	Binford	Watson	Kettler	Ellis	Collazos	Hott	Mansell
March 12	at GCU	Dawson	Gilbert	McGlaun	Binford	Bower	Watson	LaValley	Kettler	Hott	Rodoni
March 13	vs. Northern Illinois	Dawson	Gilbert	McGlaun	Binford	Watson	Hott	Ellis	LaValley	Kettler	Judisch
March 13	at GCU	Dawson	Gilbert	McGlaun	Binford	Hott	Kettler	Ellis	Collazos	Avalos	Selman
March 14	at Arizona State	Dawson	Gilbert	Binford	McGlaun	LaValley	Hott	Bower	Ellis	Kettler	Rodoni
March 16	SFA	Dawson	Gilbert	Binford	McGlaun	LaValley	Hott	Ellis	Collazos	Kettler	Rodoni
March 20	Houston	Gilbert	Kettler	Binford	McGlaun	LaValley	Bower	Ellis	Selman	Avalos	Rodoni
March 21	Houston	Gilbert	Kettler	McGlaun	LaValley	Binford	Avalos	Ellis	Collazos	Smith	Mansell
March 23	at Sam Houston	Gilbert	Kettler	McGlaun	LaValley	Binford	Avalos	Ellis	Bower	Smith	Selman
March 26	at Texas Tech	Gilbert	Kettler	McGlaun	LaValley	Binford	Hott	Ellis	Bower	Avalos	Rodoni
March 27	at Texas Tech	Gilbert	Kettler	McGlaun	LaValley	Binford	Bower	Ellis	Collazos	Hott	Mansell
March 28	at Texas Tech	Gilbert	Kettler	McGlaun	Ellis	LaValley	Hott	Binford	Bower	Avalos	Rodoni
April 1	at BYU	Gilbert	Kettler	McGlaun	Ellis	LaValley	Hott	Binford	Bower	Avalos	Rodoni
April 2	at BYU	Gilbert	Kettler	McGlaun	Ellis	Binford	Bower	LaValley	Collazos	Hott	Mansell
April 2	at BYU	Gilbert	Smith	McGlaun	Ellis	Binford	Bower	LaValley	Selman	Hott	--
April 14	Texas State	Gilbert	Kettler	McGlaun	Ellis	Hott	Bower	LaValley	Selman	Smith	Rodoni
April 17	at Oklahoma State	Hott	Gilbert	McGlaun	Ellis	Bower	Kettler	LaValley	Selman	Smith	Rodoni
April 17	at Oklahoma State	Gilbert	Kettler	McGlaun	Ellis	Bower	Hott	Collazos	Selman	Smith	Judisch
April 18	at Oklahoma State	Gilbert	Kettler	McGlaun	Hott	LaValley	Ellis	Bower	Selman	Avalos	Mansell
April 21	Sam Houston	Gilbert	Hott	McGlaun	Binford	Ellis	LaValley	Bower	Smith	Kettler	Mansell
April 23	at Iowa State	Gilbert	Hott	McGlaun	Ellis	Binford	LaValley	Bower	Collazos	Smith	Rodoni
April 24	at Iowa State	Gilbert	Hott	McGlaun	Ellis	Binford	Bower	LaValley	Collazos	Smith	Mansell
April 25	at Iowa State	Gilbert	Hott	McGlaun	Binford	Ellis	Bower	LaValley	Collazos	Smith	Rodoni
April 27	Oklahoma	Gilbert	Hott	McGlaun	Ellis	Binford	Kettler	Bower	LaValley	Smith	Rodoni
April 27	Oklahoma	Gilbert	Hott	McGlaun	Ellis	Binford	Smith	Bower	Collazos	Avalos	Mansell
April 30	Kansas	Gilbert	Hott	McGlaun	Binford	Ellis	Bower	LaValley	Thompson	Smith	Rodoni
May 1	Kansas	Gilbert	Hott	McGlaun	Binford	Ellis	Bower	LaValley	Thompson	Smith	Mansell
May 2	Kansas	Gilbert	Hott	McGlaun	Binford	Ellis	Bower	LaValley	Collazos	Smith	Rodoni
May 7	at Texas	Gilbert	Hott	McGlaun	Binford	Ellis	Bower	LaValley	Thompson	Smith	Rodoni
May 8	Texas	Gilbert	Hott	McGlaun	Binford	Ellis	Bower	LaValley	Thompson	Smith	Mansell
May 9	Texas	Gilbert	Hott	McGlaun	Binford	Bower	Ellis	Collazos	LaValley	Smith	Rodoni
May 14	vs. Texas Tech										
May 14	vs. Oklahoma										
May 15	vs. TBD										

ROSTER BREAKDOWN**BY CLASS****Senior (4)**

Gia Rodoni, Taylor Ellis, Nicky Dawson, Goose McGlaun

Junior (6)

Sidney Holman-Mansell, Maddison Kettler, Hannah Smith, Hannah Thompson, Ashley Marchand, Alyssa Avalos

Sophomore (5)

Lou Gilbert, Kendall Cross, Ana Watson, Josie Bower

Freshman (8)

Katie Ellington, Emily Hott, Campbell Selman, Aliyah Binford, Sydney Collazos, Maren Judisch, Taylor Strain, Zandie LaValley

BY HOME STATE**Texas (15)**

Josie Bower, Kendall Cross, Taylor Ellis, Sidney Holman-Mansell, Maddison Kettler, Goose McGlaun, Hannah Smith, Hannah Thompson, Ana Watson, Katie Ellington, Campbell Selman, Aliyah Binford, Taylor Strain, Sydney Collazos

California (2)

Alyssa Avalos, Gia Rodoni

Iowa (1)

Maren Judisch

Louisiana (1)

Nicky Dawson

Missouri (1)

Lou Gilbert

Oklahoma (2)

Emily Hott, Zandie LaValley

Virginia (1)

Ashley Marchand

BATTING**LEFT (11)**

Alyssa Avalos, Josie Bower, Kendall Cross, Nicky Dawson, Katie Ellington, Lou Gilbert, Emily Hott, Maddison Kettler, Taylor Strain, Ana Watson

RIGHT (12)

Aliyah Binford, Sydney Collazos, Taylor Ellis, Sidney Holman-Mansell, Maren Judisch, Zandie LaValley, Ashley Marchand, Goose McGlaun, Gia Rodoni, Campbell Selman, Hannah Smith, Hannah Thompson

THROWING**LEFT (5)**

Alyssa Avalos, Kendall Cross, Katie Ellington

RIGHT (18)

Aliyah Binford, Josie Bower, Sydney Collazos, Nicky Dawson, Taylor Ellis, Lou Gilbert, Sidney Holman-Mansell, Emily Hott, Maren Judisch, Maddison Kettler, Zandie LaValley, Ashley Marchand, Goose McGlaun, Gia Rodoni, Campbell Selman, Hannah Smith, Taylor Strain, Hannah Thompson, Ana Watson

HITTING STREAKS

Player	Season High	Current	Career High
Nicky Dawson	7	4	10 (2019)
Maddison Kettler	6	--	8 (2020)
Goose McGlaun	8	--	10 (2019)
Taylor Ellis	10	10	10 (2021)
Lou Gilbert	5	--	9 (2020)
Ana Watson	5	5	5 (2021)
Aliyah Binford	4	--	4 (2020, 2021)
Emily Hott	11	2	11 (2021)
Josie Bower	5	1	6 (2020)
Zadie LaValley	7	1	7 (2021)
Sydney Collazos	2	--	2 (2021)
Alyssa Avalos	2	1	2 (2021)
Hannah Smith	3	--	3 (2021)

ON BASE STREAKS

Player	Season High	Current	Career High
Goose McGlaun	9	--	19 (2018)
Maddison Kettler	13	--	16 (2017)
Nicky Dawson	18	18	26 (2019)
Taylor Ellis	10	10	10 (2021)
Lou Gilbert	8	1	15 (2019)
Ana Watson	8	8	8 (2021)
Aliyah Binford	8	--	8 (2021)
Emily Hott	29	2	29 (2021)
Josie Bower	8	1	8 (2021)
Zadie LaValley	8	1	8 (2021)
Hannah Smith	3	--	3 (2021)

MULTI-HIT GAMES

Player	2021	Career
Maddison Kettler	6	41
Goose McGlaun	11	51
Taylor Ellis	8	34
Nicky Dawson	9	34
Lou Gilbert	14	28
Aliyah Binford	11	16
Emily Hott	6	9
Ana Watson	4	14
Josie Bower	10	12
Zadie LaValley	3	3

MULTI-RBI GAMES

Player	2021	Career
Goose McGlaun	6	31
Taylor Ellis	6	26
Emily Hott	3	5
Aliyah Binford	4	9
Josie Bower	2	5
Maddison Kettler	3	5
Lou Gilbert	4	6
Hannah Thompson	2	8
Zadie LaValley	7	7
Ana Watson	4	8
Nicky Dawson	1	12

CAREER HOME RUNS**GOOSE MCGLAUN (34)**

No.	Opponent	Date	RBI
34	at Iowa State	4/24/2021	1
33	at Texas Tech	3/27/2021	1
32	at Sam Houston	3/23/2021	2
31	vs. NIU	3/12/2021	1
30	UT Arlington	2/24/2021	1
29	at Houston	3/10/2020	3
28	Central Arkansas	3/20/2019	1
27	McNeese State	3/12/2019	1
26	Louisiana	3/11/2019	1
25	TEXAS	5/5/2018	--
24	TEXAS	5/5/2018	3
23	at Iowa State	4/28/2018	3
22	at Texas Tech	4/6/2018	--
21	at Texas Tech	4/6/2018	5
20	at Abilene Christian	4/4/2018	1
19	vs. North Dakota St.	3/25/2018	--
18	vs. North Dakota St.	3/25/2018	3
17	vs. Delaware	3/10/2018	1
16	vs. Delaware	3/9/2018	3
15	at Long Beach St.	3/6/2018	3
14	vs. Louisiana	3/4/2018	1
13	vs. Charlotte	3/3/2018	1
12	vs. Michigan	3/2/2018	3
11	at Arizona	5/28/17	3
10	vs. Texas	5/13/17	2
9	TEXAS	5/5/17	1
8	TEXAS TECH	3/31/17	1
7	TEXAS TECH	3/31/17	2
6	ACU	3/29/17	1
5	at ULL	3/9/17	2
4	vs. UCLA	3/5/17	2
3	vs. UCLA	3/5/17	3
2	vs. Michigan	3/3/17	1
1	McNEESE ST	2/22/17	2

HANNAH THOMPSON (7)

No.	Opponent	Date	RBI
7	at Houston	3/10/2020	1
6	at Houston	3/10/2020	2
5	Kent State	2/23/2019	1
4	North Texas	2/22/2019	3
3	vs. McNeese St.	5/18/2018	3
2	vs. Oklahoma St.	5/11/2018	2
1	vs. Delaware	3/9/2018	1

TAYLOR ELLIS (10)

No.	Opponent	Date	RBI
10	Kansas	5/1/2021	2
9	Sam Houston	4/21/2021	2
8	vs. Arkansas	2/21/2021	2
7	vs. Louisville	2/7/2020	1
6	at Oklahoma	4/5/2019	2
5	at Oklahoma	4/5/2019	1
4	vs. Southern Utah	3/1/2019	2
3	North Texas	2/22/2019	2
2	at Texas Tech	4/6/2018	3
1	vs. Miss. Valley St.	2/17/2018	4

MADDISON KETTLER (1)

No.	Opponent	Date	RBI
1	at N'western St	3/8/2017	2

ANA WATSON (2)

No.	Opponent	Date	RBI
2	at GCU	3/12/2021	3
1	Oklahoma State	3/22/2019	2

JOSIE BOWER (3)

No.	Opponent	Date	RBI
3	Illinois	2/21/2020	2
2	Grand Canyon	2/14/2020	3
1	LSU	4/27/2019	1

ALIYAH BINFORD (10)

No.	Opponent	Date	RBI
10	Kansas	4/30/2021	3
9	Kansas	4/30/2021	3
8	at BYU	4/2/2021	1
7	at BYU	4/2/2021	1
6	at GCU	3/13/2021	2
5	at Houston	3/10/2020	1
4	vs. Florida State	2/29/2020	2
3	Louisiana Tech	2/25/2020	1
2	Illinois	2/23/2020	1
1	vs. Missouri	2/8/2020	1

ALYSSA AVALOS (1)

No.	Opponent	Date	RBI
1	at Arkansas	2/27/2020	1

LOU GILBERT (6)

No.	Opponent	Date	RBI
6	Kansas	5/1/2021	1
5	at Iowa State	4/24/2021	1
4	at Iowa State	4/23/2021	2
3	at Oklahoma State	4/18/2021	1
2	at GCU	3/13/2021	2
1	at Houston	3/10/2020	1

EMILY HOTT (3)

No.	Opponent	Date	RBI
3	at Iowa State	4/24/2021	1
2	at Texas Tech	3/28/2021	2
1	UT Arlington	2/24/2021	1

ZADIE LAVALLEY (2)

No.	Opponent	Date	RBI
2	at GCU	3/12/2021	2
1	at Arizona St.	3/11/2021	2

HANNAH SMITH (1)

No.	Opponent	Date	RBI
1	at GCU	3/13/2021	2

Bold denotes multi-HR game

2021 SEASON STATISTICS

**Statistics Summary for Baylor (as of May 11, 2021)
(All games)**

Record: 27-18 Home: 12-8 Away: 14-9 Neutral: 1-1 Big 12: 8-9

Date	Opponent	Score	Player	avg	gp-gs	ab	r	h	2b	3b	hr	rbi	bb	hbp	so	sb-att
2/21	vs #20 Arkansas	L 2-7	25 Dawson, Nicky	.394	19-19	66	20	26	2	5	0	7	5	1	7	11-13
2/21	at McNeese	w 3-2	9 Gilbert, Lou	.343	45-45	140	32	48	13	2	5	20	17	2	13	15-17
2/24	#21 UT ARLINGTON	w 6-1	4 Hott, Emily	.324	42-42	111	33	36	8	0	3	15	20	5	19	3-5
2/26	UCONN	w 5-0	10 Ellis, Taylor	.315	43-41	127	14	40	6	2	3	19	5	0	17	0-1
2/26	OLE MISS	L 4-10	34 McGlaun, Goose	.312	45-45	138	27	43	10	1	5	26	15	0	17	4-4
2/27	LAMAR	w 10-0	41 Binford, Aliyah	.310	41-41	126	17	39	9	0	5	28	6	2	21	2-2
2/27	UCONN	L 3-7	44 Bower, Josie	.296	41-38	108	15	32	7	0	0	15	11	7	11	2-2
2/28	#25 MISSISSIPPI STATE	w 10-6	55 Kettler, Maddiso	.280	33-29	75	9	21	3	1	0	11	9	0	7	4-7
3/4	at #12 Louisiana	w 8-1	99 LaValley, Zadie	.216	38-34	97	5	21	6	0	2	19	13	1	21	1-1
3/6	at Tarleton State	w 5-1	8 Smith, Hannah	.156	35-18	45	10	7	0	0	1	3	5	0	10	1-1
3/6	at Louisiana Tech	w 3-1	15 Collazos, Sydne	.106	24-18	47	4	5	1	0	0	3	2	2	6	1-1
3/7	at Louisiana Tech	w 3-2	-----													
3/7	TARLETON STATE	w 2-0	22 Watson, Ana	.353	13-13	34	9	12	3	0	1	13	3	2	5	0-3
3/11	at #11 Arizona State	L 4-7	19 Judisch, Maren	.333	3-0	3	0	1	0	0	0	0	0	0	1	0-0
3/12	NORTHERN ILLINOIS	w 3-2	23 Avalos, Alyssa	.138	34-9	29	10	4	0	0	0	1	2	0	8	2-4
3/12	at Grand Canyon	w 12-1	13 Thompson, Han	.138	22-6	29	0	4	1	0	0	6	1	1	6	0-0
3/13	vs Northern Illinois	w 8-1	18 Selman, Campb	.063	29-10	16	0	1	0	0	0	0	0	1	7	1-1
3/13	at Grand Canyon	w 12-2	12 Cross, Kendall	.000	7-0	3	1	0	0	0	0	0	2	1	2	0-0
3/14	at #11 Arizona State	w 7-2	45 Ellington, Katie	.000	3-0	3	0	0	0	0	0	0	0	0	2	0-0
3/16	SFA	w 3-2	7 Rodoni, Gia	.000	1-1	0	0	0	0	0	0	0	0	0	0	0-0
3/20	HOUSTON	L 1-3	Totals	.284	45	1197	206	340	69	11	25	186	116	25	180	47-62
3/21	HOUSTON	w 2-1	Opponents	.250	45	1170	169	293	42	2	38	156	115	24	255	34-41

LOB - Team (263), Opp (270). DPs turned - Team (10), Opp (15). IBB - Team (1), Bower 1, Opp (4).

Player	era	w-l	app	gs	cg	sh	sv	ip	h	r	er	bb	so
19 Judisch, Maren	2.25	3-1	14	4	2	1	0	37.1	32	12	12	10	20
7 Rodoni, Gia	3.58	11-9	30	23	11	0	4	139.0	151	80	71	42	128
41 Binford, Aliyah	3.70	5-3	17	4	1	1	1	47.1	45	30	25	23	36
5 Mansell, Sidney	4.11	8-5	22	14	1	0	0	76.2	65	47	45	40	71
Totals	3.57	27-18	45	45	15	4	5	300.1	293	169	153	115	255
Opponents	4.40	18-27	45	45	16	5	0	297.2	340	206	187	116	180

PB - Team (4), LaValley 3, Collazos 1, Opp (2). SBA/ATT - LaValley (25-29), Rodoni (19-22), Mansell (10-12), Collazos (6-6), Binford (4-5), Thompson (3-3), Judisch (1-2).

Score by innings	1	2	3	4	5	6	7	8	9	Total
Baylor	27	36	35	44	23	23	14	3	1	206
Opponents	23	36	25	20	17	26	22	0	0	169

Win-loss breakouts: Day 20-12; Night 7-6; vs Left 9-3; vs Right 18-15;
 1-run games 6-0; 2-run games 2-5; 5+run games 12-8; Extra inns 2-0; Shutouts 4-5.
 Current streak: Lost 3; Longest winning streak: 6; Longest losing streak: 7.
 Attendance: Home 7460 (avg 373); Away 5855 (avg 243); Total 13315 (avg 302).

2021 BIG 12 STATISTICS**Statistics Summary for Baylor (as of May 11, 2021)
(Big 12 games only)**

Record: 8-9 Home: 3-4 Away: 5-5 Big 12: 8-9

Date	Opponent	Score	Player	avg	gp-gs	ab	r	h	2b	3b	hr	rbi	bb	hbp	so	sb-att
*3/26	at Texas Tech	w 5-2	4 Hott, Emily	.396	17-17	48	15	19	5	0	2	8	9	0	7	0-1
*3/27	at Texas Tech	w 8-2	9 Gilbert, Lou	.389	17-17	54	12	21	7	1	4	10	7	1	5	6-8
*3/28	at Texas Tech	w 5-2	10 Ellis, Taylor	.327	17-17	52	4	17	3	1	1	5	1	0	6	0-1
*4/17	at #11 Oklahoma State	L 0-4	34 McGlaun, Goose	.271	17-17	48	7	13	2	0	2	9	8	0	11	1-1
*4/17	at #11 Oklahoma State	L 1-5	41 Binford, Aliyah	.256	14-14	43	7	11	1	0	2	13	1	0	9	0-0
*4/18	at #11 Oklahoma State	L 3-11	44 Bower, Josie	.244	17-17	45	6	11	1	0	0	3	3	4	2	1-1
*4/23	at Iowa State	w 9-5	55 Kettler, Maddiso	.130	8-7	23	1	3	0	0	0	0	2	0	3	1-1
*4/24	at Iowa State	L 4-6	99 LaValley, Zadie	.119	17-15	42	1	5	3	0	0	5	7	0	11	1-1
*4/25	at Iowa State	w 4-1	8 Smith, Hannah	.107	15-13	28	4	3	0	0	0	1	4	0	9	1-1
*4/27	#1 OKLAHOMA	L 1-7	15 Collazos, Sydne	.045	10-8	22	0	1	0	0	0	1	0	1	4	0-0
*4/27	#1 OKLAHOMA	L 0-11	-----													
*4/30	KANSAS	w 7-1	18 Selman, Campb	.250	10-3	4	0	1	0	0	0	0	0	1	3	1-1
*5/1	KANSAS	w 6-5	23 Avalos, Alyssa	.100	13-4	10	2	1	0	0	0	0	1	0	6	1-1
*5/2	KANSAS	w 6-1	13 Thompson, Han	.071	9-4	14	0	1	0	0	0	1	1	0	3	0-0
*5/7	at #11 Texas	L 0-8	12 Cross, Kendall	.000	2-0	2	0	0	0	0	0	0	0	0	1	0-0
*5/8	#14 TEXAS	L 0-6	19 Judisch, Maren	.000	2-0	2	0	0	0	0	0	0	0	0	1	0-0
*5/9	#14 TEXAS	L 0-5	Totals	.245	17	437	59	107	22	2	11	56	44	7	81	13-17
			Opponents	.268	17	451	82	121	16	1	18	75	45	5	93	12-14

LOB - Team (92), Opp (92). DPs turned - Team (2), Opp (8).

Player	era	w-l	app	gs	cg	sh	sv	ip	h	r	er	bb	so
7 Rodoni, Gia	3.96	6-4	12	10	7	0	1	69.0	75	43	39	18	59
41 Binford, Aliyah	4.00	0-1	5	0	0	0	0	14.0	10	10	8	7	12
5 Mansell, Sidney	7.30	2-3	7	6	0	0	0	23.0	27	24	24	15	15

19 Judisch, Maren	4.77	0-1	3	1	0	0	0	7.1	9	5	5	5	7
Totals	4.69	8-9	17	17	7	0	1	113.1	121	82	76	45	93
Opponents	3.38	9-8	17	17	6	5	0	114.0	107	59	55	44	81

PB - Team (1), LaValley 1, Opp (2). SBA/ATT - LaValley (10-12), Rodoni (8-10), Binford (2-2), Collazos (2-2), Mansell (1-1), Judisch (1-1).

Score by innings	1	2	3	4	5	6	7	8	Total
Baylor	6	9	14	13	6	7	1	3	59
Opponents	6	18	15	9	8	15	11	0	82

Win-loss breakouts: Day 6-7; Night 2-2; vs Left 3-3; vs Right 5-6;

1-run games 1-0; 2-run games 0-1; 5+run games 3-6; Extra inns 1-0; Shutouts 0-5.

Current streak: Lost 3; Longest winning streak: 3; Longest losing streak: 3.

Attendance: Home 3942 (avg 563); Away 3158 (avg 315); Total 7100 (avg 417).

SEASON RESULTS

**2021 Baylor Softball
Game Results for Baylor (as of May 11, 2021)
(All games)**

Date	Opponent	Score	Inns	Overall	Big 12	Pitcher of record	Attend	Time
Feb 21, 2021	vs #20 Arkansas	L 2-7	7	0-1-0	0-0-0	Rodoni (L 0-1)	0	1:30
Feb 21, 2021	at McNeese	w 3-2	(9)	1-1-0	0-0-0	Binford (W 1-0)	376	3 hr
Feb 24, 2021	#21 UT ARLINGTON	w 6-1	7	2-1-0	0-0-0	Rodoni (W 1-1)	263	1:50
Feb 26, 2021	UCONN	w 5-0	7	3-1-0	0-0-0	Mansell (W 1-0)	300	1:20
Feb 26, 2021	OLE MISS	L 4-10	7	3-2-0	0-0-0	Binford (L 1-1)	300	2:22
Feb 27, 2021	LAMAR	w 10-0	5	4-2-0	0-0-0	Judisch (W 1-0)	150	1:49
Feb 27, 2021	UCONN	L 3-7	7	4-3-0	0-0-0	Rodoni (L 1-2)	300	1:46
Feb 28, 2021	#25 MISSISSIPPI STATE	w 10-6	7	5-3-0	0-0-0	Mansell (W 2-0)	248	2:18
Mar 04, 2021	at #12 Louisiana	w 8-1	7	6-3-0	0-0-0	Rodoni (W 2-2)	262	2:17
Mar 06, 2021	at Tarleton State	w 5-1	7	7-3-0	0-0-0	Mansell (W 3-0)	0	2:03
Mar 06, 2021	at Louisiana Tech	w 3-1	7	8-3-0	0-0-0	Rodoni (W 3-2)	250	2:00
Mar 07, 2021	at Louisiana Tech	w 3-2	7	9-3-0	0-0-0	Judisch (W 2-0)	250	2:05
Mar 07, 2021	TARLETON STATE	w 2-0	7	10-3-0	0-0-0	Binford (W 2-1)	250	1:37
Mar 11, 2021	at #11 Arizona State	L 4-7	7	10-4-0	0-0-0	Rodoni (L 3-3)	372	2:15
Mar 12, 2021	NORTHERN ILLINOIS	w 3-2	7	11-4-0	0-0-0	Mansell (W 4-0)	0	1:48
Mar 12, 2021	at Grand Canyon	w 12-1	5	12-4-0	0-0-0	Rodoni (W 4-3)	45	1:45
Mar 13, 2021	vs Northern Illinois	w 8-1	7	13-4-0	0-0-0	Judisch (W 3-0)	0	1:56
Mar 13, 2021	at Grand Canyon	w 12-2	7	14-4-0	0-0-0	Binford (W 3-1)	45	2:15
Mar 14, 2021	at #11 Arizona State	w 7-2	7	15-4-0	0-0-0	Binford (W 3-1)	323	2:12
Mar 16, 2021	SFA	w 3-2	7	16-4-0	0-0-0	Mansell (W 5-0)	280	2:18
Mar 20, 2021	HOUSTON	L 1-3	7	16-5-0	0-0-0	Rodoni (L 4-4)	403	1:56
Mar 21, 2021	HOUSTON	w 2-1	7	17-5-0	0-0-0	Binford (W 5-1)	376	2:14
Mar 23, 2021	at Sam Houston	w 7-3	7	18-5-0	0-0-0	Rodoni (W 5-4)	115	2:21
* Mar 26, 2021	at Texas Tech	w 5-2	7	19-5-0	1-0-0	Rodoni (W 6-4)	227	2:19
* Mar 27, 2021	at Texas Tech	w 8-2	7	20-5-0	2-0-0	Mansell (W 6-0)	435	2:15
* Mar 28, 2021	at Texas Tech	w 5-2	(8)	21-5-0	3-0-0	Rodoni (W 7-4)	251	2:28
Apr 01, 2021	at BYU	L 1-4	7	21-6-0	3-0-0	Rodoni (L 7-4)	280	2:06
Apr 02, 2021	at BYU-1	L 5-7	7	21-7-0	3-0-0	Mansell (L 6-1)	-	2:25
Apr 02, 2021	at BYU-2	L 5-7	7	21-8-0	3-0-0	Binford (L 5-2)	379	2:10
Apr 14, 2021	TEXAS STATE	L 5-7	7	21-9-0	3-0-0	Mansell (L 6-2)	340	2:35
* Apr 17, 2021	at #11 Oklahoma State-1	L 0-4	7	21-10-0	3-1-0	Rodoni (L 7-6)	281	2:12
* Apr 17, 2021	at #11 Oklahoma State-2	L 1-5	7	21-11-0	3-2-0	Judisch (L 3-1)	376	2:07
* Apr 18, 2021	at #11 Oklahoma State	L 3-11	6	21-12-0	3-3-0	Mansell (L 6-3)	348	2:19
Apr 21, 2021	SAM HOUSTON	w 8-0	5	22-12-0	3-3-0	Mansell (W 7-3)	308	1:35
* Apr 23, 2021	at Iowa State	w 9-5	7	23-12-0	4-3-0	Rodoni (W 8-6)	167	2:24
* Apr 24, 2021	at Iowa State	L 4-6	7	23-13-0	4-4-0	Binford (L 5-3)	286	2:16
* Apr 25, 2021	at Iowa State	w 4-1	7	24-13-0	5-4-0	Rodoni (W 9-6)	225	1:50
* Apr 27, 2021	#1 OKLAHOMA-1	L 1-7	7	24-14-0	5-5-0	Rodoni (L 9-7)	600	2:07
* Apr 27, 2021	#1 OKLAHOMA-2	L 0-11	6	24-15-0	5-6-0	Mansell (L 7-4)	600	2:10
* Apr 30, 2021	KANSAS	w 7-1	7	25-15-0	6-6-0	Rodoni (W 10-7)	421	1:55
* May 01, 2021	KANSAS	w 6-5	7	26-15-0	7-6-0	Mansell (W 8-4)	613	2+
* May 02, 2021	KANSAS	w 6-1	7	27-15-0	8-6-0	Rodoni (W 11-7)	508	2:20
* May 07, 2021	at #11 Texas	L 0-8	6	27-16-0	8-7-0	Rodoni (L 11-8)	562	1:42
* May 08, 2021	#14 TEXAS	L 0-6	7	27-17-0	8-8-0	Mansell (L 8-5)	600	2:04
* May 09, 2021	#14 TEXAS	L 0-5	7	27-18-0	8-9-0	Rodoni (L 11-9)	600	1:55

() extra inning game

BAYLOR GAME-BY-GAME

2021 Baylor Softball
Team Game-by-Game for Baylor (as of May 11, 2021)
Batting (All games)

Date	Opponent	ab	r	h	rbi	2b	3b	hr	tb	bb	ibb	sb	cs	hbp	sac	sf	qdp	k	po	a	e	lob	avg
Feb 21	vs Arkansas	24	2	3	2	0	0	1	6	0	0	0	0	0	0	0	0	7	18	5	0	1	.125
Feb 21	at McNeese	41	3	11	1	4	0	0	15	0	0	0	0	2	0	0	0	3	27	16	0	13	.215
Feb 24	UT ARLINGTON	23	6	8	6	3	1	2	19	2	0	0	0	0	1	1	0	0	21	6	1	3	.250
Feb 26	UCONN	26	5	7	5	1	1	0	10	2	0	3	0	0	0	0	0	1	21	6	0	5	.254
Feb 26	OLE MISS	25	4	6	4	1	0	0	7	2	1	0	1	0	0	0	0	4	21	10	1	2	.252
Feb 27	LAMAR	22	10	9	9	2	1	0	13	5	0	7	0	0	0	0	0	0	15	10	1	5	.273
Feb 27	UCONN	28	3	8	3	2	0	0	10	3	0	0	0	0	0	0	0	3	21	9	0	7	.275
Feb 28	MISSISSIPPI STAT	28	10	12	8	1	0	0	13	3	0	3	0	1	0	0	0	4	21	10	0	4	.295
Mar 04	at Louisiana	35	8	14	7	4	0	0	18	3	0	4	0	0	0	0	1	9	21	10	1	9	.310
Mar 06	at Tarleton State	30	5	9	3	1	0	0	10	6	0	3	1	0	1	0	0	4	21	14	2	11	.309
Mar 06	at Louisiana Tech	26	3	6	3	1	0	0	7	2	0	2	1	1	0	0	0	4	21	11	0	5	.302
Mar 07	at Louisiana Tech	28	3	7	3	2	1	0	11	1	0	2	1	0	0	1	0	3	21	8	0	6	.298
Mar 07	TARLETON STATE	25	2	7	2	1	1	0	10	2	0	2	0	0	0	0	0	4	21	10	0	7	.296
Mar 11	at Arizona State	24	4	5	3	2	1	1	12	1	0	1	1	2	0	1	0	9	18	5	1	3	.291
Mar 12	NORTHERN ILLINO	26	3	9	3	3	0	1	15	3	0	0	1	0	1	0	0	0	21	7	2	9	.294
Mar 12	at Grand Canyon	26	12	11	10	3	0	2	20	6	0	1	1	2	1	0	0	4	15	4	0	8	.302
Mar 13	vs Northern Illinois	35	8	16	8	1	1	0	19	1	0	1	1	0	0	0	0	6	21	11	0	7	.314
Mar 13	at Grand Canyon	36	12	13	9	2	2	3	28	3	0	1	0	2	1	0	0	5	21	14	1	9	.317
Mar 14	at Arizona State	28	7	7	7	1	0	0	8	3	0	0	0	3	0	0	0	6	21	9	0	6	.313
Mar 16	SFA	19	3	5	2	1	0	0	6	4	0	3	1	0	1	0	0	1	21	8	1	3	.312
Mar 20	HOUSTON	23	1	4	1	0	0	0	4	2	0	0	1	0	0	0	0	3	21	6	1	3	.306
Mar 21	HOUSTON	29	2	10	2	3	0	0	13	2	0	0	0	0	2	0	0	3	21	4	0	11	.308
Mar 23	at Sam Houston	29	7	9	7	3	0	1	15	2	0	0	0	1	1	0	0	0	21	4	1	5	.308
*Mar 26	at Texas Tech	27	5	8	5	2	0	0	10	3	0	0	0	0	0	1	0	4	21	6	1	5	.308
*Mar 27	at Texas Tech	30	8	12	8	2	0	1	17	3	0	1	0	2	1	0	0	4	21	7	1	7	.312
*Mar 28	at Texas Tech	29	5	6	5	2	0	1	11	8	0	1	1	1	0	0	0	11	24	8	1	9	.307
Apr 01	at BYU	26	1	5	1	0	0	0	5	1	0	0	0	0	0	0	0	4	18	5	0	5	.303
Apr 02	at BYU	26	5	7	5	1	0	1	11	2	0	0	1	1	1	0	0	2	18	10	1	4	.302
Apr 02	at BYU	30	5	9	5	2	0	1	14	2	0	0	0	2	0	0	0	5	18	2	0	8	.302
Apr 14	TEXAS STATE	27	5	9	5	1	0	0	10	4	0	0	0	1	1	1	0	5	21	8	1	8	.303
*Apr 17	at Oklahoma State	23	0	3	0	0	0	0	3	2	0	0	0	0	0	0	0	8	18	5	0	4	.299
*Apr 17	at Oklahoma State	24	1	3	1	1	0	0	4	5	0	0	0	0	0	0	0	7	18	6	0	7	.294
*Apr 18	at Oklahoma State	25	3	7	3	2	0	1	12	4	0	1	0	1	0	0	0	5	17	7	3	9	.293
Apr 21	SAM HOUSTON	15	8	7	6	1	0	1	11	5	0	1	0	0	2	2	0	0	15	6	1	4	.296
*Apr 23	at Iowa State	32	9	13	8	3	0	1	19	3	0	1	1	0	0	1	1	3	21	3	0	6	.300
*Apr 24	at Iowa State	28	4	7	4	1	0	3	17	0	0	1	0	1	0	0	0	3	18	9	0	4	.299
*Apr 25	at Iowa State	23	4	4	3	0	0	0	4	4	0	2	2	0	1	0	0	4	21	11	0	3	.296
*Apr 27	OKLAHOMA	26	1	5	1	2	1	0	9	1	0	0	0	0	0	0	0	6	21	3	2	5	.293
*Apr 27	OKLAHOMA	20	0	2	0	0	0	0	2	1	0	0	0	0	0	0	0	7	18	4	0	3	.289
*Apr 30	KANSAS	28	7	10	7	1	0	2	17	2	0	1	0	1	0	0	0	1	21	3	0	6	.291
*May 01	KANSAS	24	6	5	5	1	0	2	12	3	0	1	0	0	0	0	0	2	21	8	0	3	.289
*May 02	KANSAS	28	6	11	6	4	1	0	17	3	0	3	0	0	0	1	0	3	21	4	0	8	.292
*May 07	at Texas	19	0	2	0	1	0	0	3	2	0	0	0	0	0	0	1	4	17	6	1	3	.289
*May 08	TEXAS	26	0	4	0	0	0	0	4	0	0	0	0	0	0	0	0	7	21	10	4	5	.286
*May 09	TEXAS	25	0	5	0	0	0	0	5	0	0	1	0	1	0	0	1	2	21	8	1	5	.284
Totals		1197	206	340	186	69	11	25	506	116	1	47	15	25	15	9	4	180	901	336	30	263	.284

OPPONENT GAME-BY-GAME

**2021 Baylor Softball
Opponent Game-by-Game for Baylor (as of May 11, 2021)
Batting (All games)**

Date	Opponent	ab	r	h	rbi	2b	3b	hr	tb	bb	ibb	sb	cs	hbp	sac	sf	qdp	k	po	a	e	lob	avg
Feb 21	vs Arkansas	20	7	5	7	2	0	1	10	4	0	0	1	5	2	0	0	7	21	2	0	6	.250
Feb 21	at McNeese	32	2	7	1	0	0	0	7	5	0	2	1	1	0	0	0	8	27	17	3	9	.231
Feb 24	UT ARLINGTON	27	1	5	1	1	0	0	6	1	0	0	0	0	0	0	0	4	18	9	0	6	.215
Feb 26	UCONN	24	0	3	0	0	0	0	3	2	0	1	0	0	0	0	0	9	18	8	1	5	.194
Feb 26	OLE MISS	31	10	10	10	3	0	3	22	7	1	0	0	1	1	0	0	4	21	10	0	9	.224
Feb 27	LAMAR	21	0	6	0	0	0	0	6	2	0	0	0	0	0	1	0	0	12	5	1	9	.232
Feb 27	UCONN	27	7	10	7	1	0	1	14	5	2	3	0	0	3	0	0	5	21	6	0	7	.253
Feb 28	MISSISSIPPI STAT	31	6	9	6	0	0	3	18	1	0	0	0	1	0	0	0	6	18	6	2	6	.258
Mar 04	at Louisiana	27	1	6	1	1	0	0	7	1	0	1	0	0	0	0	0	4	21	6	1	6	.254
Mar 06	at Tarleton State	24	1	3	0	0	0	0	3	1	0	0	0	0	0	0	1	6	21	9	2	3	.242
Mar 06	at Louisiana Tech	27	1	7	1	1	0	0	8	0	0	1	0	1	2	0	0	9	21	10	0	8	.244
Mar 07	at Louisiana Tech	26	2	3	2	1	0	0	4	3	0	1	0	2	0	0	0	7	21	9	2	8	.233
Mar 07	TARLETON STATE	24	0	3	0	0	0	0	3	0	0	1	0	0	0	0	0	6	18	5	1	3	.226
Mar 11	at Arizona State	27	7	9	7	2	0	2	17	4	0	0	0	0	1	0	0	3	21	7	0	7	.234
Mar 12	NORTHERN ILLINO	26	2	4	0	1	0	0	5	2	0	0	0	0	1	0	0	7	18	9	1	6	.228
Mar 12	at Grand Canyon	21	1	6	1	0	0	0	6	0	0	0	0	1	0	0	0	4	15	6	3	6	.231
Mar 13	vs Northern Illinois	25	1	5	1	2	0	1	10	1	0	0	0	1	0	0	0	1	21	7	1	5	.230
Mar 13	at Grand Canyon	25	2	7	2	0	0	0	7	2	0	0	1	0	1	0	0	4	21	8	3	5	.232
Mar 14	at Arizona State	25	2	6	2	1	0	0	7	6	1	2	0	1	1	0	1	5	21	5	1	10	.233
Mar 16	SFA	26	2	5	2	1	0	0	6	2	0	0	0	2	0	0	0	6	18	12	0	7	.231
Mar 20	HOUSTON	24	3	5	3	1	0	0	6	4	0	2	1	0	2	0	0	10	21	5	0	6	.230
Mar 21	HOUSTON	23	1	4	1	1	0	0	5	4	0	3	1	0	1	0	0	8	20	9	1	6	.227
Mar 23	at Sam Houston	27	3	5	3	1	0	0	6	3	0	1	0	0	0	0	0	11	21	11	1	6	.225
*Mar 26	at Texas Tech	25	2	5	2	0	0	2	11	1	0	0	0	0	1	0	1	6	21	9	0	4	.224
*Mar 27	at Texas Tech	26	2	5	0	1	0	0	6	2	0	0	0	0	0	0	0	7	21	7	0	5	.223
*Mar 28	at Texas Tech	27	2	6	1	1	0	0	7	1	0	2	0	0	1	0	0	6	24	7	0	3	.223
Apr 01	at BYU	24	4	7	4	2	0	2	15	0	0	1	0	0	1	0	0	6	21	13	0	3	.225
Apr 02	at BYU	24	7	6	6	1	1	2	15	3	0	0	0	2	1	0	0	3	21	14	1	5	.226
Apr 02	at BYU	27	7	9	7	2	0	2	17	2	0	0	0	0	0	0	0	4	21	9	0	4	.230
Apr 14	TEXAS STATE	35	7	14	6	1	0	3	24	4	0	2	0	1	0	0	0	9	21	9	0	12	.238
*Apr 17	at Oklahoma State	28	4	12	3	2	0	1	17	2	0	2	1	0	1	0	0	4	21	6	0	9	.244
*Apr 17	at Oklahoma State	26	5	9	5	1	0	0	10	4	0	1	0	0	1	0	0	5	21	4	1	8	.248
*Apr 18	at Oklahoma State	22	11	9	9	2	0	2	17	5	0	1	0	0	3	1	0	4	18	10	0	3	.252
Apr 21	SAM HOUSTON	19	0	3	0	0	0	0	3	1	0	1	0	0	0	0	0	6	12	5	1	5	.250
*Apr 23	at Iowa State	31	5	10	5	1	1	2	19	1	0	0	0	0	0	0	0	7	21	13	1	6	.252
*Apr 24	at Iowa State	24	6	5	6	1	0	2	12	4	0	1	0	1	0	0	0	10	21	5	0	5	.251
*Apr 25	at Iowa State	26	1	6	0	0	0	0	6	0	0	0	1	0	0	0	0	7	21	9	2	4	.251
*Apr 27	OKLAHOMA	27	7	4	7	0	0	3	13	4	0	0	0	1	0	0	0	3	21	6	1	4	.248
*Apr 27	OKLAHOMA	28	11	10	11	1	0	0	11	7	0	0	0	0	0	1	0	4	18	4	0	7	.251
*Apr 30	KANSAS	24	1	4	1	0	0	1	7	2	0	1	0	1	0	0	0	6	18	7	0	5	.249
*May 01	KANSAS	27	5	6	5	2	0	2	14	4	0	0	0	0	0	0	0	3	18	3	1	5	.248
*May 02	KANSAS	24	1	3	1	0	0	1	6	0	0	0	0	0	0	0	0	10	18	4	1	2	.245
*May 07	at Texas	26	8	11	8	3	0	0	14	2	0	0	0	0	1	0	0	5	18	5	0	4	.250
*May 08	TEXAS	30	6	7	6	0	0	0	7	5	0	2	0	2	0	1	0	3	21	7	1	11	.249
*May 09	TEXAS	30	5	9	5	1	0	2	16	1	0	2	0	0	1	1	0	3	21	8	0	7	.250
Totals		1170	169	293	156	42	2	38	453	115	4	34	7	24	26	5	3	255	893	345	34	270	.250

2021 RECORD WHEN...

**2021 Baylor Softball
Games Summary for Baylor (as of May 11, 2021)
(All games)**

Score by innings	1	2	3	4	5	6	7	8	9	Total
Baylor	27	36	35	44	23	23	14	3	1	206
Opponents	23	36	25	20	17	26	22	0	0	169

Record when ...

Overall	27-18	After 4 leading	20-2
Conference	8-9 trailing	3-15
Non-Conference	19-9 tied	4-1
Home games	12-8	After 5 leading	19-2
Away games	14-9 trailing	3-16
Neutral site	1-1 tied	2-0
Day games	20-12	After 6 leading	22-0
Night games	7-6 trailing	0-14
vs Left starter	9-3 tied	2-1
vs Right starter	18-15		
1-Run games	6-0	Hit 0 home runs	16-12
2-Run games	2-5	... 1 home run	6-5
5+Run games	12-8	... 2+ home runs	5-1
Extra innings	2-0		
Shutouts	4-5	Opponent 0 home runs	20-5
	 1 home run	3-3
Scoring 0-2 runs	2-10 2+ HRs	4-10
..... 3-5 runs	10-8		
..... 6-9 runs	11-0	Made 0 errors	15-8
..... 10+ runs	4-0 1 error	10-7
	 2+ errors	2-3
Opponent 0-2 runs	23-0		
..... 3-5 runs	3-5	Opp. made 0 errors	7-14
..... 6-9 runs	1-10 1 error	13-4
..... 10+ runs	0-3 2+ errors	7-0
Scored in 1st inning	12-3	Out-hit opponent	22-3
Opp. scored in 1st	8-8	Out-hit by opponent	3-14
Scores first	21-5	Hits are tied	2-1
Opp. scores first	6-13		

Record when team scores:

Runs	0	1	2	3	4	5	6	7	8	9	10+
W-L	0-5	0-4	2-1	5-2	1-3	4-3	3-0	3-0	4-0	1-0	4-0

Record when opponent scores:

Runs	0	1	2	3	4	5	6	7	8	9	10+
W-L	4-0	10-0	9-0	1-1	0-2	2-2	1-2	0-7	0-1	0-0	0-3

Record when leading after:

Inn.	1	2	3	4	5	6
W-L	11-2	18-2	19-3	20-2	19-2	22-0

Record when trailing after:

Inn.	1	2	3	4	5	6
W-L	4-7	3-12	2-13	3-15	3-16	0-14

Record when tied after:

Inn.	1	2	3	4	5	6
W-L	12-9	6-4	6-2	4-1	2-0	2-1

Current losing streak: 3
 Longest winning streak: 6
 Longest losing streak: 7

Home attendance : 7460 (20 dates avg = 373)
 Away attendance : 5855 (24 dates avg = 243)
 Total attendance: 13315 (44 dates avg = 302)

RADIO / TV ROSTER



2
TAYLOR STRAIN
OF | L/R | FR
ROBINSON, TEXAS



4
EMILY HOTT
UTL | L/R | FR
EDMOND, OKLA.



5
SIDNEY MANSELL
P | R/R | JR
BELTON, TEXAS



7
GIA RODONI
P | R/R | SR
LOS BANOS, CALIF.



8
HANNAH SMITH
UTL | R/R | JR
BEAUMONT, TEXAS



9
LOU GILBERT
OF | L/R | SO
KANSAS CITY, MO.



10
TAYLOR ELLIS
INF/C | R/R | SR
WACO, TEXAS



12
KENDALL CROSS
INF | L/L | SO
FRIENDSWOOD, TEXAS



13
HANNAH THOMPSON
C | R/R | JR
DICKINSON, TEXAS



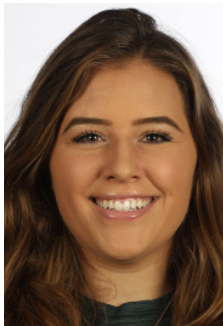
15
SYDNEY COLLAZOS
C | R/R | FR
GEORGETOWN, TEXAS



18
CAMPBELL SELMAN
UTIL | R/R | FR
LUFKIN, TEXAS



19
MAREN JUDISCH
P | R/R | FR
WAUKEE, IOWA



20
ASHLEY MARCHAND
C | R/R | JR
HAYMARKET, VA.



22
ANA WATSON
OF | L/R | SO
HEWITT, TEXAS



23
ALYSSA AVALOS
OF | L/L | JR
RANCHO CUCAMONGA, CALIF.



25
NICKY DAWSON
INF | L/R | SR
BATON ROUGE, LA.



34
GOOSE MCGLAUN
INF | R/R | SR
HUMBLE, TEXAS



41
ALIYAH BINFORD
P/INF | R/R | FR
NEW BRAUNFELS, TEXAS



44
JOSIE BOWER
OF | L/R | SO
SPRING, TEXAS



45
KATIE ELLINGTON
C | L/L | FR
TOMBALL, TEXAS



55
MADDISON KETTLER
OF | L/R | JR
WEST, TEXAS



99
ZADIE LAVALLEY
C | R/R | FR
CHOCTAW, OKLA.



SOFTBALL CHAMPIONSHIP

FRIDAY, MAY 14 GAMES 1 - 6

POOL A

GAME 2 • 11:00 AM • BIG 12 NOW
INTEGRIS FIELD

VS

#4 - BAYLOR

#6 - TEXAS TECH

WINNER

GAME 2 WINNER

SCORE

00-00

POOL A STANDINGS

#1 - OKLAHOMA 0-0
#4 - BAYLOR 0-0
#6 - TEXAS TECH 0-0

GAME 3 • 2:00 PM • BIG 12 NOW
OGE ENERGY FIELD

VS

#1 - OKLAHOMA

#4 - BAYLOR

GAME 3 WINNER

00-00

GAME 6 • 7:30 PM • BIG 12 NOW
OGE ENERGY FIELD

VS

#1 - OKLAHOMA

#6 - TEXAS TECH

GAME 6 WINNER

00-00

POOL B

GAME 1 • 11:00 AM • ESPN
OGE ENERGY FIELD

VS

#2 - OSU

#3 - TEXAS

GAME 1 WINNER

00-00

GAME 4 • 2:00 PM • BIG 12 NOW
INTEGRIS FIELD

VS

#3 - TEXAS

#5 - IOWA STATE

GAME 4 WINNER

00-00

GAME 5 • 5:00 PM • BIG 12 NOW
OGE ENERGY FIELD

VS

#2 - OSU

#5 - IOWA STATE

GAME 5 WINNER

00-00

POOL B STANDINGS

#2 - OSU 0-0
#3 - TEXAS 0-0
#5 - IOWA STATE 0-0

SATURDAY, MAY 15 GAMES 7 - 9

GAME 7 • 10:30 AM • BIG 12 NOW
INTEGRIS FIELD

VS

POOL A 3RD PLACE

POOL B 3RD PLACE

GAME 7 WINNER

00-00

GAME 8 • 10:30 AM • BIG 12 NOW
OGE ENERGY FIELD

VS

POOL A 2ND PLACE

POOL B 2ND PLACE

GAME 8 WINNER

00-00

CHAMPIONSHIP GAME

GAME 9 • 3:00 PM • ESPN
OGE ENERGY FIELD

VS

POOL A 1ST PLACE

POOL B 1ST PLACE

GAME 9 WINNER

00-00

BIG 12 CHAMPION

#BIG12SB

ALL TIMES CENTRAL

DAY ONE MATCHUPS WILL FEATURE SEEDS 1-6.

POOL A 3RD PLACE AND POOL B 3RD PLACE WILL PLAY IN GAME 7.

POOL A 2ND PLACE AND POOL B 2ND PLACE WILL PLAY IN GAME 8.

POOL A 1ST PLACE AND POOL B 1ST PLACE WILL PLAY IN THE CHAMPIONSHIP GAME (GAME 9).