



# BAYLOR

Follow Baylor Softball on Twitter, Instagram and Facebook: @BaylorSoftball

## SOFTBALL GAME NOTES



GAMES 38-39

NR/NR **BAYLOR** (24-13, 5-4) vs. 1/1 **OKLAHOMA** (37-1, 15-0)

#SicEm



Tuesday, April 27 • 4PM CT • Waco, Texas | Gettner Stadium • Radio: 101.3 FM • Watch: ESPNU

Tuesday, April 27 • 6:30PM CT • Waco, Texas | Gettner Stadium • Radio: 101.3 FM • Watch: ESPNU

### SCHEDULE/RESULTS

DATE	BU	OPP	OPPONENT	TV	TIME
F21	18/23	25/20	Arkansas †	Cowboy Insider	L, 2-7
F21	18/23	-/-	McNeese State †	Cowboy Insider W	3-2 (9)
F24	21/23	-/-	UT Arlington	Big 12 Now on ESPN+	W, 6-1
F26	21/23	-/-	UConn #	Big 12 Now on ESPN+	W, 5-0
F26	21/23	-/-	Ole Miss #	Big 12 Now on ESPN+	L, 4-10
F27	21/23	-/-	Lamar #	Big 12 Now on ESPN+	W, 100-6
F27	21/23	-/-	UConn #	Big 12 Now on ESPN+	L, 3-7
F28	21/23	25/RV	Mississippi St.#	Big 12 Now on ESPN+	W, 10-6
M4	RV/RV	13/12	at Louisiana	ESPN+	W, 8-1
M6	RV/RV	-/-	vs. Tarleton St. \$	---	W, 5-1
M6	RV/RV	-/-	at Louisiana Tech \$	CUSA.tv	W, 3-1
M7	RV/RV	-/-	at Louisiana Tech \$	CUSA.tv	W, 3-2
M7	RV/RV	-/-	vs. Tarleton St. \$	---	W, 2-0
M11	RV/RV	9/11	at Arizona State	ASU Live Stream	L, 4-7
M12	RV/RV	-/-	vs. Northern Illinois %	---	W, 3-2
M12	RV/RV	-/-	at Grand Canyon %	GCU TV	W, 12-1 (5)
M13	RV/RV	-/-	vs. Northern Illinois %	---	W, 8-1
M13	RV/RV	-/-	at Grand Canyon %	GCU TV	W, 12-2
M14	RV/RV	9/11	at Arizona State	ASU Live Stream	W, 7-2
M16	RV/RV	-/-	Stephen F. Austin	Big 12 Now on ESPN+	W, 3-2
M20	RV/RV	-/-	Houston	Big 12 Now on ESPN+	L, 1-3
M21	RV/RV	-/-	Houston	Big 12 Now on ESPN+	W, 2-1
M23	RV/RV	-/-	at Sam Houston	ESPN+	W, 7-3
M26	RV/RV	-/-	at Texas Tech *	Big 12 Now on ESPN+	W, 5-2
M27	RV/RV	-/-	at Texas Tech *	Big 12 Now on ESPN+	W, 8-2
M28	RV/RV	-/-	at Texas Tech *	Big 12 Now on ESPN+	W, 5-2 (8)
A1	RV/25	-/-	at BYU	BYUtv	L, 1-4
A2	RV/25	-/-	at BYU (DH)	BYUtv	L, 5-7
A2	RV/25	-/-	at BYU (DH)	BYUtv	L, 5-7
A14	-/-	-/-	Texas St.	Big 12 Now on ESPN+	L, 5-7
A17	-/-	11/11	at Oklahoma St. *	Big 12 Now on ESPN+	L, 0-4
A17	-/-	11/11	at Oklahoma St. *	Big 12 Now on ESPN+	L, 1-5
A18	-/-	11/11	at Oklahoma St. *	ESPN2	L, 3-11 (6)
A21	-/-	-/-	Sam Houston St.	Big 12 Now on ESPN+	W, 8-0 (5)
A23	-/-	-/-	at Iowa State *	Big 12 Now on ESPN+	W, 9-5
A24	-/-	-/-	at Iowa State *	Big 12 Now on ESPN+	L, 4-6
A25	-/-	-/-	at Iowa State *	Big 12 Now on ESPN+	W, 4-1
A27	-/-	1/1	Oklahoma (DH) *	ESPNU	4PM
A27	-/-	1/1	Oklahoma (DH) *	ESPNU	6:30PM
A30	-/-	-/-	Kansas *	Big 12 Now on ESPN+	6:30PM
M1	-/-	-/-	Kansas *	Big 12 Now on ESPN+	2PM
M2	-/-	-/-	Kansas *	Big 12 Now on ESPN+	Noon
M7	-/-	-/-	at Texas *	---	6:30PM
M8	-/-	-/-	Texas *	Big 12 Now on ESPN+	6:30PM
M9	-/-	-/-	Texas *	Big 12 Now on ESPN+	1PM
M14-15	-/-	-/-	Big 12 Tournament	---	TBD

† - Cowgirls Classic (Lake Charles, La.)  
 # - Lone Star State Invitational (Waco, Texas)  
 \$ - Louisiana Tech Invitational (Ruston, La.)  
 % - Lopes Up Classic (Phoenix, Ariz.)  
 \* - Big 12 Conference game  
 Home games in bold  
 All times central and subject to change

### STORY LINES

- Baylor opens a five-game home stand this week as the Lady Bears host No. 1 Oklahoma in a doubleheader slated to begin at 4 p.m. on Tuesday. Both games will be nationally broadcasted on ESPNU with Beth Mowins (pyp) and Michele Smith (analyst) on the call.
- BU's last win over the Sooners came on April 23, 2017, in Norman. Baylor won the first game of a doubleheader, 4-3, as **Gia Rodoni** took the win in the circle as she allowed three runs off five hits with two strikeouts in 5.0 innings of work. Baylor's last win over Oklahoma in Waco was April 13, 2014, by a final of 8-6.
- Since 1996, Baylor is 1-12 against No. 1 teams. That lone win came on Feb. 8, 2009, at Florida (1-0). BU hasn't faced a top-ranked team since facing Oklahoma on April 7, 2013.
- Glenn Moore** is one win away from recording 800 at Baylor. His is the program's all-time wins leader (799) and is the active wins leader across all sports for Baylor Athletics.
- Lou Gilbert** and **Emily Hott** are making a splash in Big 12 play as the two are among the top 10 in the conference in multiple categories in league action.
- Hott** has reached base safely in 24 straight games. That streak ranks eighth in program history.
- Aliyah Binford** (3/16) and **Rodoni** (3/30) have each been named the Big 12 Pitcher of the week this season, marking the first time since 2016 and the fourth season in program history (2004, 2014, 2016, 2021) that multiple Baylor pitchers have earned the weekly conference honors.
- Gilbert** moved into the leadoff spot with **Nicky Dawson's** injury. Gilbert has both the short game and power as she has 42 hits to lead the team. Of those 42 hits, 15 of them are for extra bases (10 doubles, 1 triple, 4 home runs) and 12 of them are bunt singles.
- Alyssa Avalos** made the #SCTop10 as her diving catch in center field from Sunday's series finale at No. 11 Oklahoma State came in at No. 6.
- Dawson** is Baylor's all-time leader in career triples with 12 after ripping one to left center field against Louisiana Tech on March 7. The fifth-year senior outfielder now has five triples this season, a mark that ties her for first nationally. **Dawson** is now tied for second in program history for triples in a season alongside Kyla Walker (2017), Carrie Leerberg (2004) and Kelly Osburn (2005). Harmony Schwethelm had six triples in 2005.
- After 20 seasons as an assistant coach for the Lady Bears, **Mark Lumley** retired in October before he passed away in December after his fourth bout with cancer. The Baylor players and coaching staff will all be wearing blue ribbons in his honor. This season is for Lum.

### BAYLOR (24-13, 5-4)

Head Coach: Glenn Moore (25th season)  
 Career Record: 938-432  
 2021 Leaders  
 Batting Average: Lou Gilbert (.359)  
 2B: Lou Gilbert (10)  
 HR: Goose McGlaun (5)  
 RBI: Goose McGlaun (24)

### OKLAHOMA (37-1, 15-0)

Head Coach: Patty Gasso (27th season)  
 Career Record: 1317-338-2  
 2021 Leaders  
 Batting Average: Jayda Coleman, Jocelyn Alo (.505)  
 2B: Tiare Jennings (13)  
 HR: Jocelyn Alo (24)  
 RBI: Jocelyn Alo (66)

### SERIES INFO

Oklahoma leads, 63-13  
 Waco: OU, 18-8  
 Norman, Okla.: OU, 26-7  
 Neutral: OU, 16-1

### POTENTIAL STARTING LINEUP

#	P	NAME	YR	AVG	R	H	2B	3B	HR	RBI
99	C	Zadie LaValley	Fr.	.253	5	20	6	0	2	19
34	1B	Goose McGlaun	Fr.	.336	25	39	9	1	5	24
4	2B	Emily Hott	Fr.	.322	28	28	6	0	3	15
10	3B	Taylor Ellis	Sr.	.288	12	30	5	1	2	15
41	SS	Aliyah Binford	Fr.	.314	13	32	8	0	3	18
8	CF	Hannah Smith	Jr.	.194	9	6	0	0	1	3
9	LF	Lou Gilbert	So.	.359	27	42	10	1	4	19
55	RF	Maddison Kettler	Jr.	.288	9	21	3	1	0	11
44	DH	Josie Bower	So.	.318	14	28	6	0	0	14
#	P	NAME	YR	ERA	W-L	IP	SO	BB	B/AVG	
7	R	Gia Rodoni	Sr.	3.30	9-6	106.0	101	32	.286	
5	R	Sidney Holman-Mansell	Jr.	3.29	7-3	66.0	69	31	.199	

**PRONUNCIATIONS**

<b>GIA RODONI</b>	<b>GEE-uh ruh-DOE-nee</b>
Sydney <b>COLLAZOS</b>	<b>co-YAH-sos</b>
Maren <b>JUDISCH</b>	<b>JOO-dish</b>
Ashley <b>MARCHAND</b>	<b>mar-SHAWN</b>
<b>ANA</b> Watson	<b>ON-uh</b>
Alyssa <b>AVALOS</b>	<b>AH-vuh-los</b>
Goose <b>McGLAUN</b>	<b>mc-GLON</b>
<b>ALIYAH</b> Binford	<b>uh-LEE-uh</b>
Josie <b>BOWER</b>	<b>like power</b>

**TEAM HONORS**

No. 4 in Preseason Big 12 Coaches Poll

**INDIVIDUAL SEASON HONORS (2021)****Aliyah Binford**

LA Tech Invitational All-Tournament Team

Big 12 Pitcher of the Week (3/16)

**Nicky Dawson**

LA Tech Invitational All-Tournament Team

**Lou Gilbert**

LA Tech Invitational All-Tournament Team

**Goose McGlaun**

Senior CLASS Award Candidate

**Gia Rodoni**

LA Tech Invitational All-Tournament Team

Big 12 Pitcher of the Week (3/30)

**BAYLOR IN THE RANKINGS**

WEEK	W/L	ESPN	NFCA
Preseason	0-0	18	22
Week 1	0-0	18	23
Week 2	1-1	21	23
Week 3	3-2	RV	RV
Week 4	5-0	RV	RV
Week 5	5-1	RV	RV
Week 6	2-1	RV	RV
Week 7	4-0	RV	25
Week 8	0-3	NR	RV
Week 9	0-0	NR	NR
Week 10	0-4	NR	NR
Week 11	4-1		

**QUICK HITS**

- Baylor will play seven opponents ranked in ESPN's preseason Top 25, including four opponents in ESPN's Top 10.
- Baylor welcomes back everybody but one member of the 2020 team after the season was cut short due to the COVID-19 pandemic and seniors were awarded an extra year of eligibility.
- BU was picked to finish fourth in the Big 12 preseason coaches poll behind Oklahoma, Texas and Oklahoma State.
- BU started out the 2021 season ranked in the top 25 - No. 18 (ESPN.com/USA Softball Collegiate Top 25 Poll), No. 22 (NFCA Top 25 Coaches Poll), No. 19 (D1Softball) and No. 23 (Softball America). This is the 14th time the Lady Bears have begun a season ranked in the preseason Top 25 in program history, all coming under **Moore**.

**MOORE ERA HIGHLIGHTS**

- **Glenn Moore** is coaching his 1,190th, 1,191st and 1,192nd (799-390) games at Baylor this week. His .676 winning percentage is best in BU history and he's the program's all-time wins leader.
- **Moore** recorded his 900th win overall with a 10-2 (5) victory over Grand Canyon in Waco (2/14/20).
- **Moore's** 800th career win came with a 9-3 win over McNeese State in Waco (2/22/18).
- **Moore** notched his 700th win at Baylor in the final game of the Tucson Super Regional, punching Baylor's ticket into the Women's College World Series (5/28/17).
- All but one of his 100-win milestones have come at Baylor, with his first 100th game coming during his tenure at LSU with a 6-5 win over Auburn (3/17/00).
- In **Moore's** 21 seasons as Baylor head coach, BU has cracked the Top 25 polls at some point in the season in every one.
- **Moore** has coached 86 of Baylor's 91 All-Big 12 selections and 12 of Baylor's 13 All-Americans.
- Baylor has had 9 players drafted into the National Professional Fastpitch (NPF) draft.
- Baylor has placed at least six selections to the conference's academic honors for 13 straight seasons and five or more for 18 straight years.
- With a career record of 938-432 over 25 seasons as a collegiate head coach, **Moore** now ranks 17th among active coaches in winning percentage and 22nd in total victories. He stands as the active wins leader across all sports for Baylor athletics (799).

**FOR LUM**

- **Mark Lumley**, who helped Baylor softball make 13 NCAA regionals and four trips to the Women's College World Series in 20 years as an assistant coach, passed away in December after his fourth bout with cancer.
- **Lum**, a 1985 graduate of the University of Arizona, was inducted into the Flowing Wells High School Athletic Hall of Fame in 2014.
- During his two decades at Baylor, **Lum** coached multiple All-American hitters.
- Baylor Softball will be playing this season for him. The student-athletes and staff will each wear blue ribbons in honor of **Lum**.

**2021 BAYLOR SOFTBALL ROSTER**

No.	Name	B/T	Pos.	Ht.	Yr.	Exp.	Hometown/HS/Last College
2	Taylor Strain	L/R	OF	5-3	Fr.	1Yr	Robinson, Texas / Robinson HS
4	Emily Hott	L/R	UTL	5-8	Fr.	2Yr	Edmond, Okla. / Deer Creek HS
5	Sidney Holman-Mansell	R/R	P	5-10	Jr.	3Yr	Belton, Texas / Belton HS / ACU
7	Gia Rodoni	R/R	P	5-7	Sr.	6Yr	Los Banos, Calif. / Pacheco HS
8	Hannah Smith	R/R	UTL	5-10	Jr.	4Yr	Nederland, Texas / Nederland HS
9	Lou Gilbert	L/R	UTL	5-7	So.	3Yr	Kansas City, Mo. / Staley HS
10	Taylor Ellis	R/R	INF	5-8	Sr.	5Yr	Waco, Texas / Midway HS
12	Kendall Cross	L/L	INF	5-6	So.	3Yr	Friendswood, Texas / Friendswood HS
13	Hannah Thompson	R/R	C	5-7	Jr.	4Yr	Dickinson, Texas / Dickinson HS
15	Sydney Collazos	R/R	C	5-5	Fr.	1Yr	Georgetown, Texas / Georgetown HS
18	Campbell Selman	R/R	INF	5-8	Fr.	2Yr	Lufkin, Texas / Hudson HS
19	Maren Judisch	R/R	P	5-9	Fr.	1Yr	Waukee, Iowa / Des Moines Christian HS
20	Ashley Marchand	R/R	C	5-9	Jr.	4Yr	Haymarket, Va. / Battlefield HS
22	Ana Watson	L/R	OF	5-4	So.	3Yr	Hewitt, Texas / Reicher Catholic HS
23	Alyssa Avalos	L/L	OF	5-6	Jr.	4Yr	Rancho Cucamonga, Calif. / St. Lucy's Priory HS
24	Madison Lindsey	L/L	P	5-5	So.	3Yr	Kingwood, Texas / Kingwood HS
25	Nicky Dawson	L/R	INF	5-7	Sr.	5Yr	Baton Rouge, La. / Parkview Baptist HS / LSU
34	Goose McGlaun	R/R	INF	5-8	Sr.	5Yr	Humble, Texas / Atascocita HS
41	Aliyah Binford	R/R	P/INF	5-7	Fr.	2Yr	New Braunfels, Texas / Canyon HS
44	Josie Bower	L/R	OF	5-7	So.	3Yr	Spring, Texas / Northland Christian HS
45	Katie Ellington	L/L	C	5-9	Fr.	2Yr	Tomball, Texas / Tomball HS
55	Maddison Kettler	L/R	OF	5-2	Jr.	4Yr	West, Texas / West HS
99	Zadie LaValley	R/R	C	5-8	Fr.	1Yr	Choctaw, Okla. / Carl Albert HS

**COACHING & SUPPORT STAFF**

Head Coach:	Glenn Moore (Northwestern State, 1993), 21st season at Baylor
Associate Head Coach:	Britni Sneed Newman (LSU, 2002), 18th season at Baylor
Assistant Coach:	Steve "Hoot" Johnigan (Texas A&M, 1989), 1st season at Baylor
Volunteer Assistant Coach:	Meagan Diaz (Baylor, 2011), 1st season at Baylor
Director of Operations:	Jon Graham (Concordia Texas), 2013, 7th season at Baylor

**RECORD WATCH**

- **Nicky Dawson**, already Baylor's all-time leader with 12 triples, is a triple away from tying Harmony Schwethelm (2005) with six in a single season.
- **Goose McGlaun** is sixth all-time in BU history with 34 homers. She's also 10th all-time with 36 doubles and sixth with 134 RBI. She's an RBI away from tying Sarah Smith (2013-16) for fifth. McGlaun also has 50 career multi-hit games.
- **Gia Rodoni** has 639 strikeouts in her career and is currently fourth in that category.
- **Glenn Moore** is one win away from No. 800 at Baylor.

**ONE-TWO PUNCH**

- Lou Gilbert and Emily Hott are making some noise through Big 12 play in the top two spots in the lineup.
- Gilbert and Hott are No. 4 and No. 6 with .484 and .458 averages respectively against league foes.
- Gilbert is tied for sixth with 15 hits, tied for fifth with three stolen bases, tied for fourth with four doubles, tied for six with 28 total bases, fifth with a .556 OBP and fifth with a .903 slugging percentage.
- Hott is tied for seventh with seven walks, third with a .581 OBP and seventh with a .833 slugging percentage.

**AME-ING FOR THE SERIES**

- Baylor clinched its second Big 12 series of the season at Iowa State.
- **Lou Gilbert** put on a clinic in the first game as she was a triple short of the cycle with a career-best 4-for-4 showing at the plate with a bunt single, a double and a home run to boot.
- The top of the order (**Gilbert**, **Emily Hott** and **Goose McGlaun**) were on fire the first two games of the series for BU. The trio combined for a .619 average, 13 hits, nine RBI, 10 runs scored, six extra-base hits and they each had a solo homer on Saturday.
- **Gia Rodoni** capped off the weekend with a gem on Sunday. She threw her seventh complete game of the season and gave up just one run off seven hits with seven strikeouts and no walks.

**GET THE BROOMS**

- For the eighth time in program history, and the first time since 2016, Baylor opened Big 12 play 3-0 with a sweep at Texas Tech March 26-28.
- **Lou Gilbert** led the way at the plate in Lubbock as she hit .545 with a pair of doubles and four RBI to go with a .615 OBP. **Taylor Ellis** also had a good opening weekend with a .455 average and a team-high eight assists from the hot corner.
- **Gia Rodoni** and **Sidney Holman-Mansell** did most of the work in the circle for BU, combining for 18 strikeouts compared to two walks in 18.2 innings pitched.

**G'S DEALIN'**

- **Gia Rodoni** was named the Big 12 Pitcher of the Week (3/30) after going 3-0 on the week as she picked up the midweek win against Sam Houston before putting in some stellar work to help the Lady Bears get the sweep at Texas Tech over the weekend.
- The Los Banos, Calif., native picked up her 600th career strikeout in Friday's contest as she finished the week with a whopping 21 Ks compared to two walks. She gave up three earned runs all week through 18 innings of work. In Sunday's thrilling extra-inning win in Lubbock, Rodoni matched her career high with eight innings pitched as she gave up one earned run off six hits with six strikeouts.
- This is the eighth weekly honor from the conference for Rodoni and first since Feb. 25, 2020. Her first six nods all came in 2018 which marked a program record for single-season honors and tied for third-most in a single season by a Big 12 pitcher. Rodoni is now tied for ninth in Big 12 history with her eight weekly honors.

**OH SUGAR**

- After leading BU with a .429 average in a shortened 2020 season, **Maddison Kettler** got off to a slow start as the outfielder was hitting .071 nine games into the year. A two-hit game against Tarleton State on March 6 seemed to get her going as she hit .517 since then for a .372 overall average through March 23.
- From **Kettler** is currently on a 13-game streak where she's reached base safely. From March 7 to March 23, she hit a whopping .565 with a .783 slugging percentage and a .636 OBP to go with three doubles, a triple, eight RBI and four multi-hit games. Most recently, **Kettler** tied her career high with three hits at Sam Houston (3/23) when she went 3-for-4 at the plate with a double and three RBI.
- Through this 13-game streak, she's the lone Bear hitting .400 as she's batting .441 with 15 hits, four of which are of the extra base variety, with eight RBI, five walks, a .513 OBP and a .588 slugging percentage.

**BINFORD'S BIG 12 NOD**

- **Aliyah Binford** was named the Big 12 Pitcher of the Week (3/16) as she took over in the circle with the bases loaded and one out in Sunday's game at No. 9 Arizona State and held one of the most powerful offenses in the country scoreless on their home field. Binford kept the Sun Devils off balance with her offspeed and induced a slew of groundouts to pick up the win. The right-hander gave up four hits through 5.2 innings of work.
- It marked her second win of the week as she also threw four innings in a 10-run win at GCU the day before. Against the Lopes, Binford also hit in the clean-up spot and nearly hit for the cycle as she only lacked a triple in a 3-for-5 showing at the plate with five RBI.



**GLENN MOORE**  
HEAD COACH  
21st SEASON

**THE MOORE FILE****PERSONAL**

**Birthplace:** Liberty, Miss.

**Family:** Wife, Janice; daughter, Jacey, son, Ty

**EDUCATION**

**College:** Northwestern (La.) State, 1993

**COACHING EXPERIENCE****Assistant Coach**

Northwestern State 1990-1992

LSU 1997-1998

**Head Coach**

Amite (Miss.) School Center 1994-1995

William Carey (Miss.) 1995-96

LSU 1999-2000

**Baylor 2001-present**

**THE MOORE WORKSHEET**

YEAR	SCHOOL	OVERALL	CONF.
1996	William Carey	22-17	n/a
1998	LSU	2-2	n/a
1999	LSU <sup>1,3</sup>	56-10	27-3
2000	LSU <sup>1,3</sup>	59-13	26-4
2001	Baylor	38-22	7-9
2002	Baylor	46-18	10-8
2003	Baylor	31-29	3-15
2004	Baylor <sup>1</sup>	48-17	11-6
2005	Baylor <sup>1</sup>	51-14	11-7
2006	Baylor <sup>1</sup>	38-22	12-6
2007	Baylor <sup>1,2,3</sup>	51-16	14-3
2008	Baylor	23-22	4-13
2009	Baylor <sup>1,2,3</sup>	40-22	11-7
2010	Baylor	28-25	6-12
2011	Baylor <sup>1,2</sup>	47-15	11-7
2012	Baylor <sup>1</sup>	34-22	10-14
2013	Baylor <sup>1</sup>	42-17	10-8
2014	Baylor <sup>1,2</sup>	49-16	13-5
2015	Baylor <sup>1</sup>	41-17	12-6
2016	Baylor <sup>1</sup>	45-14	13-4
2017	Baylor <sup>1,2</sup>	48-15	13-5
2018	Baylor <sup>1</sup>	38-18	12-6
2019	Baylor	18-31	2-16
2020	Baylor	19-5	N/A
2021	Baylor	24-13	5-4
<b>TOTAL</b>	<b>25th season</b>	<b>938-432</b>	<b>256-172</b>
<b>BAYLOR</b>	<b>21st season</b>	<b>799-390</b>	<b>204-165</b>

<sup>1</sup> NCAA Tournament Appearances | <sup>2</sup> WCWS Appearances | <sup>3</sup> Conf. Championship

**ESPN/USA SOFTBALL POLL (4/20)**

1. Oklahoma .....	30-0
2. UCLA .....	22-2
3. Alabama .....	31-5
4. Florida .....	30-4
5. Oregon.....	27-5
6. Washington.....	31-5
7. Arizona .....	24-5
8. Texas .....	31-3
9. Florida State.....	27-6
10. Arkansas .....	33-5
11. Oklahoma State.....	32-5
12. Kentucky.....	28-7
13. Arizona State .....	25-10
14. Virginia Tech .....	25-6
15. LSU .....	24-13
16. Tennessee.....	28-6
17. Louisiana.....	31-6
18. Clemson .....	26-4
19. Missouri .....	29-9
20. Georgia.....	25-8
21. Duke .....	27-9
22. Michigan .....	16-4
23. Minnesota .....	19-5
24. James Madison .....	19-1
25. UCF .....	29-9

**ALL GAS, NO BREAKS**

- The Baylor offense was relentless over the weekend in Arizona. In total, the Lady Bears outscored their opponents, 46-15, and led the way in hits, 61-37. Of those 61 hits, 23 of them went for extra bases.
- In the first game at ASU, BU never quit fighting. **Nicky Dawson** set the tone with a leadoff triple and later doubled to add an RBI to her name.
- Down by five in the top of the seventh, the Lady Bears were at their last strike three-straight times but continued to battle. **Taylor Ellis** fought through a six-pitch at-bat before drawing a walk to be on base for **Zadie LaValley's** home run. **Emily Hott** followed with a double.
- After a sluggish start to the walkoff win over Northern Illinois on Friday, the Lady Bears made quick work in a run-rule victory over GCU with 12 runs off 11 hits, including a nine-run fourth inning.
- On Saturday, Baylor continued to put the pedal down with 16 hits against NIU, marking the most for BU in a game since hitting 17 against Mississippi Valley State on Feb. 17, 2018. The Lady Bears followed up that performance with 13 hits against GCU for 29 on the day.
- In the road trip finale with the rematch at ASU, Baylor continued to get things done in the box. A six-run sixth inning was ignited by back-to-back bunt singles by **Dawson** and **Lou Gilbert** before a couple of walks and hit batters brought runs home. Big swings by **Ellis** and **Maddison Kettler** added to BU's total.

**BOMBS AWAY**

- Entering the road trip in Arizona, Baylor had only three home runs through 13 games. In a six-game span, the Lady Bears more than tripled that total as they crushed seven homers on the weekend.
- **Zadie LaValley** got things going with her first career home run in the top of the seventh at No. 9 Arizona State on March 11. The freshman sent a shot that was foul by mere inches down the right field line before she straightened things out on the next pitch with a no-doubter over the right field wall.
- In her next at-bat (she didn't play vs. NIU on March 12) **LaValley** went yard again, this time at GCU.
- Between **LaValley** bombs, **Goose McGlaun** picked a great time to launch her second home run of the season. With the game tied at two against Northern Illinois on Friday, **McGlaun** went opposite field with a leadoff solo shot to walk off a win for the Lady Bears.
- **Ana Watson** joined the home run party on Friday with a three-run shot against the Lopes, marking her second career homer.
- The Lady Bears added three more home runs in the Lopes Up Classic finale at GCU. **Aliyah Binford** got things started with her first home run of the season in the first inning before **Lou Gilbert** followed later on in the game with a two-run homer to left field. **Hannah Smith** topped it off with her first career home run.
- **Binford** nearly messed around and hit for the cycle as she recorded a single, double and homer against GCU.

**SHE'S FROM LOUISIANA**

- **Nicky Dawson** must have been excited to play in her home state as she went off during BU's Louisiana Road Trip March 4-7. She finished the week hitting a team-high .421 with eight hits, a triple, two RBI and 5-for-5 in stolen base attempts.
- Against No. 13 Louisiana, **Dawson** matched her career high going 4-for-5 at the plate. She started things off for the Lady Bears with a bunt single, stole second and later scored off an RBI by **Josie Bower**. An inning later, she hit an RBI single down the right field line and stole second again. **Dawson** led off a six-run fifth inning for BU with a single to center field and scored off an double by **Lou Gilbert**. In her last at-bat, **Dawson** singled to second.
- In Ruston, **Dawson** continued to deliver for BU. She hit .286 and was 3-for-3 in stolen base attempts.
- Of course, **Dawson** would set Baylor's all-time record in career triples with her 10th overall while in Louisiana. In Sunday morning's contest vs. Louisiana Tech, **Dawson** ripped a shot to deep left center field and motored around the bases and safely made it to third for her third triple of the season and 10th of her career.

**BACK-TO-BACK**

- Baylor racked up back-to-back wins over ranked foes to move to 2-1 against opponents in the Top 25.
- After topping No. 25 Mississippi State, 10-6, at home, the Lady Bears downed the 13th-ranked Ragin' Cajuns at their place, 8-1.
- The Bulldogs came to Getteman Stadium ranked in the top 20 in the country averaging 7.71 runs per game. BU held the power-hitting Mississippi State team to six runs and scored a season-high 10 runs against visiting State.
- In Lafayette four days later, the Lady Bears ran Louisiana's ace out after four innings after they recorded five runs off eight hits against her. In the fifth inning alone, BU exploded for six runs off six hits as **Lou Gilbert**, **Goose McGlaun** and **Taylor Ellis** each doubled in the frame. It marked the worse loss by Louisiana at home since falling 9-0 (6) to then-No. 2 Florida on Feb. 17, 2018.

**GOING YARD ON OPENING DAY**

- **Taylor Ellis** blasted a two-run home run in her first at-bat of the 2021 season vs. Arkansas. It marked the 14th season under **Moore** that a Lady Bear hit a homer on Opening Day.
- It marked the second-straight season for **Ellis** to hit a bomb on Opening Day as she did so against Louisville a year ago. She is one of four Lady Bears in the **Moore** era to go yard in consecutive season openers: Linsey Hays (2013, 14, 15), Shelby Friudenberg (2015, 16) and Ashley Monceaux (2006, 07).



**SUPER (SUPER) SENIORS**

- **Nicky Dawson, Taylor Ellis, Goose McGlaun and Gia Rodoni** return to Baylor after the NCAA granted 2020 seniors an extra year of eligibility.
- **Dawson** only played 10 games a year ago as she dealt with an injury. She returns for 2021 at full strength. Dating back to the 2019 season, **Dawson** has reached base safely in 13-straight games. A lefty slapper, **Dawson** makes great use of her speed as she is two triples away from tying Baylor's program record.
- **Ellis** has played all over the field during her time at Baylor. After going back-and-forth between catcher and shortstop in recent years, expect **Ellis** to take over at an entirely new position - third base. She's got the arm strength and ability to handle the hot corner.
- **McGlaun** is currently sixth in Baylor history with 29 career home runs and seventh with 110 career RBI. The super-senior is expected to hold down her usual clean-up spot in the line-up as nearly half of her hits went for extra bases a year ago.
- **Rodoni** is back for her sixth year in a Baylor uniform. **Rodoni**, who finished 2020 with a 1.15 ERA, is expected to continue to rise in the BU record books. Already top 10 in nearly every category, the Los Banos, Calif., native looks to build off a strong 2020 campaign that saw her throw her fifth-career no-hitter and barely miss the first perfect game in program history in her final appearance of the season at Houston.

**ALL CLASS**

- **McGlaun** was named as one of 30 candidates among NCAA softball student-athletes to be considered for the 2021 Senior CLASS Award, recognizing excellence both on and off the field.
- An acronym for Celebrating Loyalty and Achievement for Staying in School, the Senior CLASS Award focuses on the total student-athlete and encourages students to use their platform in athletics to make a positive impact as leaders in their communities.
- **McGlaun** is the fourth selection to the preliminary list by a Lady Bear, joining Carlee Wallace, Heather Stearns and Kaitlyn Thumann. Thumann earned first team All-America honors as a top-five finalist, while Stearns was named to the Top 10, garnering second team recognition.

**PRIVATE SCHOOLS IN THE WCWS**

- Baylor's four appearances in the Women's College World Series places the Lady Bears tied for third all-time among private schools.
- The Lady Bears are the only private school to make the WCWS since 2008, doing so three times over that period (2011, 2014, 2017).
- Since 2000, Baylor leads all private schools with four appearances, with the next closest school being DePaul with three.

**MOST WCWS APPEARANCES BY PRIVATE SCHOOLS**

School	#	Years
1. Northwestern	5	(1984, 1985, 1986, 2006, 2007)
Creighton	5	(1969, 1980, 1992, 1997, 1998)
3. Baylor	4	(2007, 2011, 2014, 2017)
DePaul	4	(1999, 2000, 2005, 2007)
4. Lehigh	3	(1984, 1985, 1988)
5. Tennessee	2	(1995, 1996)
Notre Dame	2	(2001, 2004)

**GOOD TO BE HOME**

- Baylor is in its 22nd full season of play at Getterman Stadium, with the Lady Bears securing a winning record in all but one full competition season since its doors were opened in 1999.
- Baylor recently announced its attendance policy for the 2021 softball season at Getterman Stadium. With capacity capped at 300, no season or single-game tickets will be sold this season. Home and visitor student-athletes will receive a limited number of complimentary tickets. After an allotment of approximately 50 tickets is held for Baylor students, the remaining tickets will be given to members of the Diamond Club on a first-come, first-served basis by emailing athletic.ticketoffice@baylor.edu. Those who receive tickets are required to follow CDC guidelines, wearing masks at all times and practicing social distancing.
- Their first home game Getterman Stadium will take place Feb. 24 as Baylor hosts UT Arlington.
- In 2019, brand-new turf was installed on the field by GeoSurfaces, and new LED lights replaced the previous stadium fixtures.
- In 2020, Baylor installed a new video board. Daktronics, who has done every video board on campus with the exception of the one inside the Ferrell Center, did the renovations as the old scoreboard as be replaced with LED panels. It measures 48 feet by 12 feet. The brick columns on either side of the board will remain in keeping with Baylor's beautiful campus, and lighted letters that read Getterman Stadium are up above.
- Named for Sue and the late Ted Getterman, the stadium is considered one of the most premier softball venues in the nation. At the time, their donation stood as the largest single donation ever to a Baylor women's athletics program.
- When President George W. Bush visited the Western White House in nearby Crawford, Texas, during the summer months of his presidency, members of his staff and Secret Service agents often used Getterman Stadium for pick-up games.

**USA TODAY/NFCA POLL (4/20)**

1. Oklahoma	30-0
2. UCLA	22-2
3. Alabama	31-5
4. Oregon	27-5
5. Florida	30-4
6. Washington	31-5
7. Texas	31-3
8. Arizona	24-5
9. Florida State	27-6
10. Arkansas	33-5
11. Oklahoma State	32-5
12. Kentucky	28-7
13. Arizona State	25-10
14. Louisiana	31-6
15. Virginia Tech	25-6
16. LSU	24-13
17. Clemson	26-4
18. Missouri	29-9
19. Tennessee	28-6
20. Georgia	25-8
21. Duke	27-9
22. Michigan	16-4
23. UCF	29-9
24. Minnesota	19-5
25. Wichita State	28-5

**MISCELLANEOUS STATISTICS**

Current Streak.....	Won 1
Current Home Streak.....	Won 1
Current Road/Neutral Streak.....	Won 1
Current Nonconference Streak.....	Won 1
Current Conference Streak.....	Won 1
Last Win.....	April 25 at Iowa State (4-1)
Last Home Win.....	April 21 vs. Sam Houston (8-0)
Last Away Win.....	April 25 at Iowa State (4-1)
Last Loss.....	April 14 vs. Texas State (5-7)
Last Home Loss.....	April 14 vs. Texas State (5-7)
Last Away Loss.....	April 24 at Iowa State (4-6)

**ROSTER BREAKDOWN**

**BY CLASS**

**Senior (4)**

Gia Rodoni, Taylor Ellis, Nicky Dawson, Goose McGlaun

**Junior (6)**

Sidney Holman-Mansell, Maddison Kettler, Hannah Smith, Hannah Thompson, Ashley Marchand, Alyssa Avalos

**Sophomore (5)**

Lou Gilbert, Kendall Cross, Ana Watson, Madison Lindsey, Josie Bower

**Freshman (8)**

Katie Ellington, Emily Hott, Campbell Selman, Aliyah Binford, Sydney Collazos, Maren Judisch, Taylor Strain, Zadi LaValley

**BY HOME STATE**

**Texas (15)**

Josie Bower, Kendall Cross, Taylor Ellis, Sidney Holman-Mansell, Maddison Kettler, Madison Lindsey, Goose McGlaun, Hannah Smith, Hannah Thompson, Ana Watson, Katie Ellington, Campbell Selman, Aliyah Binford, Taylor Strain, Sydney Collazos

**California (2)**

Alyssa Avalos, Gia Rodoni

**Iowa (1)**

Maren Judisch

**Louisiana (1)**

Nicky Dawson

**Missouri (1)**

Lou Gilbert

**Oklahoma (2)**

Emily Hott, Zadi LaValley

**Virginia (1)**

Ashley Marchand

**BATTING**

**LEFT (11)**

Alyssa Avalos, Josie Bower, Kendall Cross, Nicky Dawson, Katie Ellington, Lou Gilbert, Emily Hott, Maddison Kettler, Madison Lindsey, Taylor Strain, Ana Watson

**RIGHT (12)**

Aliyah Binford, Sydney Collazos, Taylor Ellis, Sidney Holman-Mansell, Maren Judisch, Zadi LaValley, Ashley Marchand, Goose McGlaun, Gia Rodoni, Campbell Selman, Hannah Smith, Hannah Thompson

**THROWING**

**LEFT (5)**

Alyssa Avalos, Kendall Cross, Katie Ellington, Madison Lindsey

**RIGHT (18)**

Aliyah Binford, Josie Bower, Sydney Collazos, Nicky Dawson, Taylor Ellis, Lou Gilbert, Sidney Holman-Mansell, Emily Hott, Maren Judisch, Maddison Kettler, Zadi LaValley, Ashley Marchand, Goose McGlaun, Gia Rodoni, Campbell Selman, Hannah Smith, Taylor Strain, Hannah Thompson, Ana Watson

**STARTING LINEUPS BY POSITION**

DATE	OPPONENT	P	C	1B	2B	3B	SS	LF	CF	RF	DP
Feb. 21	vs. #25 Arkansas	Rodoni	Collazos	McGlaun	Hott	Ellis	Binford	Gilbert	Dawson	Kettler	Watson
Feb. 21	at McNeese State	Mansell	LaValley	McGlaun	Hott	Gilbert	Binford	Watson	Dawson	Bower	Kettler
Feb. 24	UTA	Rodoni	LaValley	McGlaun	Hott	Ellis	Binford	Gilbert	Watson	Kettler	Bower
Feb. 26	UConn	Mansell	Collazos	McGlaun	Hott	Ellis	Binford	Gilbert	Dawson	Kettler	Bower
Feb. 26	Ole Miss	Rodoni	LaValley	McGlaun	Hott	Gilbert	Binford	Watson	Dawson	Bower	Kettler
Feb. 27	Lamar	Judisch	Collazos	McGlaun	Hott	Ellis	Binford	Gilbert	Dawson	Watson	Kettler
Feb. 27	UConn	Rodoni	Thompson	McGlaun	Hott	Gilbert	Selman	Watson	Dawson	Bower	Binford
Feb. 28	Mississippi State	Mansell	LaValley	McGlaun	Hott	Ellis	Binford	Gilbert	Dawson	Bower	Watson
March 4	at Louisiana	Rodoni	LaValley	McGlaun	Hott	Ellis	Binford	Gilbert	Dawson	Watson	Bower
March 6	vs. Tarleton State	Mansell	Collazos	McGlaun	Hott	Ellis	Binford	Gilbert	Dawson	Kettler	Bower
March 6	at Louisiana Tech	Rodoni	LaValley	McGlaun	Hott	Ellis	Binford	Gilbert	Dawson	Watson	Bower
March 7	at Louisiana Tech	Judisch	Collazos	McGlaun	Hott	Ellis	Binford	Gilbert	Dawson	Kettler	Bower
March 7	vs. Tarleton State	Binford	Thompson	McGlaun	Hott	Ellis	Selman	Gilbert	Dawson	Bower	Kettler
March 11	at Arizona State	Rodoni	LaValley	McGlaun	Hott	Ellis	Binford	Gilbert	Dawson	Watson	Bower
March 12	vs. Northern Illinois	Mansell	Collazos	McGlaun	Hott	Ellis	Binford	Gilbert	Dawson	Kettler	Watson
March 12	at GCU	Rodoni	LaValley	McGlaun	Hott	Gilbert	Binford	Watson	Dawson	Kettler	Bower
March 13	vs. Northern Illinois	Judisch	LaValley	McGlaun	Hott	Ellis	Binford	Gilbert	Dawson	Watson	Kettler
March 13	at GCU	Binford	Collazos	McGlaun	Hott	Ellis	Binford	Avalos	Dawson	Kettler	Gilbert
March 14	at Arizona State	Rodoni	LaValley	McGlaun	Hott	Ellis	Binford	Gilbert	Dawson	Kettler	Bower
March 16	SFA	Rodoni	Collazos	McGlaun	Hott	Ellis	Binford	Gilbert	Dawson	Kettler	LaValley
March 20	Houston	Rodoni	LaValley	McGlaun	Selman	Ellis	Binford	Gilbert	Avalos	Kettler	Bower
March 21	Houston	Mansell	Collazos	McGlaun	Smith	Ellis	Binford	Gilbert	Avalos	Kettler	LaValley
March 23	at Sam Houston	Binford	LaValley	McGlaun	Smith	Ellis	Selman	Gilbert	Avalos	Kettler	Bower
March 26	at Texas Tech	Rodoni	LaValley	McGlaun	Hott	Ellis	Binford	Gilbert	Avalos	Kettler	Bower
March 27	at Texas Tech	Mansell	Collazos	McGlaun	Hott	Ellis	Binford	Gilbert	Kettler	Bower	LaValley
March 28	at Texas Tech	Rodoni	LaValley	McGlaun	Hott	Ellis	Binford	Gilbert	Avalos	Kettler	Bower
April 1	at BYU	Rodoni	LaValley	McGlaun	Hott	Ellis	Binford	Gilbert	Avalos	Kettler	Bower
April 2	at BYU	Mansell	Collazos	McGlaun	Hott	Ellis	Binford	Gilbert	Kettler	Bower	LaValley
April 2	at BYU	Binford	LaValley	McGlaun	Hott	Ellis	Selman	Gilbert	Smith	Bower	--
April 14	Texas State	Rodoni	LaValley	McGlaun	Hott	Ellis	Selman	Gilbert	Smith	Kettler	Bower
April 17	at Oklahoma State	Rodoni	LaValley	McGlaun	Hott	Ellis	Selman	Gilbert	Smith	Kettler	Bower
April 17	at Oklahoma State	Judisch	Collazos	McGlaun	Hott	Ellis	Selman	Gilbert	Smith	Kettler	Bower
April 18	at Oklahoma State	Mansell	LaValley	McGlaun	Hott	Ellis	Selman	Gilbert	Avalos	Kettler	Bower
April 21	Sam Houston	Mansell	LaValley	McGlaun	Hott	Ellis	Binford	Gilbert	Smith	Kettler	Bower
April 23	at Iowa State	Rodoni	LaValley	McGlaun	Hott	Ellis	Binford	Gilbert	Smith	Bower	Collazos
April 24	at Iowa State	Mansell	Collazos	McGlaun	Hott	Ellis	Binford	Gilbert	Smith	Bower	LaValley
April 25	at Iowa State	Rodoni	LaValley	McGlaun	Hott	Ellis	Binford	Gilbert	Smith	Bower	Collazos
April 27	Oklahoma										
April 27	Oklahoma										

**STARTING LINEUPS BY BATTING ORDER**

DATE	OPPONENT	LEADOFF	2	3	CLEANUP	5	6	7	8	9	FLEX
Feb. 21	vs. #25 Arkansas	Dawson	Kettler	McGlaun	Binford	Hott	Gilbert	Ellis	Collazos	Watson	Rodoni
Feb. 21	at McNeese State	Dawson	Gilbert	McGlaun	Binford	Hott	Watson	Bower	LaValley	Kettler	Mansell
Feb. 24	UTA	Gilbert	Kettler	Binford	McGlaun	Bower	Watson	Ellis	LaValley	Hott	Rodoni
Feb. 26	UConn	Dawson	Gilbert	Binford	McGlaun	Bower	Kettler	Ellis	Collazos	Hott	Mansell
Feb. 26	Ole Miss	Dawson	Gilbert	Binford	McGlaun	Bower	Watson	LaValley	Kettler	Hott	Rodoni
Feb. 27	Lamar	Dawson	Gilbert	McGlaun	Binford	Watson	Hott	Ellis	Collazos	Kettler	Judisch
Feb. 27	UConn	Dawson	Gilbert	McGlaun	Binford	Bower	Watson	Selman	Thompson	Hott	Rodoni
Feb. 28	Mississippi State	Dawson	Gilbert	McGlaun	Bower	Binford	Watson	Ellis	LaValley	Hott	Mansell
March 4	at Louisiana	Dawson	Gilbert	McGlaun	Bower	Binford	Hott	Ellis	LaValley	Watson	Rodoni
March 6	vs. Tarleton State	Dawson	Gilbert	McGlaun	Bower	Binford	Hott	Ellis	Collazos	Kettler	Mansell
March 6	at Louisiana Tech	Dawson	Gilbert	McGlaun	Bower	Binford	Hott	Ellis	LaValley	Watson	Rodoni
March 7	at Louisiana Tech	Dawson	Gilbert	McGlaun	Bower	Binford	Kettler	Ellis	Collazos	Hott	Judisch
March 7	vs. Tarleton State	Dawson	Gilbert	McGlaun	Bower	Binford	Kettler	Ellis	Thompson	Hott	Selman
March 11	at Arizona State	Dawson	Gilbert	McGlaun	Binford	Bower	Watson	Ellis	LaValley	Hott	Rodoni
March 12	vs. Northern Illinois	Dawson	Gilbert	McGlaun	Binford	Watson	Kettler	Ellis	Collazos	Hott	Mansell
March 12	at GCU	Dawson	Gilbert	McGlaun	Binford	Bower	Watson	LaValley	Kettler	Hott	Rodoni
March 13	vs. Northern Illinois	Dawson	Gilbert	McGlaun	Binford	Watson	Hott	Ellis	LaValley	Kettler	Judisch
March 13	at GCU	Dawson	Gilbert	McGlaun	Binford	Hott	Kettler	Ellis	Collazos	Avalos	Selman
March 14	at Arizona State	Dawson	Gilbert	Binford	McGlaun	LaValley	Hott	Bower	Ellis	Kettler	Rodoni
March 16	SFA	Dawson	Gilbert	Binford	McGlaun	LaValley	Hott	Ellis	Collazos	Kettler	Rodoni
March 20	Houston	Gilbert	Kettler	Binford	McGlaun	LaValley	Bower	Ellis	Selman	Avalos	Rodoni
March 21	Houston	Gilbert	Kettler	McGlaun	LaValley	Binford	Avalos	Ellis	Collazos	Smith	Mansell
March 23	at Sam Houston	Gilbert	Kettler	McGlaun	LaValley	Binford	Avalos	Ellis	Bower	Smith	Selman
March 26	at Texas Tech	Gilbert	Kettler	McGlaun	LaValley	Binford	Hott	Ellis	Bower	Avalos	Rodoni
March 27	at Texas Tech	Gilbert	Kettler	McGlaun	LaValley	Binford	Bower	Ellis	Collazos	Hott	Mansell
March 28	at Texas Tech	Gilbert	Kettler	McGlaun	Ellis	LaValley	Hott	Binford	Bower	Avalos	Rodoni
April 1	at BYU	Gilbert	Kettler	McGlaun	Ellis	LaValley	Hott	Binford	Bower	Avalos	Rodoni
April 2	at BYU	Gilbert	Kettler	McGlaun	Ellis	Binford	Bower	LaValley	Collazos	Hott	Mansell
April 2	at BYU	Gilbert	Smith	McGlaun	Ellis	Binford	Bower	LaValley	Selman	Hott	--
April 14	Texas State	Gilbert	Kettler	McGlaun	Ellis	Hott	Bower	LaValley	Selman	Smith	Rodoni
April 17	at Oklahoma State	Hott	Gilbert	McGlaun	Ellis	Bower	Kettler	LaValley	Selman	Smith	Rodoni
April 17	at Oklahoma State	Gilbert	Kettler	McGlaun	Ellis	Bower	Hott	Collazos	Selman	Smith	Judisch
April 18	at Oklahoma State	Gilbert	Kettler	McGlaun	Hott	LaValley	Ellis	Bower	Selman	Avalos	Mansell
April 21	Sam Houston	Gilbert	Hott	McGlaun	Binford	Ellis	LaValley	Bower	Smith	Kettler	Mansell
April 23	at Iowa State	Gilbert	Hott	McGlaun	Ellis	Binford	LaValley	Bower	Collazos	Smith	Rodoni
April 24	at Iowa State	Gilbert	Hott	McGlaun	Ellis	Binford	Bower	LaValley	Collazos	Smith	Mansell
April 25	at Iowa State	Gilbert	Hott	McGlaun	Binford	Ellis	Bower	LaValley	Collazos	Smith	Rodoni
April 27	Oklahoma										
April 27	Oklahoma										

**CAREER HOME RUNS****GOOSE MCGLAUN (34)**

No.	Opponent	Date	RBI
34	at Iowa State	4/24/2021	1
33	at Texas Tech	3/27/2021	1
32	at Sam Houston	3/23/2021	2
31	vs. NIU	3/12/2021	1
30	UT Arlington	2/24/2021	1
29	at Houston	3/10/2020	3
28	Central Arkansas	3/20/2019	1
27	McNeese State	3/12/2019	1
26	Louisiana	3/11/2019	1
<b>25</b>	<b>TEXAS</b>	<b>5/5/2018</b>	--
<b>24</b>	<b>TEXAS</b>	<b>5/5/2018</b>	<b>3</b>
23	at Iowa State	4/28/2018	3
<b>22</b>	<b>at Texas Tech</b>	<b>4/6/2018</b>	--
<b>21</b>	<b>at Texas Tech</b>	<b>4/6/2018</b>	<b>5</b>
20	at Abilene Christian	4/4/2018	1
<b>19</b>	<b>vs. North Dakota St.</b>	<b>3/25/2018</b>	--
<b>18</b>	<b>vs. North Dakota St.</b>	<b>3/25/2018</b>	<b>3</b>
17	vs. Delaware	3/10/2018	1
16	vs. Delaware	3/9/2018	3
15	at Long Beach St.	3/6/2018	3
14	vs. Louisiana	3/4/2018	1
13	vs. Charlotte	3/3/2018	1
12	vs. Michigan	3/2/2018	3
11	at Arizona	5/28/17	3
10	vs. Texas	5/13/17	2
9	TEXAS	5/5/17	1
8	TEXAS TECH	3/31/17	1
7	TEXAS TECH	3/31/17	2
6	ACU	3/29/17	1
5	at ULL	3/9/17	2
<b>4</b>	<b>vs. UCLA</b>	<b>3/5/17</b>	<b>2</b>
<b>3</b>	<b>vs. UCLA</b>	<b>3/5/17</b>	<b>3</b>
2	vs. Michigan	3/3/17	1
1	McNEESE ST	2/22/17	2

**HANNAH THOMPSON (7)**

No.	Opponent	Date	RBI
7	at Houston	3/10/2020	1
6	at Houston	3/10/2020	2
5	Kent State	2/23/2019	1
4	North Texas	2/22/2019	3
3	vs. McNeese St.	5/18/2018	3
2	vs. Oklahoma St.	5/11/2018	2
1	vs. Delaware	3/9/2018	1

**TAYLOR ELLIS (9)**

No.	Opponent	Date	RBI
9	Sam Houston	4/21/2021	2
8	vs. Arkansas	2/21/2021	2
7	vs. Louisville	2/7/2020	1
<b>6</b>	<b>at Oklahoma</b>	<b>4/5/2019</b>	<b>2</b>
<b>5</b>	<b>at Oklahoma</b>	<b>4/5/2019</b>	<b>1</b>
4	vs. Southern Utah	3/1/2019	2
3	North Texas	2/22/2019	2
2	at Texas Tech	4/6/2018	3
1	vs. Miss. Valley St.	2/17/2018	4

**MADDISON KETTLER (1)**

No.	Opponent	Date	RBI
1	at N'western St	3/8/2017	2

**ANA WATSON (2)**

No.	Opponent	Date	RBI
2	at GCU	3/12/2021	3
1	Oklahoma State	3/22/2019	2

**JOSIE BOWER (3)**

No.	Opponent	Date	RBI
3	Illinois	2/21/2020	2
2	Grand Canyon	2/14/2020	3
1	LSU	4/27/2019	1

**ALIYAH PRITCHETT (8)**

No.	Opponent	Date	RBI
8	at BYU	4/2/2021	1
7	at BYU	4/2/2021	1
6	at GCU	3/13/2021	2
5	at Houston	3/10/2020	1
4	vs. Florida State	2/29/2020	2
3	Louisiana Tech	2/25/2020	1
2	Illinois	2/23/2020	1
1	vs. Missouri	2/8/2020	1

**ALYSSA AVALOS (1)**

No.	Opponent	Date	RBI
1	at Arkansas	2/27/2020	1

**LOU GILBERT (5)**

No.	Opponent	Date	RBI
5	at Iowa State	4/24/2021	1
4	at Iowa State	4/23/2021	2
3	at Oklahoma State	4/18/2021	1
2	at GCU	3/13/2021	2
1	at Houston	3/10/2020	1

**EMILY HOTT (3)**

No.	Opponent	Date	RBI
3	at Iowa State	4/24/2021	1
2	at Texas Tech	3/28/2021	2
1	UT Arlington	2/24/2021	1

**ZADIE LAVALLEY (2)**

No.	Opponent	Date	RBI
2	at GCU	3/12/2021	2
1	at Arizona St.	3/11/2021	2

**HANNAH SMITH (1)**

No.	Opponent	Date	RBI
1	at GCU	3/13/2021	2

Bold denotes multi-HR game

**HITTING STREAKS**

Player	Season High	Current	Career High
Nicky Dawson	7	4	10 (2019)
Maddison Kettler	6	--	8 (2020)
Goose McGlaun	8	--	10 (2019)
Taylor Ellis	4	2	5 (2019)
Lou Gilbert	5	--	9 (2020)
Ana Watson	5	5	5 (2021)
Aliyah Binford	4	--	4 (2020, 2021)
Emily Hott	7	6	7 (2021)
Josie Bower	5	3	6 (2020)
Zadie LaValley	7	--	7 (2021)
Sydney Collazos	2	--	2 (2021)
Alyssa Avalos	2	--	2 (2021)
Hannah Smith	3	--	3 (2021)

**ON BASE STREAKS**

Player	Season High	Current	Career High
Goose McGlaun	9	--	19 (2018)
Maddison Kettler	13	--	16 (2017)
Nicky Dawson	18	18	26 (2019)
Taylor Ellis	6	2	10 (2017)
Lou Gilbert	6	6	15 (2019)
Ana Watson	8	8	8 (2021)
Aliyah Binford	8	--	8 (2021)
Emily Hott	24	24	24 (2021)
Josie Bower	8	5	8 (2021)
Zadie LaValley	8	3	8 (2021)
Hannah Smith	3	--	3 (2021)

**MULTI-HIT GAMES**

Player	2021	Career
Maddison Kettler	6	41
Goose McGlaun	10	50
Taylor Ellis	7	33
Nicky Dawson	9	34
Lou Gilbert	12	26
Aliyah Binford	9	14
Emily Hott	5	8
Ana Watson	4	14
Josie Bower	9	11
Zadie LaValley	3	3

**MULTI-RBI GAMES**

Player	2021	Career
Goose McGlaun	6	31
Taylor Ellis	5	25
Emily Hott	3	5
Aliyah Binford	2	7
Josie Bower	2	5
Maddison Kettler	3	5
Lou Gilbert	4	6
Hannah Thompson	2	8
Zadie LaValley	7	7
Ana Watson	4	8
Nicky Dawson	1	12

**2021 SEASON STATISTICS**

**Statistics Summary for Baylor (as of Apr 26, 2021)  
(All games)**

Record: 24-13 Home: 9-4 Away: 14-8 Neutral: 1-1 Big 12: 5-4

Date	Opponent	Score	Player	avg	gp-gs	ab	r	h	2b	3b	hr	rbi	bb	hbp	so	sb-att
2/21	vs #20 Arkansas	L 2-7	25 Dawson, Nicky	.394	19-19	66	20	26	2	5	0	7	5	1	7	11-13
2/21	at McNeese	w 3-2	9 Gilbert, Lou	.359	37-37	117	27	42	10	1	4	19	15	1	11	12-14
2/24	#21 UT ARLINGTON	w 6-1	34 McGlaun, Goose	.336	37-37	116	25	39	9	1	5	24	12	0	12	3-3
2/26	UCONN	w 5-0	4 Hott, Emily	.322	34-34	87	28	28	6	0	3	15	18	5	14	3-5
2/26	OLE MISS	L 4-10	44 Bower, Josie	.318	33-30	88	14	28	6	0	0	14	10	6	10	1-1
2/27	LAMAR	w 10-0	41 Binford, Aliyah	.314	33-33	102	13	32	8	0	3	18	6	2	16	2-2
2/27	UCONN	L 3-7	10 Ellis, Taylor	.288	35-33	104	12	30	5	1	2	15	5	0	16	0-1
2/28	#25 MISSISSIPPI STATE	w 10-6	55 Kettler, Maddiso	.288	31-28	73	9	21	3	1	0	11	9	0	7	4-7
3/4	at #12 Louisiana	w 8-1	99 LaValley, Zadie	.253	30-27	79	5	20	6	0	2	19	12	1	18	0-0
3/6	at Tarleton State	w 5-1	15 Collazos, Sydne	.105	19-15	38	4	4	1	0	0	3	2	2	5	1-1
3/6	at Louisiana Tech	w 3-1	-----													
3/7	at Louisiana Tech	w 3-2	22 Watson, Ana	.353	13-13	34	9	12	3	0	1	13	3	2	5	0-3
3/7	TARLETON STATE	w 2-0	19 Judisch, Maren	.333	3-0	3	0	1	0	0	0	0	0	0	1	0-0
3/11	at #11 Arizona State	L 4-7	8 Smith, Hannah	.194	27-10	31	9	6	0	0	1	3	2	0	6	1-1
3/12	NORTHERN ILLINOIS	w 3-2	13 Thompson, Han	.167	16-2	18	0	3	1	0	0	5	1	1	4	0-0
3/12	at Grand Canyon	w 12-1	23 Avalos, Alyssa	.120	29-8	25	10	3	0	0	0	1	2	0	6	2-4
3/13	vs Northern Illinois	w 8-1	18 Selman, Campb	.063	25-10	16	0	1	0	0	0	0	0	1	7	1-1
3/13	at Grand Canyon	w 12-2	45 Ellington, Katie	.000	3-0	3	0	0	0	0	0	0	0	0	2	0-0
3/14	at #11 Arizona State	w 7-2	12 Cross, Kendall	.000	5-0	1	1	0	0	0	0	0	2	1	1	0-0
3/16	SFA	w 3-2	7 Rodoni, Gia	.000	1-1	0	0	0	0	0	0	0	0	0	0	0-0
3/20	HOUSTON	L 1-3	Totals	.296	37	1001	186	296	60	9	21	167	104	23	148	41-56
3/21	HOUSTON	w 2-1	Opponents	.251	37	954	125	239	35	2	29	112	90	20	218	29-36
3/23	at Sam Houston	w 7-3														
*3/26	at Texas Tech	w 5-2	LOB - Team (225), Opp (225). DPs turned - Team (10), Opp (13). IBB - Team (1), Bower 1, Opp (4).													
*3/27	at Texas Tech	w 8-2														
*3/28	at Texas Tech	w 5-2														
4/1	at BYU	L 1-4	<b>Player</b>	<b>era</b>	<b>w-l</b>	<b>app</b>	<b>gs</b>	<b>cg</b>	<b>sh</b>	<b>sv</b>	<b>ip</b>	<b>h</b>	<b>r</b>	<b>er</b>	<b>bb</b>	<b>so</b>
4/2	at BYU	L 5-7	19 Judisch, Maren	2.25	3-1	14	4	2	1	0	37.1	32	12	12	10	20
4/2	at BYU	L 5-7	5 Mansell, Sidney	3.29	7-3	19	11	1	0	0	66.0	50	33	31	31	69
4/14	TEXAS STATE	L 5-7	7 Rodoni, Gia	3.30	9-6	24	18	7	0	3	106.0	120	58	50	32	101
*4/17	at #11 Oklahoma State	L 0-4	41 Binford, Aliyah	3.56	5-3	14	4	1	1	1	37.1	37	22	19	17	28
*4/17	at #11 Oklahoma State	L 1-5	Totals	3.18	24-13	37	37	11	4	4	246.2	239	125	112	90	218
*4/18	at #11 Oklahoma State	L 3-11	Opponents	4.77	13-24	37	37	13	1	0	246.2	296	186	168	104	148
4/21	SAM HOUSTON	w 8-0														
*4/23	at Iowa State	w 9-5	PB - Team (3), LaValley 2, Collazos 1, Opp (2). SBA/ATT - LaValley (20-24), Rodoni (16-19), Mansell (10-12), Collazos (6-6), Thompson (3-3), Binford (2-3), Judisch (1-2).													
*4/24	at Iowa State	L 4-6														
*4/25	at Iowa State	w 4-1														

Score by innings	1	2	3	4	5	6	7	8	9	Total
Baylor	25	34	28	38	21	22	14	3	1	186
Opponents	19	30	14	15	15	16	16	0	0	125

Win-loss breakouts: Day 18-9; Night 6-4; vs Left 7-1; vs Right 17-12;  
 1-run games 5-0; 2-run games 2-5; 5+run games 10-3; Extra inns 2-0; Shutouts 4-1.  
 Current streak: Won 1; Longest winning streak: 6; Longest losing streak: 7.  
 Attendance: Home 3518 (avg 270); Away 5293 (avg 230); Total 8811 (avg 244).



**2021 BIG 12 STATISTICS****Statistics Summary for Baylor (as of Apr 26, 2021)  
(Big 12 games only)**

Record: 5-4 Home: 0-0 Away: 5-4 Big 12: 5-4

Date	Opponent	Score	Player	avg	gp-gs	ab	r	h	2b	3b	hr	rbi	bb	hbp	so	sb-att
*3/26	at Texas Tech	w 5-2	9 Gilbert, Lou	.484	9-9	31	7	15	4	0	3	9	5	0	3	3-5
*3/27	at Texas Tech	w 8-2	4 Hott, Emily	.458	9-9	24	10	11	3	0	2	8	7	0	2	0-1
*3/28	at Texas Tech	w 5-2	34 McGlaun, Goose	.346	9-9	26	5	9	1	0	2	7	5	0	6	0-0
*4/17	at #11 Oklahoma State	L 0-4	44 Bower, Josie	.280	9-9	25	5	7	0	0	0	2	2	3	1	0-0
*4/17	at #11 Oklahoma State	L 1-5	10 Ellis, Taylor	.241	9-9	29	2	7	2	0	0	1	1	0	5	0-1
*4/18	at #11 Oklahoma State	L 3-11	41 Binford, Aliyah	.211	6-6	19	3	4	0	0	0	3	1	0	4	0-0
*4/23	at Iowa State	w 9-5	99 LaValley, Zadi	.167	9-8	24	1	4	3	0	0	5	6	0	8	0-0
*4/24	at Iowa State	L 4-6	55 Kettler, Maddiso	.143	6-6	21	1	3	0	0	0	0	2	0	3	1-1
*4/25	at Iowa State	w 4-1	8 Smith, Hannah	.143	7-5	14	3	2	0	0	0	1	1	0	5	1-1
			15 Collazos, Sydne	.000	5-5	13	0	0	0	0	0	1	0	1	3	0-0
-----																
			18 Selman, Campb	.250	6-3	4	0	1	0	0	0	0	0	1	3	1-1
			23 Avalos, Alyssa	.000	8-3	6	2	0	0	0	0	0	1	0	4	1-1
			13 Thompson, Han	.000	3-0	3	0	0	0	0	0	0	1	0	1	0-0
			19 Judisch, Maren	.000	2-0	2	0	0	0	0	0	0	0	0	1	0-0
Totals				.261	9	241	39	63	13	0	7	37	32	5	49	7-11
Opponents				.285	9	235	38	67	9	1	9	31	20	1	56	7-9

LOB - Team (54), Opp (47). DPs turned - Team (2), Opp (6).

Player	era	w-l	app	gs	cg	sh	sv	ip	h	r	er	bb	so			
7 Rodoni, Gia	3.50	4-1	6	5	3	0	0	36.0	44	21	18	8	32			
-----																
41 Binford, Aliyah	3.50	0-1	2	0	0	0	0	4.0	2	2	2	1	4			
19 Judisch, Maren	4.77	0-1	3	1	0	0	0	7.1	9	5	5	5	7			
5 Mansell, Sidney	5.68	1-1	4	3	0	0	0	12.1	12	10	10	6	13			
Totals				4.11	5-4	9	9	3	0	0	59.2	67	38	35	20	56
Opponents				4.00	4-5	9	9	3	1	0	63.0	63	39	36	32	49

PB - Team (0), Opp (2). SBA/ATT - Rodoni (5-7), LaValley (5-7), Collazos (2-2), Judisch (1-1), Mansell (1-1).

Score by innings	1	2	3	4	5	6	7	8	Total
Baylor	4	7	7	7	4	6	1	3	39
Opponents	2	12	4	4	6	5	5	0	38

Win-loss breakouts: Day 4-4; Night 1-0; vs Left 1-1; vs Right 4-3;  
 1-run games 0-0; 2-run games 0-1; 5+run games 1-1; Extra inns 1-0; Shutouts 0-1.  
 Current streak: Won 1; Longest winning streak: 3; Longest losing streak: 3.  
 Attendance: Home 0 (avg 0); Away 2596 (avg 288); Total 2596 (avg 288).

**SEASON RESULTS**

**2021 Baylor Softball  
Game Results for Baylor (as of Apr 26, 2021)  
(All games)**

Date	Opponent	Score	Inns	Overall	Big 12	Pitcher of record	Attend	Time
Feb 21, 2021	vs #20 Arkansas	L 2-7	7	0-1-0	0-0-0	Rodoni (L 0-1)	0	1:30
Feb 21, 2021	at McNeese	w 3-2	(9)	1-1-0	0-0-0	Binford (W 1-0)	376	3 hr
Feb 24, 2021	#21 UT ARLINGTON	w 6-1	7	2-1-0	0-0-0	Rodoni (W 1-1)	263	1:50
Feb 26, 2021	UCONN	w 5-0	7	3-1-0	0-0-0	Mansell (W 1-0)	300	1:20
Feb 26, 2021	OLE MISS	L 4-10	7	3-2-0	0-0-0	Binford (L 1-1)	300	2:22
Feb 27, 2021	LAMAR	w 10-0	5	4-2-0	0-0-0	Judisch (W 1-0)	150	1:49
Feb 27, 2021	UCONN	L 3-7	7	4-3-0	0-0-0	Rodoni (L 1-2)	300	1:46
Feb 28, 2021	#25 MISSISSIPPI STATE	w 10-6	7	5-3-0	0-0-0	Mansell (W 2-0)	248	2:18
Mar 04, 2021	at #12 Louisiana	w 8-1	7	6-3-0	0-0-0	Rodoni (W 2-2)	262	2:17
Mar 06, 2021	at Tarleton State	w 5-1	7	7-3-0	0-0-0	Mansell (W 3-0)	0	2:03
Mar 06, 2021	at Louisiana Tech	w 3-1	7	8-3-0	0-0-0	Rodoni (W 3-2)	250	2:00
Mar 07, 2021	at Louisiana Tech	w 3-2	7	9-3-0	0-0-0	Judisch (W 2-0)	250	2:05
Mar 07, 2021	TARLETON STATE	w 2-0	7	10-3-0	0-0-0	Binford (W 2-1)	250	1:37
Mar 11, 2021	at #11 Arizona State	L 4-7	7	10-4-0	0-0-0	Rodoni (L 3-3)	372	2:15
Mar 12, 2021	NORTHERN ILLINOIS	w 3-2	7	11-4-0	0-0-0	Mansell (W 4-0)	0	1:48
Mar 12, 2021	at Grand Canyon	w 12-1	5	12-4-0	0-0-0	Rodoni (W 4-3)	45	1:45
Mar 13, 2021	vs Northern Illinois	w 8-1	7	13-4-0	0-0-0	Judisch (W 3-0)	0	1:56
Mar 13, 2021	at Grand Canyon	w 12-2	7	14-4-0	0-0-0	Binford (W 3-1)	45	2:15
Mar 14, 2021	at #11 Arizona State	w 7-2	7	15-4-0	0-0-0	Binford (W 3-1)	323	2:12
Mar 16, 2021	SFA	w 3-2	7	16-4-0	0-0-0	Mansell (W 5-0)	280	2:18
Mar 20, 2021	HOUSTON	L 1-3	7	16-5-0	0-0-0	Rodoni (L 4-4)	403	1:56
Mar 21, 2021	HOUSTON	w 2-1	7	17-5-0	0-0-0	Binford (W 5-1)	376	2:14
Mar 23, 2021	at Sam Houston	w 7-3	7	18-5-0	0-0-0	Rodoni (W 5-4)	115	2:21
* Mar 26, 2021	at Texas Tech	w 5-2	7	19-5-0	1-0-0	Rodoni (W 6-4)	227	2:19
* Mar 27, 2021	at Texas Tech	w 8-2	7	20-5-0	2-0-0	Mansell (W 6-0)	435	2:15
* Mar 28, 2021	at Texas Tech	w 5-2	(8)	21-5-0	3-0-0	Rodoni (W 7-4)	251	2:28
Apr 01, 2021	at BYU	L 1-4	7	21-6-0	3-0-0	Rodoni (L 7-4)	280	2:06
Apr 02, 2021	at BYU-1	L 5-7	7	21-7-0	3-0-0	Mansell (L 6-1)	-	2:25
Apr 02, 2021	at BYU-2	L 5-7	7	21-8-0	3-0-0	Binford (L 5-2)	379	2:10
Apr 14, 2021	TEXAS STATE	L 5-7	7	21-9-0	3-0-0	Mansell (L 6-2)	340	2:35
* Apr 17, 2021	at #11 Oklahoma State-1	L 0-4	7	21-10-0	3-1-0	Rodoni (L 7-6)	281	2:12
* Apr 17, 2021	at #11 Oklahoma State-2	L 1-5	7	21-11-0	3-2-0	Judisch (L 3-1)	376	2:07
* Apr 18, 2021	at #11 Oklahoma State	L 3-11	6	21-12-0	3-3-0	Mansell (L 6-3)	348	2:19
Apr 21, 2021	SAM HOUSTON	w 8-0	5	22-12-0	3-3-0	Mansell (W 7-3)	308	1:35
* Apr 23, 2021	at Iowa State	w 9-5	7	23-12-0	4-3-0	Rodoni (W 8-6)	167	2:24
* Apr 24, 2021	at Iowa State	L 4-6	7	23-13-0	4-4-0	Binford (L 5-3)	286	2:16
* Apr 25, 2021	at Iowa State	w 4-1	7	24-13-0	5-4-0	Rodoni (W 9-6)	225	1:50

( ) extra inning game

**BAYLOR GAME-BY-GAME**

**2021 Baylor Softball  
Team Game-by-Game for Baylor (as of Apr 26, 2021)  
Batting (All games)**

Date	Opponent	ab	r	h	rbi	2b	3b	hr	tb	bb	ibb	sb	cs	hbp	sac	sf	gdp	k	po	a	e	lob	avg
Feb 21	vs Arkansas	24	2	3	2	0	0	1	6	0	0	0	0	0	0	0	0	7	18	5	0	1	.125
Feb 21	at McNeese	41	3	11	1	4	0	0	15	0	0	0	0	2	0	0	0	3	27	16	0	13	.215
Feb 24	UT ARLINGTON	23	6	8	6	3	1	2	19	2	0	0	0	0	1	1	0	0	21	6	1	3	.250
Feb 26	UCONN	26	5	7	5	1	1	0	10	2	0	3	0	0	0	0	0	1	21	6	0	5	.254
Feb 26	OLE MISS	25	4	6	4	1	0	0	7	2	1	0	1	0	0	0	0	4	21	10	1	2	.252
Feb 27	LAMAR	22	10	9	9	2	1	0	13	5	0	7	0	0	0	0	0	0	15	10	1	5	.273
Feb 27	UCONN	28	3	8	3	2	0	0	10	3	0	0	0	0	0	0	0	3	21	9	0	7	.275
Feb 28	MISSISSIPPI STAT	28	10	12	8	1	0	0	13	3	0	3	0	1	0	0	0	4	21	10	0	4	.295
Mar 04	at Louisiana	35	8	14	7	4	0	0	18	3	0	4	0	0	0	0	1	9	21	10	1	9	.310
Mar 06	at Tarleton State	30	5	9	3	1	0	0	10	6	0	3	1	0	1	0	0	4	21	14	2	11	.309
Mar 06	at Louisiana Tech	26	3	6	3	1	0	0	7	2	0	2	1	1	0	0	0	4	21	11	0	5	.302
Mar 07	at Louisiana Tech	28	3	7	3	2	1	0	11	1	0	2	1	0	0	1	0	3	21	8	0	6	.298
Mar 07	TARLETON STATE	25	2	7	2	1	1	0	10	2	0	2	0	0	0	0	0	4	21	10	0	7	.296
Mar 11	at Arizona State	24	4	5	3	2	1	1	12	1	0	1	1	2	0	1	0	9	18	5	1	3	.291
Mar 12	NORTHERN ILLINO	26	3	9	3	3	0	1	15	3	0	0	1	0	1	0	0	0	21	7	2	9	.294
Mar 12	at Grand Canyon	26	12	11	10	3	0	2	20	6	0	1	1	2	1	0	0	4	15	4	0	8	.302
Mar 13	vs Northern Illinois	35	8	16	8	1	1	0	19	1	0	1	1	0	0	0	0	6	21	11	0	7	.314
Mar 13	at Grand Canyon	36	12	13	9	2	2	3	28	3	0	1	0	2	1	0	0	5	21	14	1	9	.317
Mar 14	at Arizona State	28	7	7	7	1	0	0	8	3	0	0	0	3	0	0	0	6	21	9	0	6	.313
Mar 16	SFA	19	3	5	2	1	0	0	6	4	0	3	1	0	1	0	0	1	21	8	1	3	.312
Mar 20	HOUSTON	23	1	4	1	0	0	0	4	2	0	0	1	0	0	0	0	3	21	6	1	3	.306
Mar 21	HOUSTON	29	2	10	2	3	0	0	13	2	0	0	0	0	2	0	0	3	21	4	0	11	.308
Mar 23	at Sam Houston	29	7	9	7	3	0	1	15	2	0	0	0	1	1	0	0	0	21	4	1	5	.308
*Mar 26	at Texas Tech	27	5	8	5	2	0	0	10	3	0	0	0	0	0	1	0	4	21	6	1	5	.308
*Mar 27	at Texas Tech	30	8	12	8	2	0	1	17	3	0	1	0	2	1	0	0	4	21	7	1	7	.312
*Mar 28	at Texas Tech	29	5	6	5	2	0	1	11	8	0	1	1	1	0	0	0	11	24	8	1	9	.307
Apr 01	at BYU	26	1	5	1	0	0	0	5	1	0	0	0	0	0	0	0	4	18	5	0	5	.303
Apr 02	at BYU	26	5	7	5	1	0	1	11	2	0	0	1	1	1	0	0	2	18	10	1	4	.302
Apr 02	at BYU	30	5	9	5	2	0	1	14	2	0	0	0	2	0	0	0	5	18	2	0	8	.302
Apr 14	TEXAS STATE	27	5	9	5	1	0	0	10	4	0	0	0	1	1	1	0	5	21	8	1	8	.303
*Apr 17	at Oklahoma State	23	0	3	0	0	0	0	3	2	0	0	0	0	0	0	0	8	18	5	0	4	.299
*Apr 17	at Oklahoma State	24	1	3	1	1	0	0	4	5	0	0	0	0	0	0	0	7	18	6	0	7	.294
*Apr 18	at Oklahoma State	25	3	7	3	2	0	1	12	4	0	1	0	1	0	0	0	5	17	7	3	9	.293
Apr 21	SAM HOUSTON	15	8	7	6	1	0	1	11	5	0	1	0	0	2	2	0	0	15	6	1	4	.296
*Apr 23	at Iowa State	32	9	13	8	3	0	1	19	3	0	1	1	0	0	1	1	3	21	3	0	6	.300
*Apr 24	at Iowa State	28	4	7	4	1	0	3	17	0	0	1	0	1	0	0	0	3	18	9	0	4	.299
*Apr 25	at Iowa State	23	4	4	3	0	0	0	4	4	0	2	2	0	1	0	0	4	21	11	0	3	.296
Totals		1001	186	296	167	60	9	21	437	104	1	41	15	23	15	8	2	148	740	290	22	225	.296

## OPPONENT GAME-BY-GAME

### 2021 Baylor Softball Opponent Game-by-Game for Baylor (as of Apr 26, 2021) Batting (All games)

Date	Opponent	ab	r	h	rbi	2b	3b	hr	tb	bb	ibb	sb	cs	hbp	sac	sf	qdp	k	po	a	e	lob	avg
Feb 21	vs Arkansas	20	7	5	7	2	0	1	10	4	0	0	1	5	2	0	0	7	21	2	0	6	.250
Feb 21	at McNeese	32	2	7	1	0	0	0	7	5	0	2	1	1	0	0	0	8	27	17	3	9	.231
Feb 24	UT ARLINGTON	27	1	5	1	1	0	0	6	1	0	0	0	0	0	0	0	4	18	9	0	6	.215
Feb 26	UCONN	24	0	3	0	0	0	0	3	2	0	1	0	0	0	0	0	9	18	8	1	5	.194
Feb 26	OLE MISS	31	10	10	10	3	0	3	22	7	1	0	0	1	1	0	0	4	21	10	0	9	.224
Feb 27	LAMAR	21	0	6	0	0	0	0	6	2	0	0	0	0	0	1	0	0	12	5	1	9	.232
Feb 27	UCONN	27	7	10	7	1	0	1	14	5	2	3	0	0	3	0	0	5	21	6	0	7	.253
Feb 28	MISSISSIPPI STAT	31	6	9	6	0	0	3	18	1	0	0	0	1	0	0	0	6	18	6	2	6	.258
Mar 04	at Louisiana	27	1	6	1	1	0	0	7	1	0	1	0	0	0	0	0	4	21	6	1	6	.254
Mar 06	at Tarleton State	24	1	3	0	0	0	0	3	1	0	0	0	0	0	0	1	6	21	9	2	3	.242
Mar 06	at Louisiana Tech	27	1	7	1	1	0	0	8	0	0	1	0	1	2	0	0	9	21	10	0	8	.244
Mar 07	at Louisiana Tech	26	2	3	2	1	0	0	4	3	0	1	0	2	0	0	0	7	21	9	2	8	.233
Mar 07	TARLETON STATE	24	0	3	0	0	0	0	3	0	0	1	0	0	0	0	0	6	18	5	1	3	.226
Mar 11	at Arizona State	27	7	9	7	2	0	2	17	4	0	0	0	0	1	0	0	3	21	7	0	7	.234
Mar 12	NORTHERN ILLINO	26	2	4	0	1	0	0	5	2	0	0	0	0	1	0	0	7	18	9	1	6	.228
Mar 12	at Grand Canyon	21	1	6	1	0	0	0	6	0	0	0	0	1	0	0	0	4	15	6	3	6	.231
Mar 13	vs Northern Illinois	25	1	5	1	2	0	1	10	1	0	0	0	1	0	0	0	1	21	7	1	5	.230
Mar 13	at Grand Canyon	25	2	7	2	0	0	0	7	2	0	0	1	0	1	0	0	4	21	8	3	5	.232
Mar 14	at Arizona State	25	2	6	2	1	0	0	7	6	1	2	0	1	1	0	1	5	21	5	1	10	.233
Mar 16	SFA	26	2	5	2	1	0	0	6	2	0	0	0	2	0	0	0	6	18	12	0	7	.231
Mar 20	HOUSTON	24	3	5	3	1	0	0	6	4	0	2	1	0	2	0	0	10	21	5	0	6	.230
Mar 21	HOUSTON	23	1	4	1	1	0	0	5	4	0	3	1	0	1	0	0	8	20	9	1	6	.227
Mar 23	at Sam Houston	27	3	5	3	1	0	0	6	3	0	1	0	0	0	0	0	11	21	11	1	6	.225
*Mar 26	at Texas Tech	25	2	5	2	0	0	2	11	1	0	0	0	0	1	0	1	6	21	9	0	4	.224
*Mar 27	at Texas Tech	26	2	5	0	1	0	0	6	2	0	0	0	0	0	0	0	7	21	7	0	5	.223
*Mar 28	at Texas Tech	27	2	6	1	1	0	0	7	1	0	2	0	0	1	0	0	6	24	7	0	3	.223
Apr 01	at BYU	24	4	7	4	2	0	2	15	0	0	1	0	0	1	0	0	6	21	13	0	3	.225
Apr 02	at BYU	24	7	6	6	1	1	2	15	3	0	0	0	2	1	0	0	3	21	14	1	5	.226
Apr 02	at BYU	27	7	9	7	2	0	2	17	2	0	0	0	0	0	0	0	4	21	9	0	4	.230
Apr 14	TEXAS STATE	35	7	14	6	1	0	3	24	4	0	2	0	1	0	0	0	9	21	9	0	12	.238
*Apr 17	at Oklahoma State	28	4	12	3	2	0	1	17	2	0	2	1	0	1	0	0	4	21	6	0	9	.244
*Apr 17	at Oklahoma State	26	5	9	5	1	0	0	10	4	0	1	0	0	1	0	0	5	21	4	1	8	.248
*Apr 18	at Oklahoma State	22	11	9	9	2	0	2	17	5	0	1	0	0	3	1	0	4	18	10	0	3	.252
Apr 21	SAM HOUSTON	19	0	3	0	0	0	0	3	1	0	1	0	0	0	0	0	6	12	5	1	5	.250
*Apr 23	at Iowa State	31	5	10	5	1	1	2	19	1	0	0	0	0	0	0	0	7	21	13	1	6	.252
*Apr 24	at Iowa State	24	6	5	6	1	0	2	12	4	0	1	0	1	0	0	0	10	21	5	0	5	.251
*Apr 25	at Iowa State	26	1	6	0	0	0	0	6	0	0	0	1	0	0	0	0	7	21	9	2	4	.251
Totals		954	125	239	112	35	2	29	365	90	4	29	7	20	24	2	3	218	740	301	30	225	.251



**2021 RECORD WHEN...**

**2021 Baylor Softball  
Games Summary for Baylor (as of Apr 26, 2021)  
(All games)**

<b>Score by innings</b>	<b>1</b>	<b>2</b>	<b>3</b>	<b>4</b>	<b>5</b>	<b>6</b>	<b>7</b>	<b>8</b>	<b>9</b>	<b>Total</b>
Baylor	25	34	28	38	21	22	14	3	1	186
Opponents	19	30	14	15	15	16	16	0	0	125

**Record when ...**

Overall	24-13	After 4 leading	17-2
Conference	5-4	..... trailing	3-10
Non-Conference	19-9	..... tied	4-1
Home games	9-4	After 5 leading	16-2
Away games	14-8	..... trailing	3-11
Neutral site	1-1	..... tied	2-0
Day games	18-9	After 6 leading	19-0
Night games	6-4	..... trailing	0-11
vs Left starter	7-1	..... tied	2-1
vs Right starter	17-12		
1-Run games	5-0	Hit 0 home runs	15-7
2-Run games	2-5	... 1 home run	6-5
5+Run games	10-3	... 2+ home runs	3-1
Extra innings	2-0		
Shutouts	4-1	Opponent 0 home runs	20-2
		..... 1 home run	1-3
Scoring 0-2 runs	2-5	..... 2+ HRs	3-8
..... 3-5 runs	10-8		
..... 6-9 runs	8-0	Made 0 errors	12-7
..... 10+ runs	4-0	.... 1 error	10-5
		.... 2+ errors	2-1
Opponent 0-2 runs	21-0		
..... 3-5 runs	2-4	Opp. made 0 errors	6-11
..... 6-9 runs	1-7	..... 1 error	11-2
..... 10+ runs	0-2	..... 2+ errors	7-0
Scored in 1st inning	11-2	Out-hit opponent	20-2
Opp. scored in 1st	8-6	Out-hit by opponent	2-10
Scores first	18-4	Hits are tied	2-1
Opp. scores first	6-9		

**Record when team scores:**

Runs	0	1	2	3	4	5	6	7	8	9	10+
W-L	0-1	0-3	2-1	5-2	1-3	4-3	1-0	2-0	4-0	1-0	4-0

**Record when opponent scores:**

Runs	0	1	2	3	4	5	6	7	8	9	10+
W-L	4-0	8-0	9-0	1-1	0-2	1-1	1-1	0-6	0-0	0-0	0-2

**Record when leading after:**

Inn.	1	2	3	4	5	6
W-L	10-1	15-1	16-2	17-2	16-2	19-0

**Record when trailing after:**

Inn.	1	2	3	4	5	6
W-L	4-5	3-10	2-9	3-10	3-11	0-11

**Record when tied after:**

Inn.	1	2	3	4	5	6
W-L	10-7	6-2	6-2	4-1	2-0	2-1

Current winning streak: 1  
 Longest winning streak: 6  
 Longest losing streak: 7

Home attendance : 3518 ( 13 dates avg = 270 )  
 Away attendance : 5293 ( 23 dates avg = 230 )  
 Total attendance: 8811 ( 36 dates avg = 244 )



**2**  
**TAYLOR STRAIN**  
OF | L/R | FR  
ROBINSON, TEXAS



**4**  
**EMILY HOTT**  
UTL | L/R | FR  
EDMOND, OKLA.



**5**  
**SIDNEY MANSELL**  
P | R/R | JR  
BELTON, TEXAS



**7**  
**GIA RODONI**  
P | R/R | SR  
LOS BANOS, CALIF.



**8**  
**HANNAH SMITH**  
UTL | R/R | JR  
BEAUMONT, TEXAS



**9**  
**LOU GILBERT**  
OF | L/R | SO  
KANSAS CITY, MO.



**10**  
**TAYLOR ELLIS**  
INF/C | R/R | SR  
WACO, TEXAS



**12**  
**KENDALL CROSS**  
INF | L/L | SO  
FRIENDSWOOD, TEXAS



**13**  
**HANNAH THOMPSON**  
C | R/R | JR  
DICKINSON, TEXAS



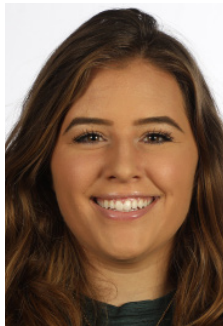
**15**  
**SYDNEY COLLAZOS**  
C | R/R | FR  
GEORGETOWN, TEXAS



**18**  
**CAMPBELL SELMAN**  
UTIL | R/R | FR  
LUFKIN, TEXAS



**19**  
**MAREN JUDISCH**  
P | R/R | FR  
WAUKEE, IOWA



**20**  
**ASHLEY MARCHAND**  
C | R/R | JR  
HAYMARKET, VA.



**22**  
**ANA WATSON**  
OF | L/R | SO  
HEWITT, TEXAS



**23**  
**ALYSSA AVALOS**  
OF | L/L | JR  
RANCHO CUCAMONGA, CALIF.



**24**  
**MADISON LINDSEY**  
P | L/L | SO  
KINGWOOD, TEXAS



**25**  
**NICKY DAWSON**  
INF | L/R | SR  
BATON ROUGE, LA.



**34**  
**GOOSE McGLAUN**  
INF | R/R | SR  
HUMBLE, TEXAS



**41**  
**ALIYAH BINFORD**  
P/INF | R/R | FR  
NEW BRAUNFELS, TEXAS



**44**  
**JOSIE BOWER**  
OF | L/R | SO  
SPRING, TEXAS



**45**  
**KATIE ELLINGTON**  
C | L/L | FR  
TOMBALL, TEXAS



**55**  
**MADDISON KETTLER**  
OF | L/R | JR  
WEST, TEXAS



**99**  
**ZADIE LAVALLEY**  
C | R/R | FR  
CHOCTAW, OKLA.