



**Baylor at TCU**

01/09/21 Ed and Rae Schollmaier Arena, Fort Worth  
2020-21 Men's Basketball

Game Time: 2:00 PM  
Game Duration: 2:03  
Attendance: 1,891

Officials: Gary Maxwell, Kelly Self, James Breeding

Baylor - 67

Record: 11-0 (4-0)

NO.	Name	Min	FG			Rebounds			Fouls		TP	AS	TO	ST	Blocks		+/-
			M-A	M-A	M-A	OR	DR	TOT	PF	FD					BS	BA	
0	Flo Thamba	F 16:12	1-1	0-0	0-2	1	6	7	3	2	2	0	0	1	1	0	16
11	Mark Vital	F 24:53	2-4	0-0	5-6	2	4	6	4	5	9	0	2	0	0	0	6
12	Jared Butler	G 38:47	11-17	4-8	2-4	2	6	8	3	2	28	4	2	5	0	1	18
31	MaCio Teague	G 31:17	5-14	2-6	0-0	2	0	2	0	1	12	2	1	1	0	0	23
45	Davion Mitchell	G 37:51	3-9	0-4	4-6	0	0	0	4	4	10	6	3	1	0	1	21
23	Jonathan Tchamwa Tchatchoua	20:09	2-6	0-0	0-0	2	1	3	3	0	4	1	1	1	1	0	11
10	Adam Flagler	10:41	0-3	0-1	0-1	0	1	1	1	1	0	1	0	1	0	1	-1
24	Matthew Mayer	15:12	1-1	0-0	0-0	0	2	2	2	1	2	3	1	0	1	0	-5
4	LJ Cryer	04:58	0-0	0-0	0-0	0	0	0	0	0	0	0	0	0	0	0	1
Team						0	3	3			0		0				
<b>Totals</b>			25-55	6-19	11-19	9	23	32	20	16	67	17	10	10	3	3	18

Shooting By Period		
1st FG%	11-27	40.7%
3PT%	1-10	10.0%
FT%	4-5	80%
2nd FG%	14-28	50.0%
3PT%	5-9	55.6%
FT%	7-14	50%
GM FG%	25-55	45.5%
3PT%	6-19	31.6%
FT%	11-19	57.9%

Dead Ball Rebounds: 2, 0

Technical Fouls: NONE

TCU - 49

Record: 9-4 (2-3)

NO.	Name	Min	FG			Rebounds			Fouls		TP	AS	TO	ST	Blocks		+/-
			M-A	M-A	M-A	OR	DR	TOT	PF	FD					BS	BA	
34	Kevin Easley	F 28:05	1-4	0-2	0-0	0	9	9	2	1	2	0	1	1	0	0	-17
21	Kevin Samuel	C 27:07	3-7	0-0	0-3	6	5	11	2	4	6	1	3	2	2	0	-15
1	Mike Miles	G 38:59	3-11	3-8	8-8	0	2	2	1	6	17	3	5	1	0	1	-19
4	PJ Fuller	G 25:09	0-2	0-1	0-0	0	0	0	3	0	0	1	4	1	0	0	-16
22	RJ Nembhard	G 31:23	5-14	3-6	1-3	1	5	6	4	4	14	1	2	2	1	1	-24
5	Charles O'Bannon	11:55	1-4	0-1	2-2	1	1	2	1	1	4	0	2	1	0	1	-1
3	Francisco Farabello	11:17	1-1	0-0	0-0	0	0	0	1	2	2	1	2	0	0	0	5
11	Taryn Todd	13:12	0-0	0-0	0-0	0	1	1	0	0	0	2	0	0	0	0	0
23	Jaedon LeDee	12:53	1-2	0-1	2-2	1	1	2	2	2	4	1	1	0	0	0	-3
Team						2	3	5			0		2				
<b>Totals</b>			15-45	6-19	13-18	11	27	38	16	20	49	10	22	8	3	3	-18

Shooting By Period		
1st FG%	7-21	33.3%
3PT%	4-11	36.4%
FT%	10-13	76.9%
2nd FG%	8-24	33.3%
3PT%	2-8	25.0%
FT%	3-5	60%
GM FG%	15-45	33.3%
3PT%	6-19	31.6%
FT%	13-18	72.2%

Dead Ball Rebounds: 1, 0

Technical Fouls: NONE

	BU	TCU
Biggest lead	18 (2 <sup>nd</sup> 1:38)	4 (1 <sup>st</sup> 6:58)
Best Scoring Run	8 (1 <sup>st</sup> 2:59)	5 (1 <sup>st</sup> 12:22)
Lead Changes	6	
Times Tied	4	
Time with Lead	31:06	05:45

	BU	TCU
Points from		
Turnovers	19	9
Paint	36	16
Second Chance	14	9
Fast Breaks	13	7
Bench	6	10

	Period by Period Scoring		
	1st	2nd	TOT
BU	27	40	67
TCU	28	21	49



**Officials:** Gary Maxwell, Kelly Self, James Breeding

**Period 1**

**Quarter Starters:**

<b>TCU</b>	1 Miles M	4 Fuller P	21 Samuel K	22 Nembhard R	34 Easley K
<b>BU</b>	0 Thamba F	11 Vital M	12 Butler J	31 Teague M	45 Mitchell D

Game Time	TCU	Score	Diff	BU
20:00	21 SAMUEL K jumpball lost			0 THAMBA F jumpball won
19:31				45 MITCHELL D 2pt FG in the paint, driving layup missed
19:31				11 VITAL M offensive rebound (1)
19:31	22 NEMBHARD R foul shooting (1 - 1)			11 VITAL M foul drawn (1)
19:31		<b>0-1</b>	<b>-1</b>	11 VITAL M free throw 1 - 2 made (1)
19:31		<b>0-2</b>	<b>-2</b>	11 VITAL M free throw 2 - 2 made (2)
19:02	4 FULLER P 2pt FG outside the paint, pull up jump shot missed			
18:59				0 THAMBA F defensive rebound (1)
18:51				12 BUTLER J 3pt FG , jump shot missed
18:47				31 TEAGUE M offensive rebound (1)
18:40				45 MITCHELL D 3pt FG second chance, jump shot missed
18:36	34 EASLEY K defensive rebound (1)			
18:30	34 EASLEY K 3pt FG , jump shot missed			
18:27				11 VITAL M defensive rebound (2)
18:09				31 TEAGUE M 2pt FG outside the paint, step back jump shot missed
18:05	21 SAMUEL K defensive rebound (1)			
18:00	1 MILES M 2pt FG in the paint, driving layup blocked			
18:00				0 THAMBA F block (1)
18:00	offensive rebound (3)			
17:39	21 SAMUEL K 2pt FG second chance in the paint, layup missed			
17:36	21 SAMUEL K offensive rebound (2)			
17:36	21 SAMUEL K 2pt FG second chance in the paint, jump shot missed			
17:36	21 SAMUEL K offensive rebound (3)			
17:36	21 SAMUEL K foul drawn (1)			0 THAMBA F foul shooting (1 - 1)
17:36	21 SAMUEL K free throw 1 - 2 missed			
17:36	offensive dead ball rebound (1)			
17:36	21 SAMUEL K free throw 2 - 2 missed			
17:35				0 THAMBA F defensive rebound (2)
17:13		<b>0-4</b>	<b>-4</b>	12 BUTLER J 2pt FG in the paint, driving layup made (2)
16:51	1 MILES M 3pt FG , jump shot made (3)	<b>3-4</b>	<b>-1</b>	
16:26		<b>3-7</b>	<b>-4</b>	31 TEAGUE M 3pt FG , jump shot made (3)
16:26				45 MITCHELL D assist (1)
16:10	22 NEMBHARD R foul drawn (1)			11 VITAL M foul personal (1 - 2)
16:10				0 THAMBA F substitution out
16:10				23 TCHAMWA TCHATCHOUA J substitution in
16:10	34 EASLEY K substitution out			
16:10	5 O'BANNON C substitution in			
15:54	5 O'BANNON C turnover bad pass (1)			31 TEAGUE M steal (1)
15:43				45 MITCHELL D 3pt FG from turnover, jump shot missed
15:40	defensive rebound (6)			
15:40	Timeout media			
15:09	turnover shot clock (2)			



Official Basketball Play by Play - First Half  
**Baylor at TCU**  
 01/09/21 Ed and Rae Schollmaier Arena, Fort Worth  
 2020-21 Men's Basketball

**Game Time:** 2:00 PM  
**Game Duration:** 2:03  
**Attendance:** 1,891

**Officials:** Gary Maxwell, Kelly Self, James Breeding

Game Time	TCU	Score	Diff	BU
14:55	21 SAMUEL K steal (1)			11 VITAL M turnover lost ball (1)
14:49	1 MILES M 3pt FG from turnover, jump shot missed			
14:46				23 TCHAMWA TCHATCHOVA J defensive rebound (1)
14:32				31 TEAGUE M 3pt FG , jump shot missed
14:30	22 NEMBHARD R defensive rebound (1)			
14:17	22 NEMBHARD R 2pt FG in the paint, layup made (2)	5-7	-2	
14:17	21 SAMUEL K assist (1)			
14:01				12 BUTLER J 3pt FG , jump shot missed
13:56	defensive rebound (8)			
13:56	1 MILES M substitution out			
13:56	4 FULLER P substitution out			
13:56	21 SAMUEL K substitution out			
13:56	3 FARABELLO F substitution in			
13:56	11 TODD T substitution in			
13:56	23 LEDEE J substitution in			
13:56				11 VITAL M substitution out
13:56				45 MITCHELL D substitution out
13:56				10 FLAGLER A substitution in
13:56				24 MAYER M substitution in
13:46	22 NEMBHARD R 2pt FG in the paint, driving layup missed			
13:43				24 MAYER M defensive rebound (1)
13:36		5-9	-4	12 BUTLER J 2pt FG in the paint, driving layup made (4)
13:36				24 MAYER M assist (1)
13:23	23 LEDEE J 3pt FG , jump shot missed			
13:19	22 NEMBHARD R offensive rebound (2)			
13:17	22 NEMBHARD R 3pt FG second chance, jump shot made (5)	8-9	-1	
13:17	23 LEDEE J assist (1)			
13:07				31 TEAGUE M 2pt FG in the paint, driving layup missed
13:04	23 LEDEE J defensive rebound (1)			
12:55	22 NEMBHARD R substitution out			
12:55	1 MILES M substitution in			
12:55				23 TCHAMWA TCHATCHOVA J substitution out
12:55				31 TEAGUE M substitution out
12:55				0 THAMBA F substitution in
12:55				45 MITCHELL D substitution in
12:52	3 FARABELLO F turnover bad pass (1)			
12:47				10 FLAGLER A 3pt FG from turnover, jump shot missed
12:44	11 TODD T defensive rebound (1)			
12:44	jump ball situation			
12:22	5 O'BANNON C foul drawn (1)			0 THAMBA F foul shooting (2 - 3)
12:22	5 O'BANNON C free throw 1 - 2 made (1)	9-9	0	
12:22				0 THAMBA F substitution out
12:22				11 VITAL M substitution in
12:22	5 O'BANNON C free throw 2 - 2 made (2)	10-9	1	
12:08				10 FLAGLER A 2pt FG outside the paint, step back jump shot missed
12:06	defensive rebound (12)			
11:57	1 MILES M foul drawn (1)			45 MITCHELL D foul personal (1 - 4)
11:57				Timeout media



Official Basketball Play by Play - First Half  
**Baylor at TCU**  
 01/09/21 Ed and Rae Schollmaier Arena, Fort Worth  
 2020-21 Men's Basketball

**Game Time:** 2:00 PM  
**Game Duration:** 2:03  
**Attendance:** 1,891

**Officials:** Gary Maxwell, Kelly Self, James Breeding

Game Time	TCU	Score	Diff	BU
11:57				12 BUTLER J substitution out
11:57				31 TEAGUE M substitution in
11:55	3 FARABELLO F turnover bad pass (2)			10 FLAGLER A steal (1)
11:36				45 MITCHELL D turnover bad pass (1)
11:36	3 FARABELLO F substitution out			
11:36	22 NEMBHARD R substitution in			
11:36				10 FLAGLER A substitution out
11:36				12 BUTLER J substitution in
11:11	22 NEMBHARD R foul offensive (2 - 2)			11 VITAL M foul drawn (2)
11:11	22 NEMBHARD R turnover offensive (1)			
11:11	22 NEMBHARD R substitution out			
11:11	3 FARABELLO F substitution in			
11:00	5 O'BANNON C steal (1)			45 MITCHELL D turnover bad pass (2)
10:42	23 LEDEE J foul offensive (1 - 3)			11 VITAL M foul drawn (3)
10:42	23 LEDEE J turnover offensive (1)			
10:42	5 O'BANNON C substitution out			
10:42	23 LEDEE J substitution out			
10:42	21 SAMUEL K substitution in			
10:42	34 EASLEY K substitution in			
10:38				24 MAYER M substitution out
10:38				23 TCHAMWA TCHATCHOUA J substitution in
10:34		<b>10-11</b>	<b>-1</b>	23 TCHAMWA TCHATCHOUA J 2pt FG from turnover in the paint, dunk, made (2)
10:34				31 TEAGUE M assist (1)
10:13	3 FARABELLO F foul drawn (1)			12 BUTLER J foul personal (1 - 5)
09:57	1 MILES M 3pt FG , jump shot made (6)	<b>13-11</b>	<b>2</b>	
09:38		<b>13-13</b>	<b>0</b>	12 BUTLER J 2pt FG outside the paint, pull up jump shot made (6)
09:38				45 MITCHELL D assist (2)
09:12	3 FARABELLO F 2pt FG in the paint, driving layup made (2)	<b>15-13</b>	<b>2</b>	
09:12	11 TODD T assist (1)			
08:57	3 FARABELLO F foul drawn (2)			23 TCHAMWA TCHATCHOUA J foul offensive (1 - 6)
08:57				23 TCHAMWA TCHATCHOUA J turnover offensive (1)
08:57	11 TODD T substitution out			
08:57	4 FULLER P substitution in			
08:38	4 FULLER P turnover bad pass (1)			12 BUTLER J steal (1)
08:33		<b>15-15</b>	<b>0</b>	12 BUTLER J 2pt FG fast break from turnover in the paint, driving layup made (8)
08:01	1 MILES M 3pt FG , jump shot missed			
07:58				11 VITAL M defensive rebound (3)
07:38				31 TEAGUE M 2pt FG outside the paint, pull up jump shot missed
07:35				31 TEAGUE M offensive rebound (2)
07:33				45 MITCHELL D 3pt FG second chance, jump shot missed
07:30	1 MILES M defensive rebound (1)			
07:26	1 MILES M foul drawn (2)			23 TCHAMWA TCHATCHOUA J foul shooting (2 - 7)
07:26				Timeout media
07:26	1 MILES M free throw fast break 1 - 2 made (7)	<b>16-15</b>	<b>1</b>	
07:26				23 TCHAMWA TCHATCHOUA J substitution out
07:26				10 FLAGLER A substitution in



Official Basketball Play by Play - First Half  
**Baylor at TCU**  
 01/09/21 Ed and Rae Schollmaier Arena, Fort Worth  
 2020-21 Men's Basketball

**Game Time:** 2:00 PM  
**Game Duration:** 2:03  
**Attendance:** 1,891

**Officials:** Gary Maxwell, Kelly Self, James Breeding

Game Time	TCU	Score	Diff	BU
07:26	1 MILES M free throw fast break 2 - 2 made (8)	<b>17-15</b>	<b>2</b>	
07:03	21 SAMUEL K steal (2)			45 MITCHELL D turnover bad pass (3)
06:58	34 EASLEY K 2pt FG fast break from turnover outside the paint, jump shot made (2)	<b>19-15</b>	<b>4</b>	
06:58	3 FARABELLO F assist (1)			
06:48				10 FLAGLER A 2pt FG in the paint, jump shot blocked
06:48	21 SAMUEL K block (1)			
06:42	1 MILES M defensive rebound (2)			
06:41	4 FULLER P 3pt FG , jump shot missed			
06:37				11 VITAL M defensive rebound (4)
06:25				12 BUTLER J 3pt FG , jump shot missed
06:23	21 SAMUEL K defensive rebound (4)			
06:23	3 FARABELLO F substitution out			
06:23	22 NEMBHARD R substitution in			
06:23				11 VITAL M substitution out
06:23				0 THAMBA F substitution in
05:56	22 NEMBHARD R 3pt FG , jump shot missed			
05:53	21 SAMUEL K offensive rebound (5)			
05:52	21 SAMUEL K turnover lost ball (1)			12 BUTLER J steal (2)
05:37				31 TEAGUE M 3pt FG from turnover, jump shot missed
05:34	22 NEMBHARD R defensive rebound (3)			
05:27	22 NEMBHARD R foul drawn (2)			10 FLAGLER A foul personal (1 - 8)
05:27	22 NEMBHARD R 1&1 free throw 1 missed			
05:26				12 BUTLER J defensive rebound (1)
05:18		<b>19-17</b>	<b>2</b>	12 BUTLER J 2pt FG in the paint, driving layup made (10)
04:58	21 SAMUEL K turnover bad pass (2)			
04:58	22 NEMBHARD R substitution out			
04:58	11 TODD T substitution in			
04:58				10 FLAGLER A substitution out
04:58				4 CRYER L substitution in
04:49		<b>19-19</b>	<b>0</b>	45 MITCHELL D 2pt FG from turnover in the paint, driving layup made (2)
04:26	1 MILES M turnover bad pass (1)			12 BUTLER J steal (3)
04:16	4 FULLER P steal (1)			12 BUTLER J turnover bad pass (1)
04:16	11 TODD T substitution out			
04:16	21 SAMUEL K substitution out			
04:16	22 NEMBHARD R substitution in			
04:16	23 LEDEE J substitution in			
04:16				31 TEAGUE M substitution out
04:16				24 MAYER M substitution in
04:09	34 EASLEY K turnover bad pass (1)			
03:42		<b>19-21</b>	<b>-2</b>	0 THAMBA F 2pt FG from turnover in the paint, layup made (2)
03:42				24 MAYER M assist (2)
03:42	4 FULLER P foul shooting (1 - 4)			0 THAMBA F foul drawn (1)
03:42	Timeout media			
03:42	34 EASLEY K substitution out			
03:42	5 O'BANNON C substitution in			
03:42				0 THAMBA F free throw 1 - 1 missed
03:40	5 O'BANNON C defensive rebound (1)			



Official Basketball Play by Play - First Half  
**Baylor at TCU**  
 01/09/21 Ed and Rae Schollmaier Arena, Fort Worth  
 2020-21 Men's Basketball

**Game Time:** 2:00 PM  
**Game Duration:** 2:03  
**Attendance:** 1,891

**Officials:** Gary Maxwell, Kelly Self, James Breeding

Game Time	TCU	Score	Diff	BU
03:18	5 O'BANNON C 2pt FG outside the paint, pull up jump shot blocked			
03:18				24 MAYER M block (1)
03:17	offensive rebound (19)			
03:11	turnover shot clock (12)			
02:59		<b>19-23</b>	<b>-4</b>	24 MAYER M 2pt FG from turnover in the paint, pull up jump shot made (2)
02:34	1 MILES M 3pt FG , jump shot missed			
02:32	23 LEDEE J offensive rebound (2)			
02:32	23 LEDEE J foul drawn (1)			0 THAMBA F foul shooting (3 - 9)
02:32	23 LEDEE J free throw 1 - 2 made (1)	<b>20-23</b>	<b>-3</b>	
02:32	5 O'BANNON C substitution out			
02:32	22 NEMBHARD R substitution out			
02:32	3 FARABELLO F substitution in			
02:32	34 EASLEY K substitution in			
02:32				0 THAMBA F substitution out
02:32				23 TCHAMWA TCHATCHOVA J substitution in
02:32	23 LEDEE J free throw 2 - 2 made (2)	<b>21-23</b>	<b>-2</b>	
02:07	4 FULLER P foul shooting (2 - 5)			45 MITCHELL D foul drawn (1)
02:07		<b>21-24</b>	<b>-3</b>	45 MITCHELL D free throw 1 - 2 made (3)
02:07	3 FARABELLO F substitution out			
02:07	4 FULLER P substitution out			
02:07	11 TODD T substitution in			
02:07	22 NEMBHARD R substitution in			
02:07		<b>21-25</b>	<b>-4</b>	45 MITCHELL D free throw 2 - 2 made (4)
01:46	1 MILES M foul drawn (3)			24 MAYER M foul personal (1 - 10)
01:46	1 MILES M free throw 1 - 2 made (9)	<b>22-25</b>	<b>-3</b>	
01:46	22 NEMBHARD R substitution out			
01:46	4 FULLER P substitution in			
01:46	1 MILES M free throw 2 - 2 made (10)	<b>23-25</b>	<b>-2</b>	
01:34				23 TCHAMWA TCHATCHOVA J 2pt FG in the paint, jump shot missed
01:31	34 EASLEY K defensive rebound (2)			
01:02	1 MILES M 2pt FG in the paint, driving layup missed			
00:59				24 MAYER M defensive rebound (2)
00:55		<b>23-27</b>	<b>-4</b>	12 BUTLER J 2pt FG fast break in the paint, driving layup made (12)
00:55				24 MAYER M assist (3)
00:51	Timeout 30 Sec			
00:51	4 FULLER P substitution out			
00:51	22 NEMBHARD R substitution in			
00:51				23 TCHAMWA TCHATCHOVA J substitution out
00:51				11 VITAL M substitution in
00:29	1 MILES M foul drawn (4)			11 VITAL M foul shooting (2 - 11)
00:29	1 MILES M free throw 1 - 2 made (11)	<b>24-27</b>	<b>-3</b>	
00:29	22 NEMBHARD R substitution out			
00:29	4 FULLER P substitution in			
00:29	1 MILES M free throw 2 - 2 made (12)	<b>25-27</b>	<b>-2</b>	
00:29	23 LEDEE J substitution out			
00:29	21 SAMUEL K substitution in			



Official Basketball Play by Play - First Half  
**Baylor at TCU**  
01/09/21 Ed and Rae Schollmaier Arena, Fort Worth  
2020-21 Men's Basketball

**Game Time:** 2:00 PM  
**Game Duration:** 2:03  
**Attendance:** 1,891

**Officials:** Gary Maxwell, Kelly Self, James Breeding

Game Time	TCU	Score	Diff	BU
00:00	1 MILES M steal (1)			12 BUTLER J turnover lost ball (2)
00:00	1 MILES M 3pt FG from turnover, jump shot made (15)	<b>28-27</b>	<b>1</b>	
<b>END OF PERIOD</b>				
<b>TCU 28-27 BU</b>				



**Baylor at TCU**

01/09/21 Ed and Rae Schollmaier Arena, Fort Worth  
2020-21 Men's Basketball

Game Time: 2:00 PM  
Game Duration: 2:03  
Attendance: 1,891

Officials: Gary Maxwell, Kelly Self, James Breeding

**Baylor - 27**

NO.	Name	F	Min	FG	3P	FT	Rebounds			Fouls		TP	AS	TO	ST	Blocks		+/-
				M-A	M-A	M-A	OR	DR	TOT	PF	FD					BS	BA	
0	Flo Thamba	F	08:14	1-1	0-0	0-1	0	2	2	3	1	2	0	0	0	1	0	10
11	Mark Vital	F	12:55	0-0	0-0	2-2	1	3	4	2	3	2	0	1	0	0	0	-7
12	Jared Butler	G	19:39	6-9	0-3	0-0	0	1	1	1	0	12	0	2	3	0	0	-1
31	MaCio Teague	G	14:46	1-6	1-3	0-0	2	0	2	0	0	3	1	0	1	0	0	2
45	Davion Mitchell	G	18:59	1-5	0-3	2-2	0	0	0	1	1	4	2	3	0	0	0	0
23	Jonathan Tchamwa Tchatchoua		08:07	1-2	0-0	0-0	0	1	1	2	0	2	0	1	0	0	0	-2
10	Adam Flagler		04:48	0-3	0-1	0-0	0	0	0	1	0	0	0	0	1	0	1	-4
24	Matthew Mayer		07:34	1-1	0-0	0-0	0	2	2	1	0	2	3	0	0	1	0	-4
4	LJ Cryer		04:58	0-0	0-0	0-0	0	0	0	0	0	0	0	0	0	0	0	1
Team							0	0	0			0		0				
<b>Totals</b>				11-27	1-10	4-5	3	9	12	11	5	27	6	7	5	2	1	-1

Shooting By Period		
1st FG%	11-27	40.7%
3PT%	1-10	10.0%
FT%	4-5	80%
GM FG%	11-27	40.7%
3PT%	1-10	10.0%
FT%	4-5	80.0%

Dead Ball Rebounds: 0, 0

Technical Fouls: NONE

**TCU - 28**

NO.	Name	F	Min	FG	3P	FT	Rebounds			Fouls		TP	AS	TO	ST	Blocks		+/-
				M-A	M-A	M-A	OR	DR	TOT	PF	FD					BS	BA	
34	Kevin Easley	F	13:22	1-2	0-1	0-0	0	2	2	0	0	2	0	1	0	0	0	-3
21	Kevin Samuel	C	12:59	0-2	0-0	0-2	3	2	5	0	1	0	1	2	2	1	0	0
1	Mike Miles	G	18:59	3-8	3-6	6-6	0	2	2	0	4	15	0	1	1	0	1	0
4	PJ Fuller	G	14:17	0-2	0-1	0-0	0	0	0	2	0	0	0	1	1	0	0	-4
22	RJ Nembhard	G	11:23	2-4	1-2	0-1	1	2	3	2	2	5	0	1	0	0	0	-5
5	Charles O'Bannon		06:38	0-1	0-0	2-2	0	1	1	0	1	2	0	1	1	0	1	4
3	Francisco Farabello		07:33	1-1	0-0	0-0	0	0	0	0	2	2	1	2	0	0	0	6
11	Taryn Todd		07:48	0-0	0-0	0-0	0	1	1	0	0	0	1	0	0	0	0	6
23	Jaedon LeDee		07:01	0-1	0-1	2-2	1	1	2	1	1	2	1	1	0	0	0	1
Team							2	3	5			0		2				
<b>Totals</b>				7-21	4-11	10-13	7	14	21	5	11	28	4	12	5	1	2	1

Shooting By Period		
1st FG%	7-21	33.3%
3PT%	4-11	36.4%
FT%	10-13	76.9%
GM FG%	7-21	33.3%
3PT%	4-11	36.4%
FT%	10-13	76.9%

Dead Ball Rebounds: 1, 0

Technical Fouls: NONE

	BU	TCU
Biggest lead	4 (1st 17:13)	4 (1st 6:58)
Best Scoring Run	8 (1st 2:59)	5 (1st 12:22)
Lead Changes	5	
Times Tied	4	
Time with Lead	11:27	05:24

	BU	TCU
Points from		
Turnovers	10	5
Paint	18	4
Second Chance	2	5
Fast Breaks	4	4
Bench	4	6

	Period by Period Scoring		
	1st	2nd	TOT
BU	27	40	67
TCU	28	21	49



**Baylor at TCU**01/09/21 Ed and Rae Schollmaier Arena, Fort Worth  
2020-21 Men's Basketball

Game Time: 2:00 PM

Game Duration: 2:03

Attendance: 1,891

Officials: Gary Maxwell, Kelly Self, James Breeding

**Period 2****Quarter Starters:**

<b>TCU</b>	1 Miles M	4 Fuller P	21 Samuel K	22 Nembhard R	34 Easley K
<b>BU</b>	0 Thamba F	11 Vital M	12 Butler J	31 Teague M	45 Mitchell D

Game Time	TCU	Score	Diff	BU
20:00	11 TODD T substitution out			
20:00	22 NEMBHARD R substitution in			
20:00				4 CRYER L substitution out
20:00				24 MAYER M substitution out
20:00				0 THAMBA F substitution in
20:00				31 TEAGUE M substitution in
19:39		<b>28-29</b>	<b>-1</b>	45 MITCHELL D 2pt FG in the paint, driving layup made (6)
19:39				12 BUTLER J assist (1)
19:39	21 SAMUEL K foul shooting (1 - 1)			45 MITCHELL D foul drawn (2)
19:39				45 MITCHELL D free throw 1 - 1 missed
19:37	21 SAMUEL K defensive rebound (6)			
19:24	22 NEMBHARD R 2pt FG in the paint, driving layup missed			
19:22	21 SAMUEL K offensive rebound (7)			
19:20	21 SAMUEL K turnover bad pass (3)			12 BUTLER J steal (4)
19:11				45 MITCHELL D 3pt FG from turnover, jump shot missed
19:08	34 EASLEY K defensive rebound (3)			
18:49	4 FULLER P turnover bad pass (2)			0 THAMBA F steal (1)
18:45	4 FULLER P foul shooting (3 - 2)			12 BUTLER J foul drawn (1)
18:45		<b>28-30</b>	<b>-2</b>	12 BUTLER J free throw fast break 1 - 2 made (13)
18:45	4 FULLER P substitution out			
18:45	11 TODD T substitution in			
18:45				12 BUTLER J free throw fast break 2 - 2 missed
18:44				11 VITAL M offensive rebound (5)
18:42		<b>28-32</b>	<b>-4</b>	11 VITAL M 2pt FG second chance in the paint, layup made (4)
18:21	22 NEMBHARD R 2pt FG in the paint, pull up jump shot missed			
18:18				0 THAMBA F defensive rebound (3)
17:55				31 TEAGUE M 2pt FG in the paint, layup missed
17:53				0 THAMBA F offensive rebound (4)
17:49	34 EASLEY K foul shooting (1 - 3)			11 VITAL M foul drawn (4)
17:49		<b>28-33</b>	<b>-5</b>	11 VITAL M free throw 1 - 2 made (5)
17:49	34 EASLEY K substitution out			
17:49	5 O'BANNON C substitution in			
17:49		<b>28-34</b>	<b>-6</b>	11 VITAL M free throw 2 - 2 made (6)
17:29	21 SAMUEL K 2pt FG in the paint, layup made (2)	<b>30-34</b>	<b>-4</b>	
17:29	1 MILES M assist (1)			
17:14	21 SAMUEL K foul personal (2 - 4)			31 TEAGUE M foul drawn (1)
17:07		<b>30-37</b>	<b>-7</b>	12 BUTLER J 3pt FG , jump shot made (16)
17:07				45 MITCHELL D assist (3)
16:39	21 SAMUEL K 2pt FG in the paint, jump shot made (4)	<b>32-37</b>	<b>-5</b>	
16:39	11 TODD T assist (2)			
16:24	5 O'BANNON C foul shooting (1 - 5)			12 BUTLER J foul drawn (2)
16:24		<b>32-38</b>	<b>-6</b>	12 BUTLER J free throw 1 - 2 made (17)
16:24	11 TODD T substitution out			



**Baylor at TCU**

01/09/21 Ed and Rae Schollmaier Arena, Fort Worth  
2020-21 Men's Basketball

**Game Time:** 2:00 PM  
**Game Duration:** 2:03  
**Attendance:** 1,891

**Officials:** Gary Maxwell, Kelly Self, James Breeding

Game Time	TCU	Score	Diff	BU
16:24	3 FARABELLO F substitution in			
16:24				0 THAMBA F substitution out
16:24				23 TCHAMWA TCHATCHOUA J substitution in
16:24				12 BUTLER J free throw 2 - 2 missed
16:23	21 SAMUEL K defensive rebound (8)			
15:52	5 O'BANNON C 2pt FG outside the paint, jump shot missed			
15:50				12 BUTLER J defensive rebound (2)
15:46		<b>32-40</b>	<b>-8</b>	11 VITAL M 2pt FG fast break in the paint, layup made (8)
15:46				12 BUTLER J assist (2)
15:46	Timeout 60 Sec			
15:46	5 O'BANNON C substitution out			
15:46	21 SAMUEL K substitution out			
15:46	23 LEDEE J substitution in			
15:46	34 EASLEY K substitution in			
15:46				45 MITCHELL D substitution out
15:46				24 MAYER M substitution in
15:30	22 NEMBHARD R 2pt FG in the paint, driving layup blocked			
15:30				23 TCHAMWA TCHATCHOUA J block (1)
15:25				12 BUTLER J defensive rebound (3)
15:19	34 EASLEY K steal (1)			24 MAYER M turnover bad pass (1)
15:15	1 MILES M 2pt FG from turnover in the paint, alleyoop missed			
15:11				11 VITAL M defensive rebound (6)
15:07	22 NEMBHARD R steal (1)			31 TEAGUE M turnover lost ball (1)
15:02	22 NEMBHARD R 2pt FG fast break from turnover in the paint, dunk, made (7)	<b>34-40</b>	<b>-6</b>	
15:02	1 MILES M assist (2)			
14:39				31 TEAGUE M 2pt FG in the paint, pull up jump shot missed
14:38	34 EASLEY K defensive rebound (4)			
14:38	34 EASLEY K foul drawn (1)			11 VITAL M foul personal (3 - 1)
14:38	Timeout media			
14:38				12 BUTLER J substitution out
14:38				31 TEAGUE M substitution out
14:38				10 FLAGLER A substitution in
14:38				45 MITCHELL D substitution in
14:24	1 MILES M foul offensive (1 - 6)			24 MAYER M foul drawn (1)
14:24	1 MILES M turnover offensive (2)			
14:07	jump ball situation			
14:07	22 NEMBHARD R steal (2)			11 VITAL M turnover lost ball (2)
14:07				23 TCHAMWA TCHATCHOUA J substitution out
14:07				0 THAMBA F substitution in
13:46	23 LEDEE J foul drawn (2)			24 MAYER M foul personal (2 - 2)
13:46				24 MAYER M substitution out
13:46				12 BUTLER J substitution in
13:44	23 LEDEE J 2pt FG from turnover in the paint, hook shot made (4)	<b>36-40</b>	<b>-4</b>	
13:44	22 NEMBHARD R assist (1)			
13:26		<b>36-42</b>	<b>-6</b>	45 MITCHELL D 2pt FG in the paint, layup made (8)
13:26				10 FLAGLER A assist (1)
13:26	34 EASLEY K foul shooting (2 - 7)			45 MITCHELL D foul drawn (3)
13:26		<b>36-43</b>	<b>-7</b>	45 MITCHELL D free throw 1 - 1 made (9)



**Baylor at TCU**

**Officials:** Gary Maxwell, Kelly Self, James Breeding

Game Time	TCU	Score	Diff	BU
13:04	34 EASLEY K 2pt FG in the paint, layup missed			
13:02				0 THAMBA F defensive rebound (5)
13:02	jump ball situation			
12:40	3 FARABELLO F foul personal (1 - 8)			10 FLAGLER A foul drawn (1)
12:40	3 FARABELLO F substitution out			
12:40	4 FULLER P substitution in			
12:40				10 FLAGLER A 1&1 free throw 1 missed
12:39	22 NEMBHARD R defensive rebound (4)			
12:19	1 MILES M 3pt FG , jump shot missed			
12:18				0 THAMBA F defensive rebound (6)
12:18	23 LEDEE J foul personal (2 - 9)			0 THAMBA F foul drawn (2)
12:18	23 LEDEE J substitution out			
12:18	21 SAMUEL K substitution in			
12:18				0 THAMBA F 1&1 free throw 1 missed
12:17	34 EASLEY K defensive rebound (5)			
11:57	22 NEMBHARD R 2pt FG outside the paint, jump shot missed			
11:55				0 THAMBA F defensive rebound (7)
11:47				11 VITAL M 2pt FG in the paint, layup missed
11:43	34 EASLEY K defensive rebound (6)			
11:42	1 MILES M foul drawn (5)			12 BUTLER J foul personal (2 - 3)
11:42	Timeout media			
11:42				11 VITAL M substitution out
11:42				24 MAYER M substitution in
11:37	22 NEMBHARD R 3pt FG , jump shot made (10)	<b>39-43</b>	<b>-4</b>	
11:37	1 MILES M assist (3)			
11:13				45 MITCHELL D 2pt FG in the paint, driving layup blocked
11:13	21 SAMUEL K block (2)			
11:09	34 EASLEY K defensive rebound (7)			
11:09	jump ball situation			
11:09				10 FLAGLER A substitution out
11:09				31 TEAGUE M substitution in
10:55	1 MILES M turnover bad pass (3)			
10:50		<b>39-45</b>	<b>-6</b>	12 BUTLER J 2pt FG fast break from turnover in the paint, driving layup made (19)
10:20	22 NEMBHARD R 3pt FG , jump shot made (13)	<b>42-45</b>	<b>-3</b>	
10:20	4 FULLER P assist (1)			
09:56		<b>42-47</b>	<b>-5</b>	31 TEAGUE M 2pt FG in the paint, pull up jump shot made (5)
09:56				45 MITCHELL D assist (4)
09:45	22 NEMBHARD R foul drawn (3)			45 MITCHELL D foul personal (2 - 4)
09:45				0 THAMBA F substitution out
09:45				24 MAYER M substitution out
09:45				11 VITAL M substitution in
09:45				23 TCHAMWA TCHATCHOUA J substitution in
09:34	21 SAMUEL K foul drawn (2)			12 BUTLER J foul personal (3 - 5)
09:32	4 FULLER P turnover travel (3)			
09:10		<b>42-50</b>	<b>-8</b>	12 BUTLER J 3pt FG from turnover, jump shot made (22)
09:10				45 MITCHELL D assist (5)
08:50	34 EASLEY K 3pt FG , jump shot missed			
08:47				12 BUTLER J defensive rebound (4)



**Baylor at TCU**

01/09/21 Ed and Rae Schollmaier Arena, Fort Worth  
2020-21 Men's Basketball

**Game Time:** 2:00 PM  
**Game Duration:** 2:03  
**Attendance:** 1,891

**Officials:** Gary Maxwell, Kelly Self, James Breeding

Game Time	TCU	Score	Diff	BU
08:44		<b>42-52</b>	<b>-10</b>	31 TEAGUE M 2pt FG fast break in the paint, dunk, made (7)
08:44				12 BUTLER J assist (3)
08:43	Timeout 30 Sec			
08:30	4 FULLER P turnover bad pass (4)			
08:16	jump ball situation			
08:16	4 FULLER P substitution out			
08:16	11 TODD T substitution in			
08:12	22 NEMBHARD R foul personal (3 - 10)			11 VITAL M foul drawn (5)
08:12				11 VITAL M free throw 1 - 2 missed
08:12				offensive dead ball rebound (1)
08:12		<b>42-53</b>	<b>-11</b>	11 VITAL M free throw 2 - 2 made (9)
07:53	22 NEMBHARD R 3pt FG , jump shot missed			
07:52	21 SAMUEL K offensive rebound (9)			
07:52	21 SAMUEL K foul drawn (3)			11 VITAL M foul personal (4 - 6)
07:52	Timeout media			
07:52	34 EASLEY K substitution out			
07:52	5 O'BANNON C substitution in			
07:52				11 VITAL M substitution out
07:52				24 MAYER M substitution in
07:30	21 SAMUEL K 2pt FG second chance outside the paint, jump shot missed			
07:26	5 O'BANNON C offensive rebound (2)			
07:26	5 O'BANNON C 2pt FG second chance in the paint, layup made (4)	<b>44-53</b>	<b>-9</b>	
07:10		<b>44-56</b>	<b>-12</b>	12 BUTLER J 3pt FG , jump shot made (25)
07:10				31 TEAGUE M assist (2)
06:38	1 MILES M foul drawn (6)			23 TCHAMWA TCHATCHOUA J foul shooting (3 - 7)
06:38	1 MILES M free throw 1 - 2 made (16)	<b>45-56</b>	<b>-11</b>	
06:38	1 MILES M free throw 2 - 2 made (17)	<b>46-56</b>	<b>-10</b>	
06:18				12 BUTLER J 2pt FG in the paint, jump shot blocked
06:18	22 NEMBHARD R block (1)			
06:14				12 BUTLER J offensive rebound (5)
06:12		<b>46-58</b>	<b>-12</b>	23 TCHAMWA TCHATCHOUA J 2pt FG second chance in the paint, dunk, made (4)
06:12				45 MITCHELL D assist (6)
05:53	5 O'BANNON C turnover lost ball (2)			23 TCHAMWA TCHATCHOUA J steal (1)
05:47				31 TEAGUE M 3pt FG from turnover, jump shot missed
05:43				23 TCHAMWA TCHATCHOUA J offensive rebound (2)
05:30				12 BUTLER J 3pt FG from turnover second chance, jump shot missed
05:25	22 NEMBHARD R defensive rebound (5)			
05:15	5 O'BANNON C 3pt FG , jump shot missed			
05:13				defensive rebound (25)
05:13	11 TODD T substitution out			
05:13	4 FULLER P substitution in			
04:53				23 TCHAMWA TCHATCHOUA J 2pt FG in the paint, alleyoop missed
04:50				12 BUTLER J offensive rebound (6)
04:48		<b>46-61</b>	<b>-15</b>	31 TEAGUE M 3pt FG second chance, jump shot made (10)
04:48				12 BUTLER J assist (4)
04:38	22 NEMBHARD R 2pt FG in the paint, driving layup missed			



**Baylor at TCU**

01/09/21 Ed and Rae Schollmaier Arena, Fort Worth  
2020-21 Men's Basketball

**Game Time:** 2:00 PM  
**Game Duration:** 2:03  
**Attendance:** 1,891

**Officials:** Gary Maxwell, Kelly Self, James Breeding

Game Time	TCU	Score	Diff	BU
04:38	21 SAMUEL K offensive rebound (10)			
04:38	21 SAMUEL K 2pt FG second chance in the paint, layup made (6)	<b>48-61</b>	<b>-13</b>	
04:38	21 SAMUEL K foul drawn (4)			45 MITCHELL D foul shooting (3 - 8)
04:38	5 O'BANNON C substitution out			
04:38	34 EASLEY K substitution in			
04:38	21 SAMUEL K free throw 1 - 1 missed			
04:37				12 BUTLER J defensive rebound (7)
04:11	22 NEMBHARD R foul shooting (4 - 11)			45 MITCHELL D foul drawn (4)
04:11				45 MITCHELL D free throw 1 - 2 missed
04:11				offensive dead ball rebound (2)
04:11		<b>48-62</b>	<b>-14</b>	45 MITCHELL D free throw 2 - 2 made (10)
04:11				Timeout 30 Sec
04:11				24 MAYER M substitution out
04:11				11 VITAL M substitution in
03:50	21 SAMUEL K 2pt FG in the paint, layup missed			
03:50				defensive rebound (28)
03:25				23 TCHAMWA TCHATCHOUA J 2pt FG in the paint, alleyoop missed
03:22	21 SAMUEL K defensive rebound (11)			
03:07	22 NEMBHARD R 3pt FG , jump shot missed			
03:04				12 BUTLER J defensive rebound (8)
02:35				11 VITAL M 2pt FG outside the paint, jump shot missed
02:33	22 NEMBHARD R defensive rebound (6)			
02:27	22 NEMBHARD R foul drawn (4)			45 MITCHELL D foul shooting (4 - 9)
02:27	22 NEMBHARD R free throw fast break 1 - 2 made (14)	<b>49-62</b>	<b>-13</b>	
02:27	22 NEMBHARD R free throw fast break 2 - 2 missed			
02:25				defensive rebound (30)
02:24				11 VITAL M substitution out
02:24				10 FLAGLER A substitution in
02:24	21 SAMUEL K substitution out			
02:24	23 LEDEE J substitution in			
01:58				31 TEAGUE M 3pt FG , jump shot missed
01:54				23 TCHAMWA TCHATCHOUA J offensive rebound (3)
01:53		<b>49-65</b>	<b>-16</b>	12 BUTLER J 3pt FG second chance, jump shot made (28)
01:53				23 TCHAMWA TCHATCHOUA J assist (1)
01:43	1 MILES M turnover lost ball (4)			
01:38		<b>49-67</b>	<b>-18</b>	31 TEAGUE M 2pt FG fast break from turnover in the paint, dunk, made (12)
01:11	22 NEMBHARD R turnover bad pass (2)			12 BUTLER J steal (5)
01:01				23 TCHAMWA TCHATCHOUA J 2pt FG from turnover in the paint, jump shot missed
00:57	34 EASLEY K defensive rebound (8)			
00:43	1 MILES M 3pt FG , jump shot missed			
00:39				10 FLAGLER A defensive rebound (1)
00:10				12 BUTLER J 2pt FG in the paint, turnaround jump shot missed
00:06	34 EASLEY K defensive rebound (9)			
00:04	1 MILES M turnover bad pass (5)			45 MITCHELL D steal (1)
<b>END OF GAME</b>				
<b>TCU 49-67 BU</b>				



**Baylor at TCU**

01/09/21 Ed and Rae Schollmaier Arena, Fort Worth  
2020-21 Men's Basketball

Game Time: 2:00 PM  
Game Duration: 2:03  
Attendance: 1,891

Officials: Gary Maxwell, Kelly Self, James Breeding

**Baylor - 40**

NO.	Name	F	Min	FG			Rebounds			Fouls		TP	AS	TO	ST	Blocks		+/-
				M-A	M-A	M-A	OR	DR	TOT	PF	FD					BS	BA	
0	Flo Thamba	F	07:58	0-0	0-0	0-1	1	4	5	0	1	0	0	0	1	0	0	6
11	Mark Vital	F	11:58	2-4	0-0	3-4	1	1	2	2	2	7	0	1	0	0	0	13
12	Jared Butler	G	19:08	5-8	4-5	2-4	2	5	7	2	2	16	4	0	2	0	1	19
31	MaCio Teague	G	16:31	4-8	1-3	0-0	0	0	0	0	1	9	1	1	0	0	0	21
45	Davion Mitchell	G	18:52	2-4	0-1	2-4	0	0	0	3	3	6	4	0	1	0	1	21
4	LJ Cryer		00:00															
23	Jonathan Tchamwa Tchatchoua		12:02	1-4	0-0	0-0	2	0	2	1	0	2	1	0	1	1	0	13
24	Matthew Mayer		07:38	0-0	0-0	0-0	0	0	0	1	1	0	0	1	0	0	0	-1
10	Adam Flagler		05:53	0-0	0-0	0-1	0	1	1	0	1	0	1	0	0	0	0	3
Team							0	3	3			0		0				
<b>Totals</b>				14-28	5-9	7-14	6	14	20	9	11	40	11	3	5	1	2	19

Shooting By Period		
2 <sup>nd</sup> FG%	14-28	50.0%
3PT%	5-9	55.6%
FT%	7-14	50%
GM FG%	14-28	50.0%
3PT%	5-9	55.6%
FT%	7-14	50.0%

Dead Ball Rebounds: 2, 0

Technical Fouls: NONE

**TCU - 21**

NO.	Name	F	Min	FG			Rebounds			Fouls		TP	AS	TO	ST	Blocks		+/-
				M-A	M-A	M-A	OR	DR	TOT	PF	FD					BS	BA	
34	Kevin Easley	F	14:43	0-2	0-1	0-0	0	7	7	2	1	0	0	0	1	0	0	-14
21	Kevin Samuel	C	14:08	3-5	0-0	0-1	3	3	6	2	3	6	0	1	0	1	0	-15
1	Mike Miles	G	20:00	0-3	0-2	2-2	0	0	0	1	2	2	3	4	0	0	0	-19
4	PJ Fuller	G	10:52	0-0	0-0	0-0	0	0	0	1	0	0	1	3	0	0	0	-12
22	RJ Nembhard	G	20:00	3-10	2-4	1-2	0	3	3	2	2	9	1	1	2	1	1	-19
11	Taryn Todd		05:24	0-0	0-0	0-0	0	0	0	0	0	0	1	0	0	0	0	-6
5	Charles O'Bannon		05:17	1-3	0-1	0-0	1	0	1	1	0	2	0	1	0	0	0	-5
3	Francisco Farabello		03:44	0-0	0-0	0-0	0	0	0	1	0	0	0	0	0	0	0	-1
23	Jaedon LeDee		05:52	1-1	0-0	0-0	0	0	0	1	1	2	0	0	0	0	0	-4
Team							0	0	0			0		0				
<b>Totals</b>				8-24	2-8	3-5	4	13	17	11	9	21	6	10	3	2	1	-19

Shooting By Period		
2 <sup>nd</sup> FG%	8-24	33.3%
3PT%	2-8	25.0%
FT%	3-5	60%
GM FG%	8-24	33.3%
3PT%	2-8	25.0%
FT%	3-5	60.0%

Dead Ball Rebounds: 0, 0

Technical Fouls: NONE

	BU	TCU
Biggest lead	18 (2 <sup>nd</sup> 1:38)	0 (1 <sup>st</sup> 20:00)
Best Scoring Run	8 (2 <sup>nd</sup> 8:12)	4 (2 <sup>nd</sup> 13:44)
Lead Changes	1	
Times Tied	0	
Time with Lead	19:39	00:00

	BU	TCU
Points from		
Turnovers	9	4
Paint	18	12
Second Chance	12	4
Fast Breaks	9	3
Bench	2	4

	Period by Period Scoring		
	1st	2nd	TOT
BU	27	40	67
TCU	28	21	49



**Baylor at TCU**

01/09/21 Ed and Rae Schollmaier Arena, Fort Worth  
2020-21 Men's Basketball

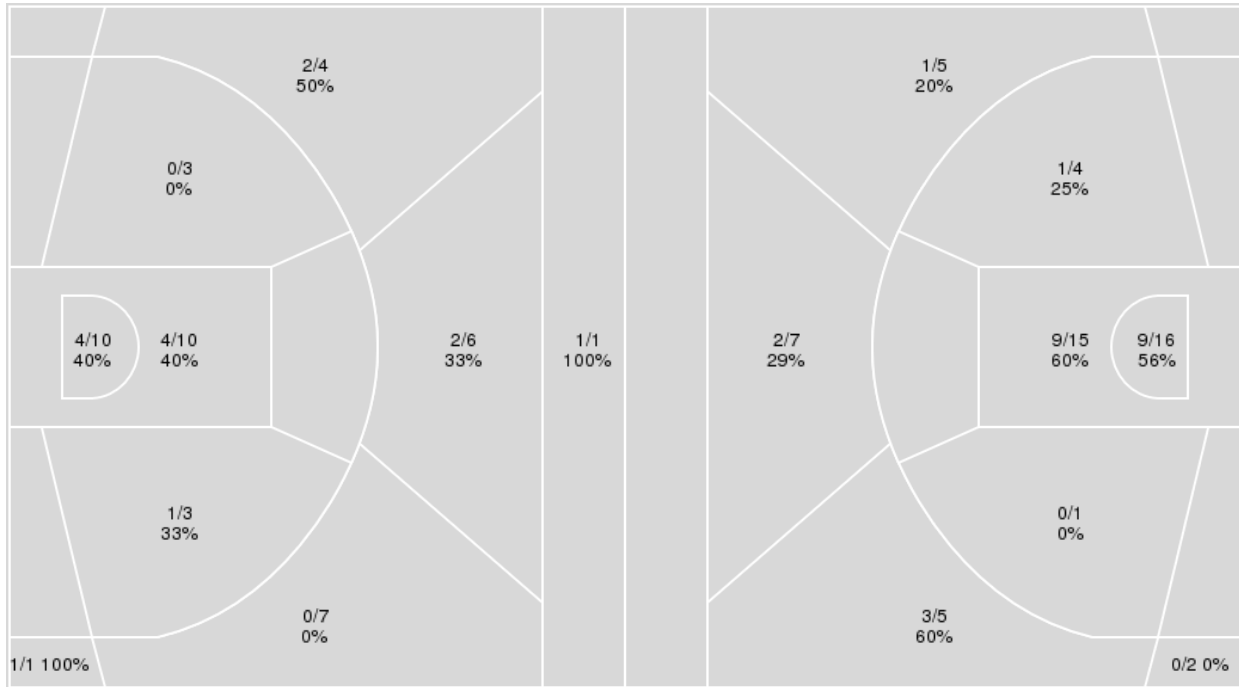
**Game Time:** 2:00 PM  
**Game Duration:** 2:03  
**Attendance:** 1,891

**Officials:** Gary Maxwell, Kelly Self, James Breeding

{ Players => 0, 1, 2, 3, 4, 5, 10, 11, 13, 15, 21, 22, 23, 30, 31, 34; } FG { Players => All; } FG Types => All; Results => All;  
Types => All; Results => All;

**TCU**

**Baylor**



TCU	M/A	%
Field Goals	15/45	33
2 Points	9/26	35
3 Points	6/19	32
Free Throws	13/18	72

Baylor	M/A	%
Field Goals	25/55	45
2 Points	19/36	53
3 Points	6/19	32
Free Throws	11/19	58

**Baylor at TCU**01/09/21 Ed and Rae Schollmaier Arena, Fort Worth  
2020-21 Men's Basketball

Game Time: 2:00 PM

Game Duration: 2:03

Attendance: 1,891

Officials: Gary Maxwell, Kelly Self, James Breeding

**Baylor**

No	Name	Mins		Score		Points Diff		Points per Min		Assists		Rebounds		Steals		Turnovers	
		On	Off	On	Off	On	Off	On	Off	On	Off	On	Off	On	Off	On	Off
0	Flo Thamba	16:12	23:48	33 - 17	34 - 32	16	2	2.04	1.43	6	11	12	20	4	6	1	9
4	LJ Cryer	04:58	35:02	10 - 9	57 - 40	1	17	2.01	1.63	2	15	1	31	1	9	2	8
10	Adam Flagler	10:41	29:19	12 - 13	55 - 36	-1	19	1.12	1.88	3	14	8	24	4	6	3	7
11	Mark Vital	24:53	15:07	35 - 29	32 - 20	6	12	1.41	2.12	9	8	22	10	5	5	9	1
12	Jared Butler	38:47	01:13	67 - 49	0 - 0	18	0	1.73	0.00	17	0	32	0	9	1	8	2
23	Jonathan Tchamwa Tchatchoua	20:09	19:51	34 - 23	33 - 26	11	7	1.69	1.66	11	6	19	13	5	5	5	5
24	Matthew Mayer	15:12	24:48	23 - 28	44 - 21	-5	23	1.51	1.77	7	10	9	23	2	8	6	4
31	MaCio Teague	31:17	08:43	56 - 33	11 - 16	23	-5	1.79	1.26	14	3	28	4	10	0	8	2
45	Davion Mitchell	37:51	02:09	65 - 44	2 - 5	21	-3	1.72	0.93	16	1	29	3	10	0	8	2

**TCU**

No	Name	Mins		Score		Points Diff		Points per Min		Assists		Rebounds		Steals		Turnovers	
		On	Off	On	Off	On	Off	On	Off	On	Off	On	Off	On	Off	On	Off
1	Mike Miles	38:59	01:01	46 - 65	3 - 2	-19	1	1.18	2.95	9	1	36	2	8	0	22	0
3	Francisco Farabello	11:17	28:43	19 - 14	30 - 53	5	-23	1.68	1.04	5	5	9	29	5	3	5	17
4	PJ Fuller	25:09	14:51	25 - 41	24 - 26	-16	-2	0.99	1.62	4	6	29	9	4	4	16	6
5	Charles O'Bannon	11:55	28:05	18 - 19	31 - 48	-1	-17	1.51	1.10	4	6	14	24	2	6	8	14
11	Taryn Todd	13:12	26:48	25 - 25	24 - 42	0	-18	1.89	0.90	4	6	8	30	3	5	6	16
21	Kevin Samuel	27:07	12:53	34 - 49	15 - 18	-15	-3	1.25	1.16	7	3	26	12	4	4	12	10
22	RJ Nembhard	31:23	08:37	32 - 56	17 - 11	-24	6	1.02	1.97	8	2	32	6	4	4	17	5
23	Jaedon LeDee	12:53	27:07	15 - 18	34 - 49	-3	-15	1.16	1.25	3	7	12	26	4	4	10	12
34	Kevin Easley	28:05	11:55	31 - 48	18 - 19	-17	-1	1.10	1.51	6	4	24	14	6	2	14	8

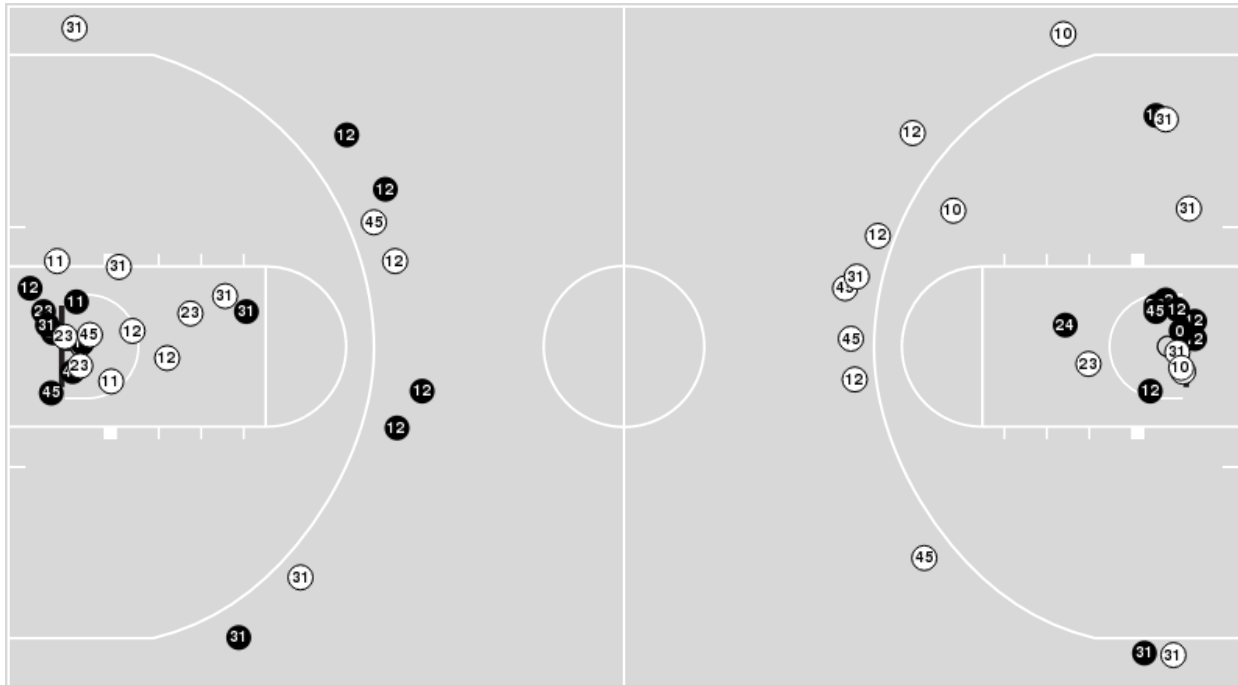




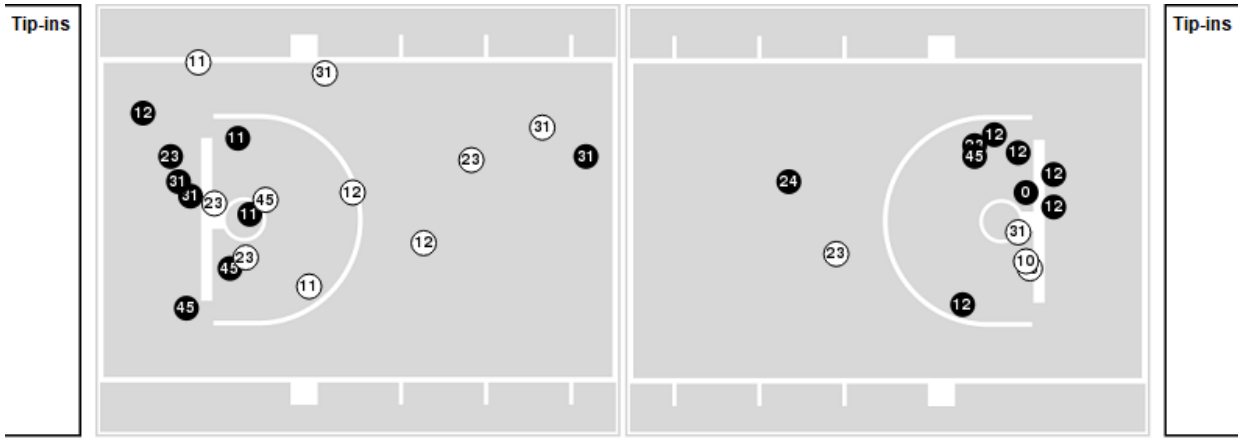
Players => AllFG Types=>AllResults=>All

**Baylor**

**All Field Goals**



**Blow Up Chart**



● Made    ○ Missed    N - Player Number

Baylor	M/A	%
Field Goals	25/55	45
2 Points	19/36	53
3 Points	6/19	32
Free Throws	11/19	58

Baylor	M/A	%
Points in the Paint	36 (18 / 31)	58
Fast Break Points	13 (7/9)	78
Second Chance Points	14 (8/11)	73
Effective FG%	51	



**Baylor at TCU**

01/09/21 Ed and Rae Schollmaier Arena, Fort Worth  
2020-21 Men's Basketball

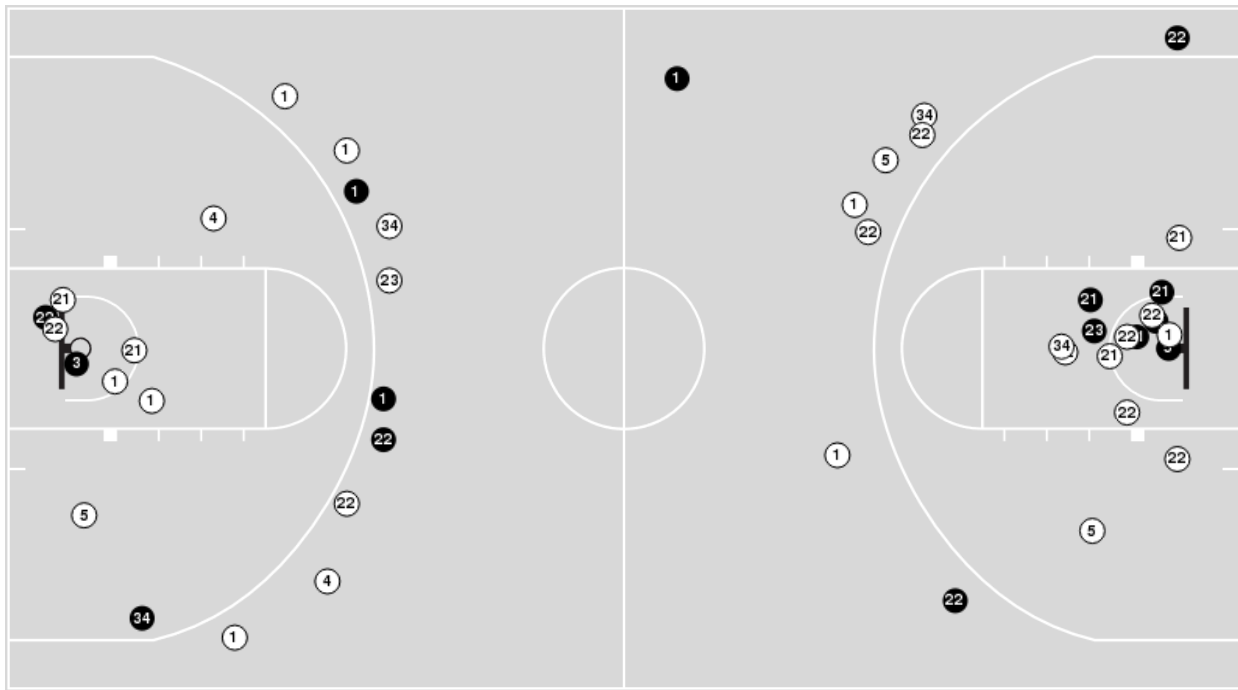
Game Time: 2:00 PM  
Game Duration: 2:03  
Attendance: 1,891

Officials: Gary Maxwell, Kelly Self, James Breeding

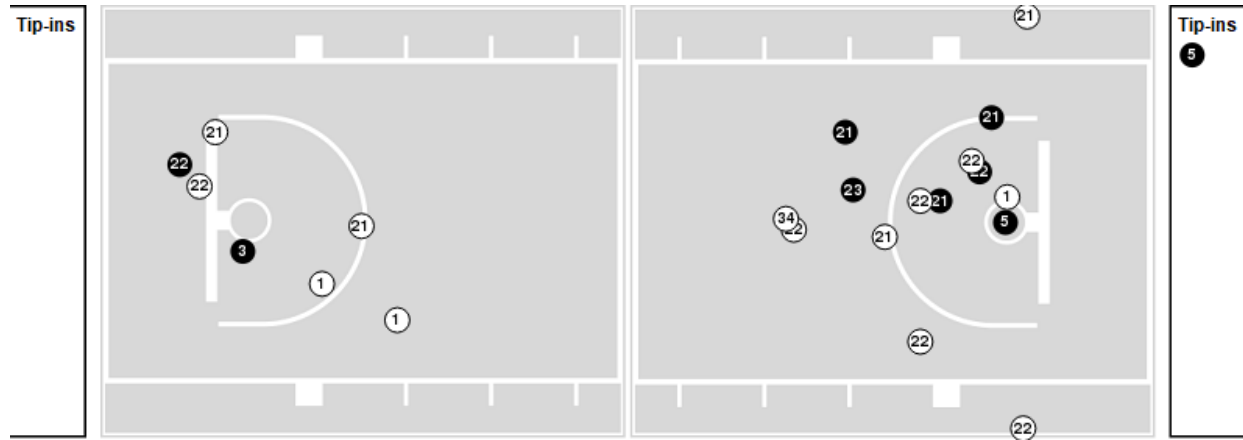
Players => 0, 1, 2, 3, 4, 5, 10, 11, 13, 15, 21, 22, 23, 30, 31, 34 FG Types=>All Results=>All

**TCU**

**All Field Goals**



**Blow Up Chart**



● Made ○ Missed N - Player Number

TCU	M/A	%
Field Goals	15/45	33
2 Points	9/26	35
3 Points	6/19	32
Free Throws	13/18	72

TCU	M/A	%
Points in the Paint	16 (8 / 20)	40
Fast Break Points	7 (5/6)	83
Second Chance Points	9 (5/11)	45
Effective FG%	40	



**Officials:** Gary Maxwell, Kelly Self, James Breeding

**Baylor**

Lineup	Quarter On	Time On	Quarter Off	Time Off	Time on Court	Score	Score Diff	Reb	Stl	Tov	Ass	PPP
0- Thamba F/ 11- Vital M/ 12- Butler J/ 31- Teague M/ 45- Mitchell D/	1	20:00	1	16:10	03:50	7-3	4	5	0	0	1	1.4344
11- Vital M/ 12- Butler J/ 23- Tchamwa Tchatchoua J/ 31- Teague M/ 45- Mitchell D/	1	16:10	1	13:56	02:14	0-2	-2	1	1	1	0	0.0000
10- Flagler A/ 12- Butler J/ 23- Tchamwa Tchatchoua J/ 24- Mayer M/ 31- Teague M/	1	13:56	1	12:55	01:01	2-3	-1	1	0	0	1	1.0000
0- Thamba F/ 10- Flagler A/ 12- Butler J/ 24- Mayer M/ 45- Mitchell D/	1	12:55	1	12:22	00:33	0-1	-1	0	0	0	0	0.0000
10- Flagler A/ 11- Vital M/ 12- Butler J/ 24- Mayer M/ 45- Mitchell D/	1	12:22	1	11:57	00:25	0-1	-1	0	0	0	0	0.0000
10- Flagler A/ 11- Vital M/ 24- Mayer M/ 31- Teague M/ 45- Mitchell D/	1	11:57	1	11:36	00:21	0-0	0	0	1	1	0	0.0000
11- Vital M/ 12- Butler J/ 24- Mayer M/ 31- Teague M/ 45- Mitchell D/	1	11:36	1	10:38	00:58	0-0	0	0	0	1	0	0.0000
11- Vital M/ 12- Butler J/ 23- Tchamwa Tchatchoua J/ 31- Teague M/ 45- Mitchell D/	1	10:38	1	07:26	03:12	6-6	0	2	1	1	2	1.2000
10- Flagler A/ 11- Vital M/ 12- Butler J/ 31- Teague M/ 45- Mitchell D/	1	07:26	1	06:23	01:03	0-3	-3	1	0	1	0	0.0000
0- Thamba F/ 10- Flagler A/ 12- Butler J/ 31- Teague M/ 45- Mitchell D/	1	06:23	1	04:58	01:25	2-0	2	1	1	0	0	1.0000
0- Thamba F/ 4- Cryer L/ 12- Butler J/ 31- Teague M/ 45- Mitchell D/	1	04:58	1	04:16	00:42	2-0	2	0	1	1	0	1.0000
0- Thamba F/ 4- Cryer L/ 12- Butler J/ 24- Mayer M/ 45- Mitchell D/	1	04:16	1	02:32	01:44	4-1	3	0	0	0	1	1.6393
4- Cryer L/ 12- Butler J/ 23- Tchamwa Tchatchoua J/ 24- Mayer M/ 45- Mitchell D/	1	02:32	1	00:51	01:40	4-3	1	1	0	0	1	1.3889
4- Cryer L/ 11- Vital M/ 12- Butler J/ 24- Mayer M/ 45- Mitchell D/	1	00:51	2	20:00	00:52	0-5	-5	0	0	1	0	0.0000
0- Thamba F/ 11- Vital M/ 12- Butler J/ 31- Teague M/ 45- Mitchell D/	2	20:00	2	16:24	03:36	11-4	7	3	2	0	2	1.9504
11- Vital M/ 12- Butler J/ 23- Tchamwa Tchatchoua J/ 31- Teague M/ 45- Mitchell D/	2	16:24	2	15:46	00:38	2-0	2	1	0	0	1	1.3889
11- Vital M/ 12- Butler J/ 23- Tchamwa Tchatchoua J/ 24- Mayer M/ 31- Teague M/	2	15:46	2	14:38	01:08	0-2	-2	2	0	2	0	0.0000
10- Flagler A/ 11- Vital M/ 23- Tchamwa Tchatchoua J/ 24- Mayer M/ 45- Mitchell D/	2	14:38	2	14:07	00:31	0-0	0	0	0	1	0	0.0000
0- Thamba F/ 10- Flagler A/ 11- Vital M/ 24- Mayer M/ 45- Mitchell D/	2	14:07	2	13:46	00:21	0-0	0	0	0	0	0	0.0000
0- Thamba F/ 10- Flagler A/ 11- Vital M/ 12- Butler J/ 45- Mitchell D/	2	13:46	2	11:42	02:04	3-2	1	3	0	0	1	0.9036
0- Thamba F/ 10- Flagler A/ 12- Butler J/ 24- Mayer M/ 45- Mitchell D/	2	11:42	2	11:09	00:33	0-3	-3	0	0	0	0	0.0000
0- Thamba F/ 12- Butler J/ 24- Mayer M/ 31- Teague M/ 45- Mitchell D/	2	11:09	2	09:45	01:24	4-3	1	0	0	0	1	2.0000
11- Vital M/ 12- Butler J/ 23- Tchamwa Tchatchoua J/ 31- Teague M/ 45- Mitchell D/	2	09:45	2	07:52	01:53	6-0	6	1	0	0	2	2.0833
12- Butler J/ 23- Tchamwa Tchatchoua J/ 24- Mayer M/ 31- Teague M/ 45- Mitchell D/	2	07:52	2	04:11	03:41	9-6	3	5	1	0	3	1.8443
11- Vital M/ 12- Butler J/ 23- Tchamwa Tchatchoua J/ 31- Teague M/ 45- Mitchell D/	2	04:11	2	02:24	01:47	0-1	-1	3	0	0	0	0.0000
10- Flagler A/ 12- Butler J/ 23- Tchamwa Tchatchoua J/ 31- Teague M/ 45- Mitchell D/	2	02:24	2	00:00	02:24	5-0	5	2	2	0	1	1.2500



Official Basketball Rotations Summary - Final  
**Baylor at TCU**  
 01/09/21 Ed and Rae Schollmaier Arena, Fort Worth  
 2020-21 Men's Basketball

Game Time: 2:00 PM  
 Game Duration: 2:03  
 Attendance: 1,891

Officials: Gary Maxwell, Kelly Self, James Breeding

TCU

Lineup	Quarter On	Time On	Quarter Off	Time Off	Time on Court	Score	Score Diff	Reb	Stl	Tov	Ass	PPP
1- Miles M/ 4- Fuller P/ 21- Samuel K/ 22- Nembhard R/ 34- Easley K/	1	20:00	1	16:10	03:50	3-7	-4	5	0	0	0	0.7732
1- Miles M/ 4- Fuller P/ 5- O'Bannon C/ 21- Samuel K/ 22- Nembhard R/	1	16:10	1	13:56	02:14	2-0	2	3	1	2	1	0.5000
3- Farabello F/ 5- O'Bannon C/ 11- Todd T/ 22- Nembhard R/ 23- LeDee J/	1	13:56	1	12:55	01:01	3-2	1	2	0	0	1	1.5000
1- Miles M/ 3- Farabello F/ 5- O'Bannon C/ 11- Todd T/ 23- LeDee J/	1	12:55	1	11:36	01:19	2-0	2	2	0	2	0	0.6944
1- Miles M/ 5- O'Bannon C/ 11- Todd T/ 22- Nembhard R/ 23- LeDee J/	1	11:36	1	11:11	00:25	0-0	0	0	0	1	0	0.0000
1- Miles M/ 3- Farabello F/ 5- O'Bannon C/ 11- Todd T/ 23- LeDee J/	1	11:11	1	10:42	00:29	0-0	0	0	1	1	0	0.0000
1- Miles M/ 3- Farabello F/ 11- Todd T/ 21- Samuel K/ 34- Easley K/	1	10:42	1	08:57	01:45	5-4	1	0	0	0	1	2.5000
1- Miles M/ 3- Farabello F/ 4- Fuller P/ 21- Samuel K/ 34- Easley K/	1	08:57	1	06:23	02:34	4-2	2	3	1	1	1	0.8197
1- Miles M/ 4- Fuller P/ 21- Samuel K/ 22- Nembhard R/ 34- Easley K/	1	06:23	1	04:58	01:25	0-2	-2	2	0	2	0	0.0000
1- Miles M/ 4- Fuller P/ 11- Todd T/ 21- Samuel K/ 34- Easley K/	1	04:58	1	04:16	00:42	0-2	-2	0	1	1	0	0.0000
1- Miles M/ 4- Fuller P/ 22- Nembhard R/ 23- LeDee J/ 34- Easley K/	1	04:16	1	03:42	00:34	0-2	-2	0	0	1	0	0.0000
1- Miles M/ 4- Fuller P/ 5- O'Bannon C/ 22- Nembhard R/ 23- LeDee J/	1	03:42	1	02:32	01:10	1-2	-1	3	0	1	0	0.6944
1- Miles M/ 3- Farabello F/ 4- Fuller P/ 23- LeDee J/ 34- Easley K/	1	02:32	1	02:07	00:25	1-1	0	0	0	0	0	2.2727
1- Miles M/ 11- Todd T/ 22- Nembhard R/ 23- LeDee J/ 34- Easley K/	1	02:07	1	01:46	00:21	1-1	0	0	0	0	0	2.2727
1- Miles M/ 4- Fuller P/ 11- Todd T/ 23- LeDee J/ 34- Easley K/	1	01:46	1	00:51	00:54	1-2	-1	1	0	0	0	0.6944
1- Miles M/ 11- Todd T/ 22- Nembhard R/ 23- LeDee J/ 34- Easley K/	1	00:51	1	00:29	00:23	1-0	1	0	0	0	0	2.2727
1- Miles M/ 4- Fuller P/ 11- Todd T/ 23- LeDee J/ 34- Easley K/	1	00:29	1	00:29	00:00	1-0	1	0	0	0	0	2.2727
1- Miles M/ 4- Fuller P/ 11- Todd T/ 21- Samuel K/ 34- Easley K/	1	00:29	2	20:00	00:29	3-0	3	0	1	0	0	3.0000
1- Miles M/ 4- Fuller P/ 21- Samuel K/ 22- Nembhard R/ 34- Easley K/	2	20:00	2	18:45	01:15	0-3	-3	3	0	2	0	0.0000
1- Miles M/ 11- Todd T/ 21- Samuel K/ 22- Nembhard R/ 34- Easley K/	2	18:45	2	17:49	00:56	0-3	-3	0	0	0	0	0.0000
1- Miles M/ 5- O'Bannon C/ 11- Todd T/ 21- Samuel K/ 22- Nembhard R/	2	17:49	2	16:24	01:25	4-5	-1	0	0	0	2	2.0000
1- Miles M/ 3- Farabello F/ 5- O'Bannon C/ 21- Samuel K/ 22- Nembhard R/	2	16:24	2	15:46	00:38	0-2	-2	1	0	0	0	0.0000
1- Miles M/ 3- Farabello F/ 22- Nembhard R/ 23- LeDee J/ 34- Easley K/	2	15:46	2	12:40	03:06	4-3	1	1	3	1	2	0.6667
1- Miles M/ 4- Fuller P/ 22- Nembhard R/ 23- LeDee J/ 34- Easley K/	2	12:40	2	12:18	00:22	0-0	0	1	0	0	0	0.0000
1- Miles M/ 4- Fuller P/ 21- Samuel K/ 22- Nembhard R/ 34- Easley K/	2	12:18	2	08:16	04:02	6-9	-3	3	0	3	2	0.8571
1- Miles M/ 11- Todd T/ 21- Samuel K/ 22- Nembhard R/ 34- Easley K/	2	08:16	2	07:52	00:24	0-1	-1	1	0	0	0	0.0000
1- Miles M/ 5- O'Bannon C/ 11- Todd T/ 21- Samuel K/ 22- Nembhard R/	2	07:52	2	05:13	02:39	4-5	-1	2	0	1	0	1.0309
1- Miles M/ 4- Fuller P/ 5- O'Bannon C/ 21- Samuel K/ 22- Nembhard R/	2	05:13	2	04:38	00:35	2-3	-1	1	0	0	0	2.0000
1- Miles M/ 4- Fuller P/ 21- Samuel K/ 22- Nembhard R/ 34- Easley K/	2	04:38	2	02:24	02:14	1-1	0	2	0	0	0	0.3012
1- Miles M/ 4- Fuller P/ 22- Nembhard R/ 23- LeDee J/ 34- Easley K/	2	02:24	2	00:00	02:24	0-5	-5	2	0	3	0	0.0000



**Officials:** Gary Maxwell, Kelly Self, James Breeding

**Baylor**

Lineup	Time	Score	Score Diff	Pts/Min	Reb	Stl	Tov	Ass	PPP
11- Vital M/ 12- Butler J/ 23- Tchamwa Tchatchoua J/ 31- Teague M/ 45- Mitchell D/	09:44	14-9	5	1.4384	8	2	2	5	0.9138
0- Thamba F/ 11- Vital M/ 12- Butler J/ 31- Teague M/ 45- Mitchell D/	07:26	18-7	11	2.4215	8	2	0	3	1.7110
12- Butler J/ 23- Tchamwa Tchatchoua J/ 24- Mayer M/ 31- Teague M/ 45- Mitchell D/	03:41	9-6	3	2.4434	5	1	0	3	1.8443
10- Flagler A/ 12- Butler J/ 23- Tchamwa Tchatchoua J/ 31- Teague M/ 45- Mitchell D/	02:24	5-0	5	2.0833	2	2	0	1	1.2500
0- Thamba F/ 10- Flagler A/ 11- Vital M/ 12- Butler J/ 45- Mitchell D/	02:04	3-2	1	1.4516	3	0	0	1	0.9036
0- Thamba F/ 4- Cryer L/ 12- Butler J/ 24- Mayer M/ 45- Mitchell D/	01:44	4-1	3	2.3077	0	0	0	1	1.6393
4- Cryer L/ 12- Butler J/ 23- Tchamwa Tchatchoua J/ 24- Mayer M/ 45- Mitchell D/	01:40	4-3	1	2.4000	1	0	0	1	1.3889
0- Thamba F/ 10- Flagler A/ 12- Butler J/ 31- Teague M/ 45- Mitchell D/	01:25	2-0	2	1.4118	1	1	0	0	1.0000
0- Thamba F/ 12- Butler J/ 24- Mayer M/ 31- Teague M/ 45- Mitchell D/	01:24	4-3	1	2.8571	0	0	0	1	2.0000
11- Vital M/ 12- Butler J/ 23- Tchamwa Tchatchoua J/ 24- Mayer M/ 31- Teague M/	01:08	0-2	-2	0.0000	2	0	2	0	0.0000
0- Thamba F/ 10- Flagler A/ 12- Butler J/ 24- Mayer M/ 45- Mitchell D/	01:06	0-4	-4	0.0000	0	0	0	0	0.0000
10- Flagler A/ 11- Vital M/ 12- Butler J/ 31- Teague M/ 45- Mitchell D/	01:03	0-3	-3	0.0000	1	0	1	0	0.0000
10- Flagler A/ 12- Butler J/ 23- Tchamwa Tchatchoua J/ 24- Mayer M/ 31- Teague M/	01:01	2-3	-1	1.9672	1	0	0	1	1.0000
11- Vital M/ 12- Butler J/ 24- Mayer M/ 31- Teague M/ 45- Mitchell D/	00:58	0-0	0	0.0000	0	0	1	0	0.0000
4- Cryer L/ 11- Vital M/ 12- Butler J/ 24- Mayer M/ 45- Mitchell D/	00:52	0-5	-5	0.0000	0	0	1	0	0.0000
0- Thamba F/ 4- Cryer L/ 12- Butler J/ 31- Teague M/ 45- Mitchell D/	00:42	2-0	2	2.8571	0	1	1	0	1.0000
10- Flagler A/ 11- Vital M/ 23- Tchamwa Tchatchoua J/ 24- Mayer M/ 45- Mitchell D/	00:31	0-0	0	0.0000	0	0	1	0	0.0000
10- Flagler A/ 11- Vital M/ 12- Butler J/ 24- Mayer M/ 45- Mitchell D/	00:25	0-1	-1	0.0000	0	0	0	0	0.0000
10- Flagler A/ 11- Vital M/ 24- Mayer M/ 31- Teague M/ 45- Mitchell D/	00:21	0-0	0	0.0000	0	1	1	0	0.0000
0- Thamba F/ 10- Flagler A/ 11- Vital M/ 24- Mayer M/ 45- Mitchell D/	00:21	0-0	0	0.0000	0	0	0	0	0.0000



Official Basketball Line Up Analysis - Final  
**Baylor at TCU**  
 01/09/21 Ed and Rae Schollmaier Arena, Fort Worth  
 2020-21 Men's Basketball

**Game Time:** 2:00 PM  
**Game Duration:** 2:03  
**Attendance:** 1,891

**Officials:** Gary Maxwell, Kelly Self, James Breeding

**TCU**

Lineup	Time	Score	Score Diff	Pts/Min	Reb	Stl	Tov	Ass	PPP
1- Miles M/ 4- Fuller P/ 21- Samuel K/ 22- Nembhard R/ 34- Easley K/	12:46	10-22	-12	0.7833	15	0	7	2	0.5365
1- Miles M/ 5- O'Bannon C/ 11- Todd T/ 21- Samuel K/ 22- Nembhard R/	04:04	8-10	-2	1.9672	2	0	1	2	1.3605
1- Miles M/ 4- Fuller P/ 22- Nembhard R/ 23- LeDee J/ 34- Easley K/	03:20	0-7	-7	0.0000	3	0	4	0	0.0000
1- Miles M/ 3- Farabello F/ 22- Nembhard R/ 23- LeDee J/ 34- Easley K/	03:06	4-3	1	1.2903	1	3	1	2	0.6667
1- Miles M/ 4- Fuller P/ 5- O'Bannon C/ 21- Samuel K/ 22- Nembhard R/	02:49	4-3	1	1.4201	4	1	2	1	0.8000
1- Miles M/ 3- Farabello F/ 4- Fuller P/ 21- Samuel K/ 34- Easley K/	02:34	4-2	2	1.5584	3	1	1	1	0.8197
1- Miles M/ 3- Farabello F/ 5- O'Bannon C/ 11- Todd T/ 23- LeDee J/	01:48	2-0	2	1.1111	2	1	3	0	0.5155
1- Miles M/ 3- Farabello F/ 11- Todd T/ 21- Samuel K/ 34- Easley K/	01:45	5-4	1	2.8571	0	0	0	1	2.5000
1- Miles M/ 11- Todd T/ 21- Samuel K/ 22- Nembhard R/ 34- Easley K/	01:20	0-4	-4	0.0000	1	0	0	0	0.0000
1- Miles M/ 4- Fuller P/ 11- Todd T/ 21- Samuel K/ 34- Easley K/	01:11	3-2	1	2.5352	0	2	1	0	1.5000
1- Miles M/ 4- Fuller P/ 5- O'Bannon C/ 22- Nembhard R/ 23- LeDee J/	01:10	1-2	-1	0.8571	3	0	1	0	0.6944
3- Farabello F/ 5- O'Bannon C/ 11- Todd T/ 22- Nembhard R/ 23- LeDee J/	01:01	3-2	1	2.9508	2	0	0	1	1.5000
1- Miles M/ 4- Fuller P/ 11- Todd T/ 23- LeDee J/ 34- Easley K/	00:54	2-2	0	2.2222	1	0	0	0	1.0638
1- Miles M/ 11- Todd T/ 22- Nembhard R/ 23- LeDee J/ 34- Easley K/	00:44	2-1	1	2.7273	0	0	0	0	2.2727
1- Miles M/ 3- Farabello F/ 5- O'Bannon C/ 21- Samuel K/ 22- Nembhard R/	00:38	0-2	-2	0.0000	1	0	0	0	0.0000
1- Miles M/ 5- O'Bannon C/ 11- Todd T/ 22- Nembhard R/ 23- LeDee J/	00:25	0-0	0	0.0000	0	0	1	0	0.0000
1- Miles M/ 3- Farabello F/ 4- Fuller P/ 23- LeDee J/ 34- Easley K/	00:25	1-1	0	2.4000	0	0	0	0	2.2727